

Figure S1 Hazard-sensitive communities by quintiles in New York City.

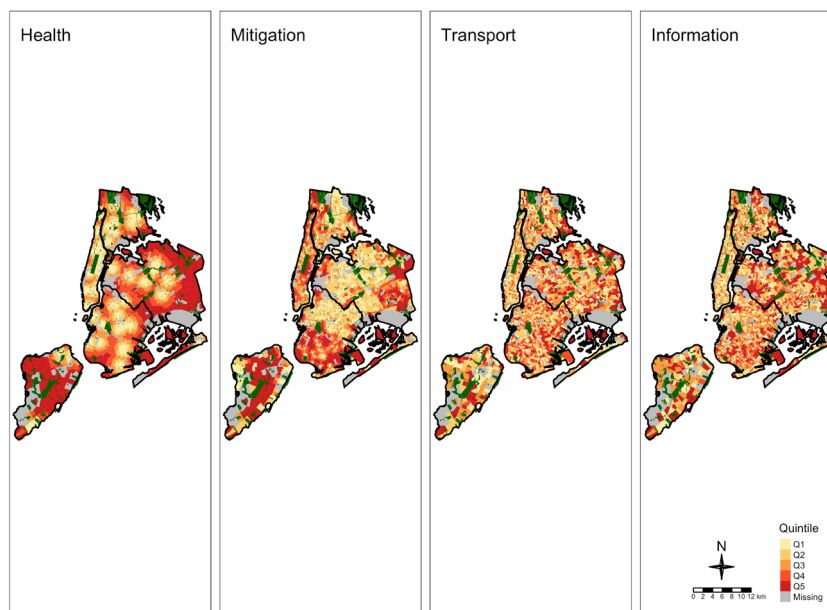


Figure S2 Adaptive capacity quintiles for different types of community resources in New York City.

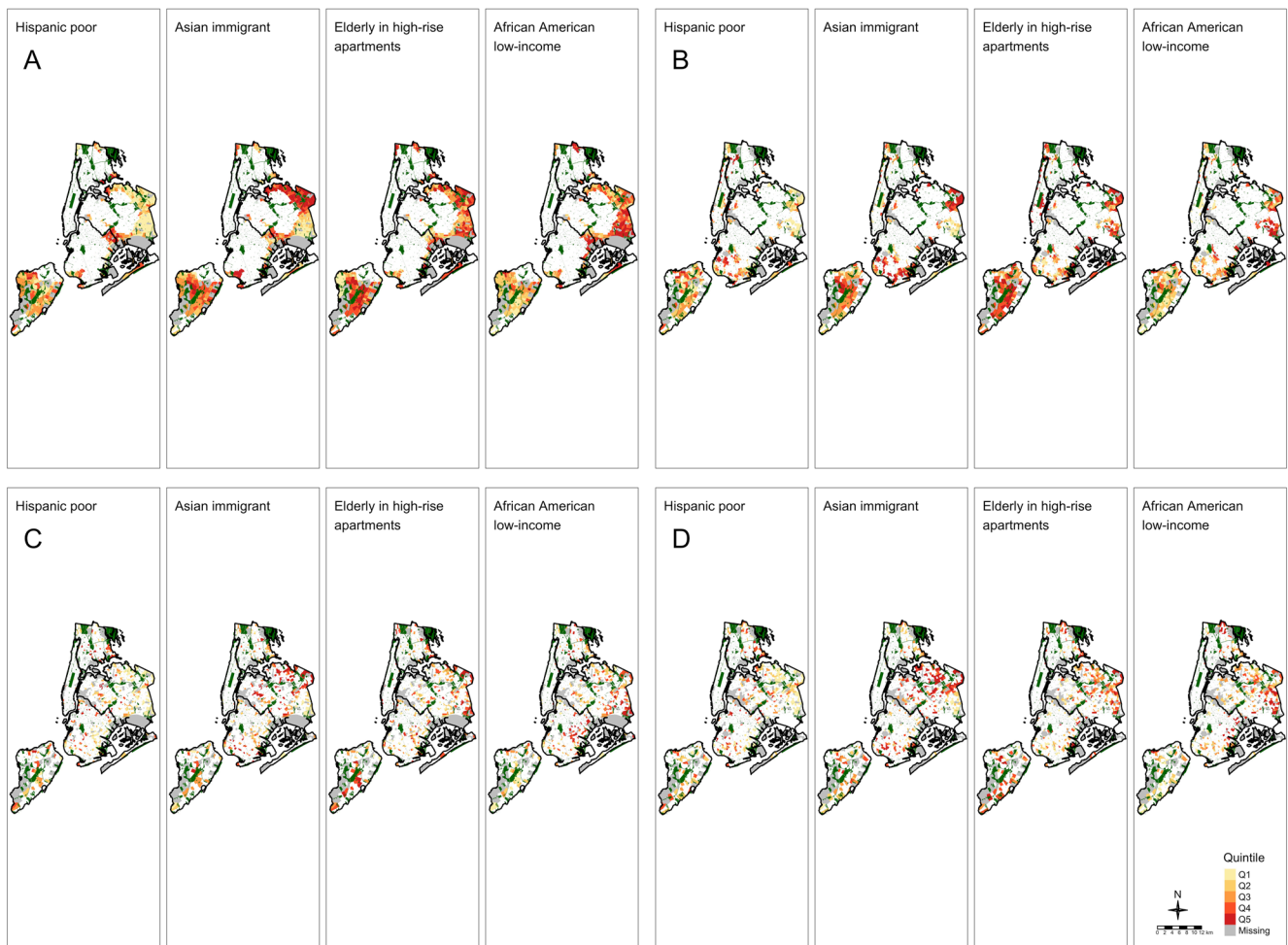


Figure S3 Hazard-sensitive populations by quintiles of sensitivity and only for the lowest adaptive capacity for community resources in New York City. (A) Lowest adaptive capacity in health. (B) Lowest adaptive capacity for mitigation actions. (C) Lowest adaptive capacity for transportation. (D) Lowest adaptive capacity for information.

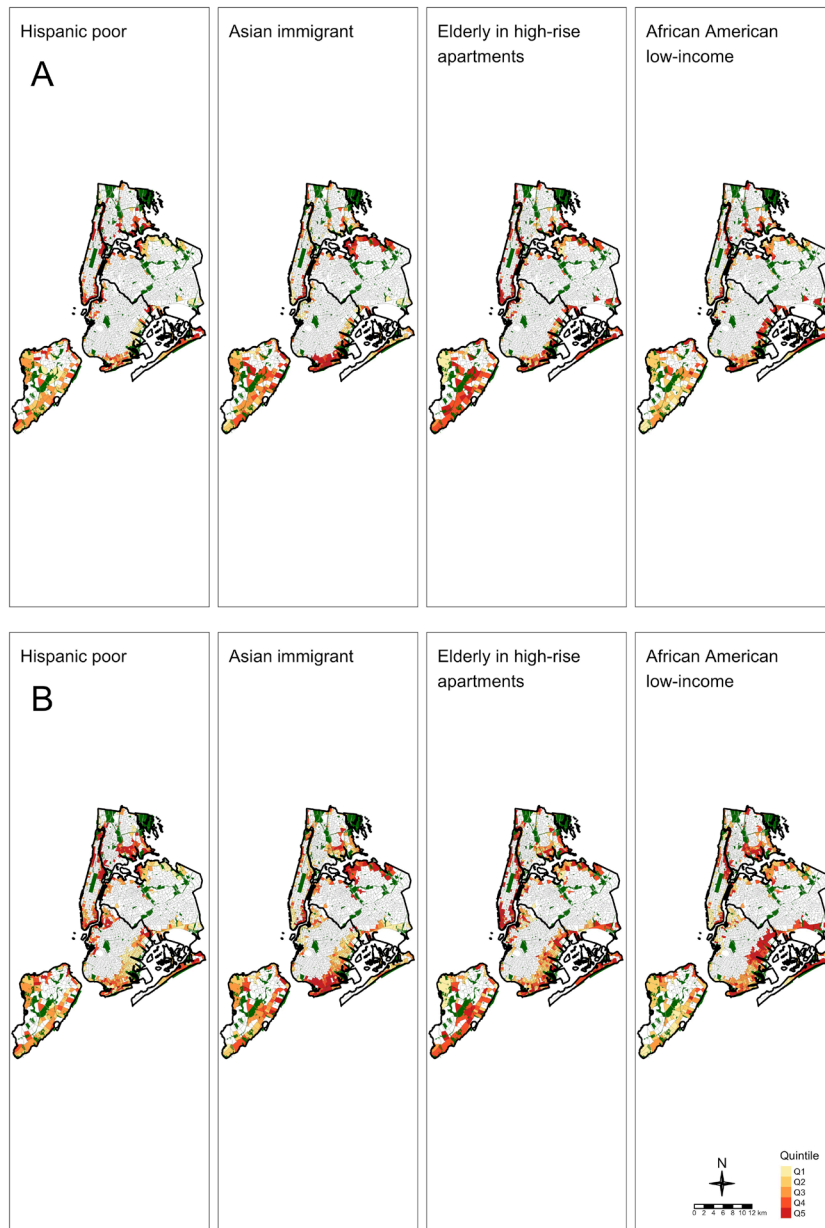


Figure S4 Hazard-sensitive populations by quintiles that are exposed to moderate (A) and extreme (B) coastal flooding in New York City.

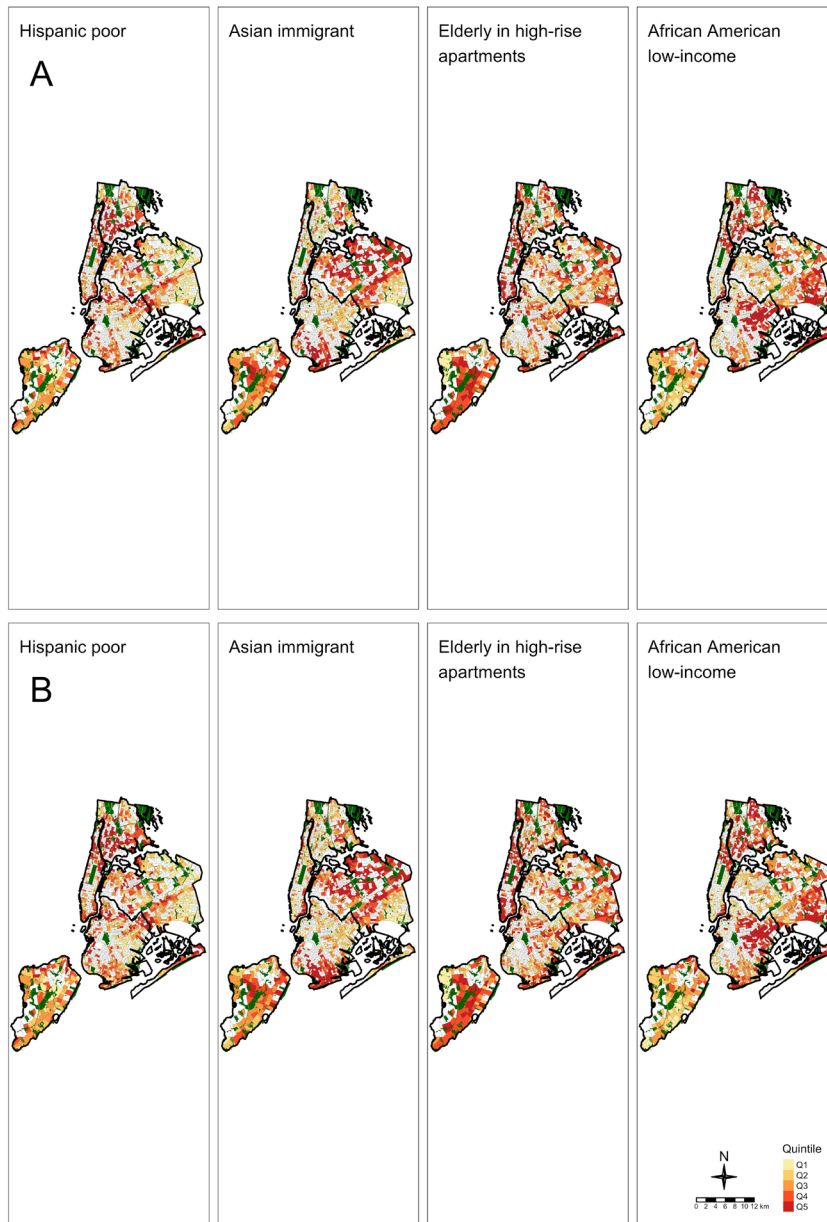


Figure S5 Hazard-sensitive populations by quintiles, that are exposed to moderate (A) and extreme (B) pluvial flooding in New York City.

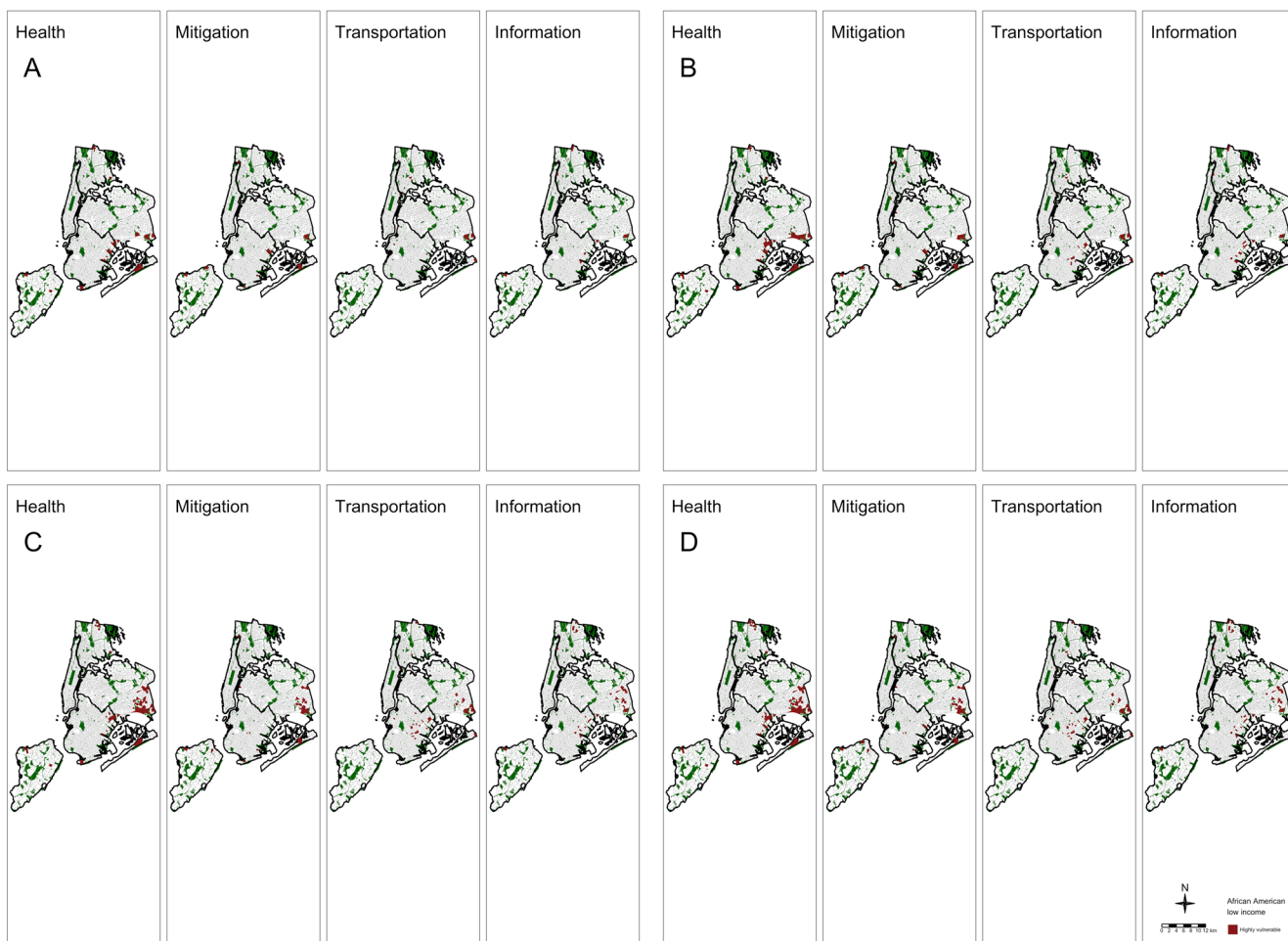


Figure S6 Areas of highly flood-vulnerable African American populations. Dark red areas designate locations of African American populations that are highly sensitive and have low adaptive capacity for community resources. (A) Moderate coastal flooding. (B) Extreme coastal flooding. (C) Moderate pluvial flooding. (D) Extreme pluvial flooding.

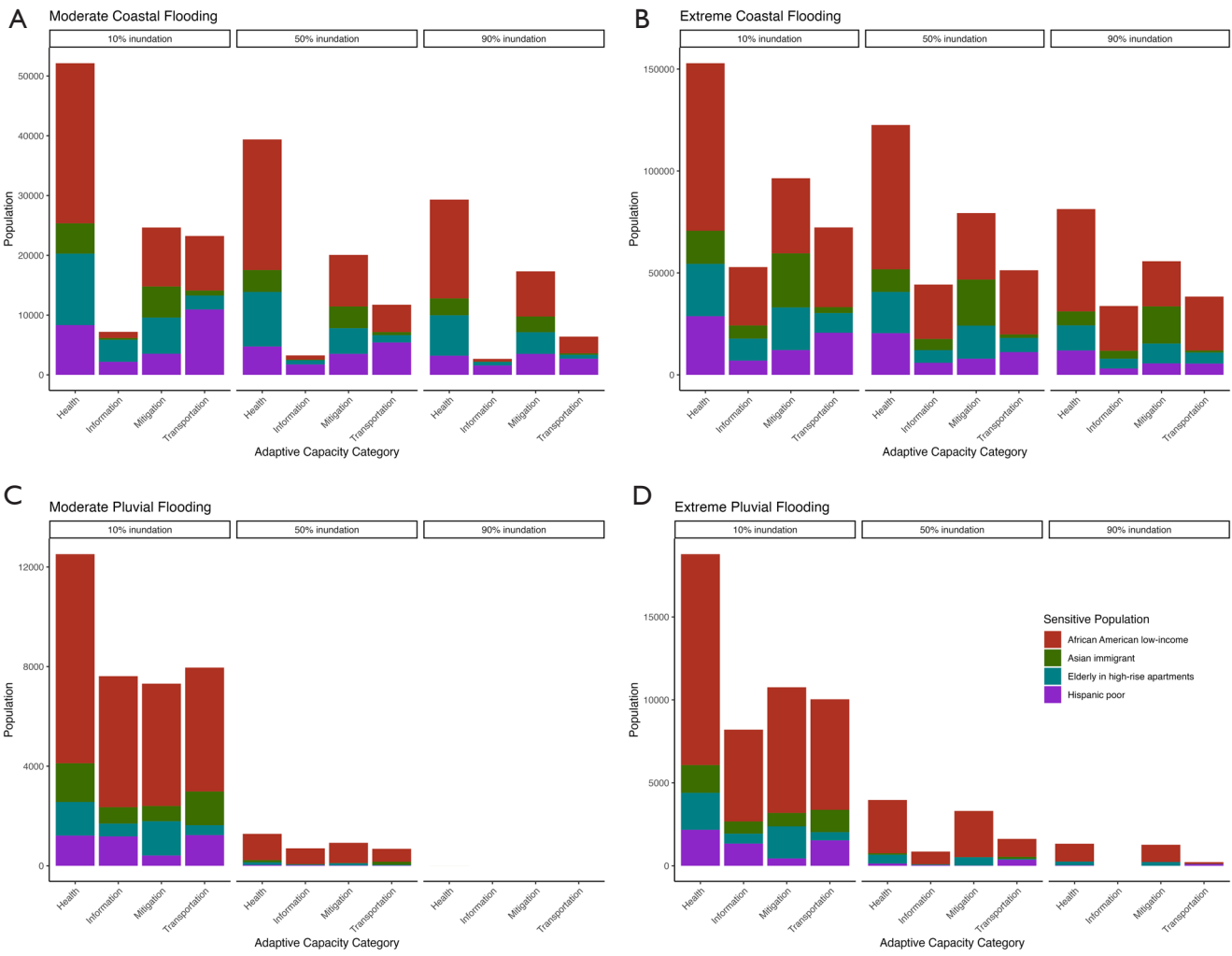


Figure S7 Sensitive populations in areas of high vulnerability to coastal and pluvial flooding in New York City.