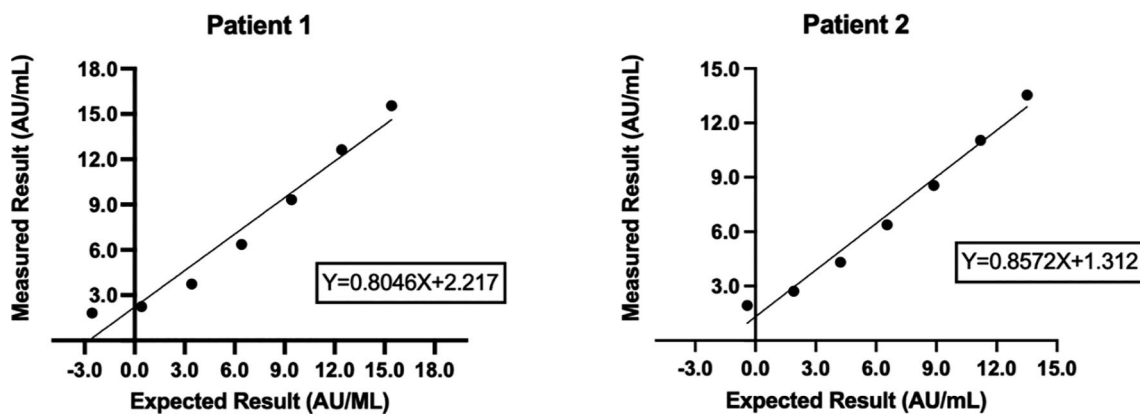


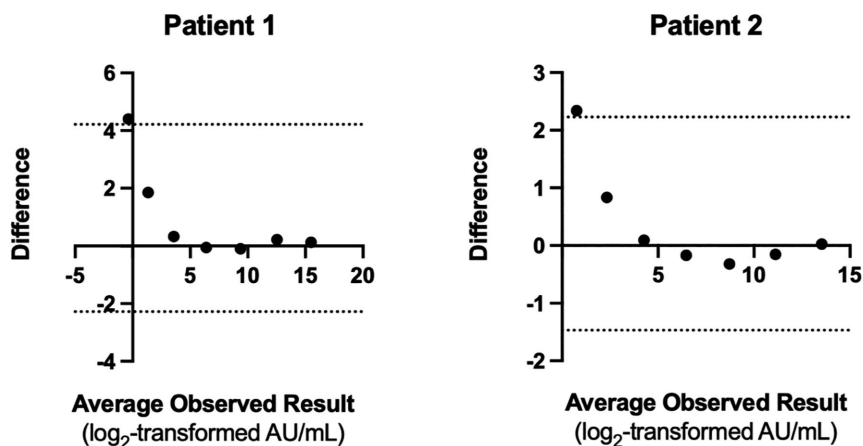
**Table S1** SARS-CoV-2 anti-Spike IgM and anti-S IgG II precision

Assay	QC <sup>a</sup> Level	Intra-Day CV <sup>b</sup> (%)	Average Threshold	Inter-Day CV (%)	Average Threshold
Anti-Spike IgM (S/CO) <sup>c</sup>	Negative QC	16.5	0.02	21.3	0.01
	Positive QC	2.2	2.7	1.9	1.6
Anti-Spike IgG II (AU/mL) <sup>d</sup>	Negative QC	23.9	3.0	16.6	3.0
	Low Positive QC	3.3	169.6	2.4	170.5
	High Positive QC	2.9	644.0	2.4	649.3

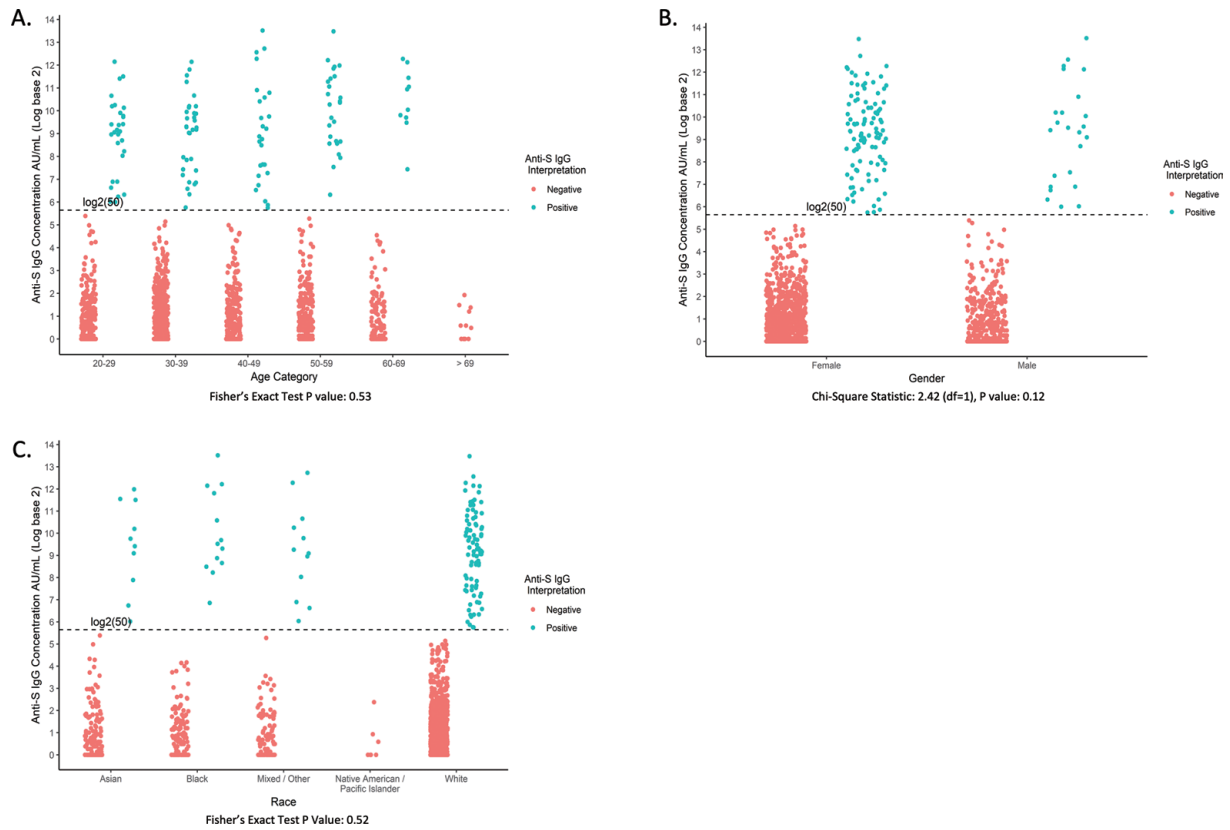
<sup>a</sup>, quality control as supplied by assay manufacturer; <sup>b</sup>, CV, coefficient of variance; <sup>c</sup>, S/CO, signal to cut-off ratio; <sup>d</sup>, AU/mL, arbitrary units per milliliter.



**Figure S1** Linearity of the Abbott SARS-CoV-2 anti-Spike IgG II assay. Axes log<sub>2</sub>-transformed for visualization. (A) a sample above the analytic measuring range, diluted out to the extended measuring interval, untransformed r<sup>2</sup>, 0.99 and (B) a sample resulting high relative to other serum samples in the cohort, untransformed r<sup>2</sup>, 0.99.



**Figure S2** Comparison of expected vs. measured SARS-CoV-2 anti-Spike IgG concentrations using two participant specimens. Concentration axis log<sub>2</sub>-transformed for visualization. (A) a sample above the analytic measuring range, diluted out to the extended measuring interval, (B) a sample resulting high relative to other serum samples in the cohort. Horizontal dashed lines represent 95% CI and vertical dashed line represents anti-S IgG II positivity threshold.

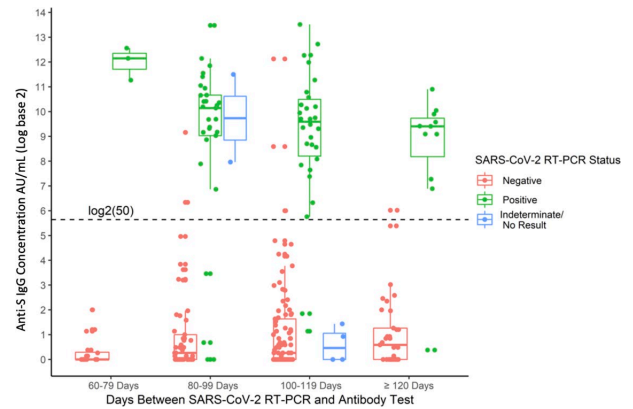


**Figure S3** Anti-S IgG serum concentrations by demographics. (A) Age, (B) Gender, (C) Race.

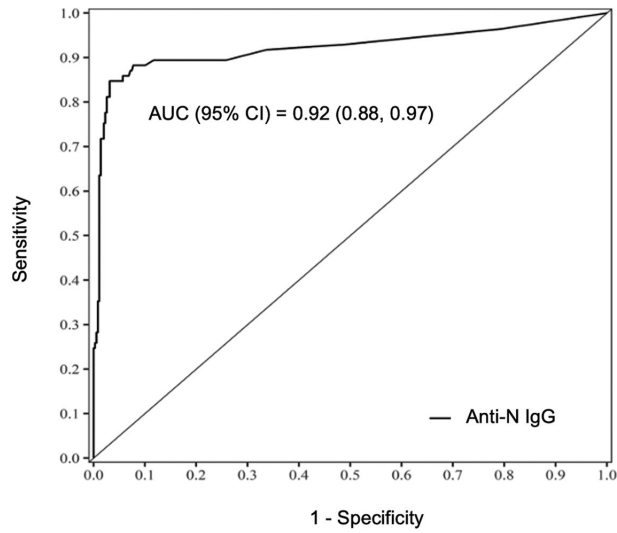
**Table S2** SARS-CoV-2 anti-S IgM by SARS-CoV-2 RT-PCR results

SARS-CoV-2 anti-S IgM result	Total	SARS-CoV-2 RT-PCR result			
		Positive	Negative	IND*	Not tested
Positive	76	47	7	2	20
Negative	1,667	38	343	4	1,282

\*, Indeterminate.



**Figure S4** Anti-S IgG distribution by days between SARS-CoV-2 RT-PCR test and serology date (Fisher's Exact Test P value, 0.22).



**Figure S5** ROC analysis of SARS-CoV-2 IgG.

**Table S3** SARS-CoV-2 IgG II and SARS-CoV-2 IgG breakdown by SARS-CoV-2 RT-PCR status

Assay Reactivity	SARS-CoV-2 RT-PCR Status				
	Total	Positive	Indeterminate	Negative	No RT-PCR
SARS-Cov-2 IgG OT+ and SARS-Cov-2 IgG II+	109	72	2	9	26
SARS-Cov-2 IgG OT+ and SARS-Cov-2 IgG II-	21	0	0	3	18
SARS-Cov-2 IgG OT- and SARS-Cov-2 IgG II-	1,596	10	4	338	1,244
SARS-Cov-2 IgG OT- and SARS-Cov-2 IgG II+	17	3	0	0	14

OT, optimized threshold.