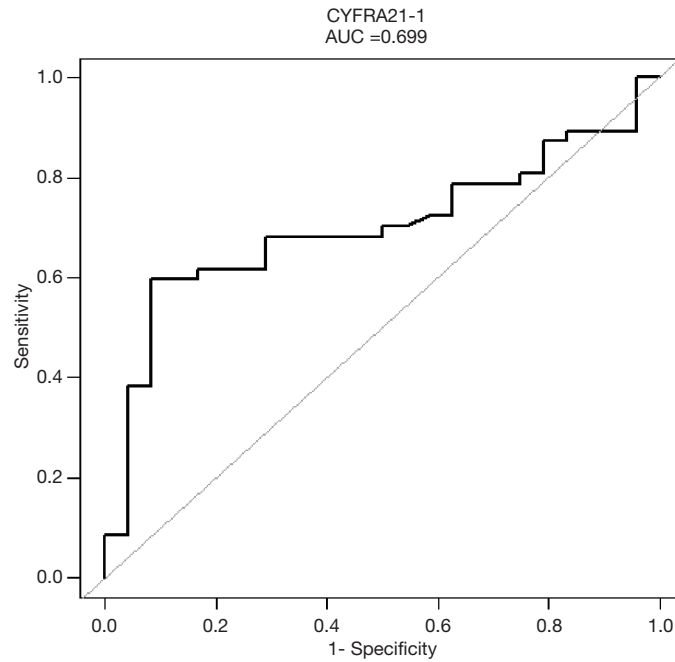


CYFRA21-1 and positive rate of gene mutations dose-response relationship in blood sample. Adjusted for age, gender, hemoglobin, platelet, and leukocyte levels.



ROC curve of the relationship between CYFRA21-1 and positive rate of gene mutations in blood sample group. AUC of CYFRA21-1 was 0.6990 (95% CI: 0.5748-0.8232). AUC: area under the curve; ROC: receiver operating characteristic

Patient characteristics

Gene mutation	Blood sample			Tissue sample		
	No	Yes	P-value	No	Yes	P-value
NO.	24	48		10	38	
Age	65.5±8.7	62.6±12.4	0.318	60.7± 18.8	65.7±11.0	0.281
NSE (U/mL)	15.4±7.8	22.2±12.9	0.002	16.7±4.4	20.2±12.0	0.819
CEA	57.3±154.2	77.9±202.9	0.905	11.3±15.0	43.7±99.1	0.195
CYFRA21-1	4.9±4.1	12.3±25.2	0.006	8.6±10.4	9.7±15.0	0.534
Gender			0.864			0.488
Female	9 (37.5%)	19 (39.6%)		3 (30.0%)	17 (44.7%)	
Male	15 (62.5%)	29 (60.4%)		7 (70.0%)	21 (55.3%)	

Patient characteristics of 10-gene panel

Gene mutation	Blood sample			Tissue sample		
	No	Yes	P-value	No	Yes	P-value
NO.	18	30		9	24	
Age	62.9±8.2	64.3±13.5	0.695	58.4±18.5	65.9±11.6	0.173
NSE (U/mL)	16.2±8.4	24.2±14.4	0.002	16.3±4.5	17.7±7.7	1.000
CEA	32.8±45.2	117.0±249.0	0.250	12.1±15.6	44.8±118.9	0.467
CYFRA21-1	5.1±4.7	8.2±5.9	0.069	9.0±10.9	6.0±7.1	0.275
Gender			0.762			0.698
Female	8 (44.4%)	11 (36.7%)		3 (33.3%)	11 (45.8%)	
Male	10 (55.6%)	19 (63.3%)		6 (66.7%)	13 (54.2%)	