

**Table S1** Baseline characteristics according to device success

	Device success No= 29	Device success Yes=364	p-value
Clinical characteristics			
Age (years)	80.7±5.1	81.1±6.1	0.752
Female gender	16 (55.52)	194 (53.3)	0.845
Body mass index (kg/m <sup>2</sup> )	24.9±5.0	25.6±5.0	0.097
Logistic EuroScore I	14.3±10.9	17.3±12.8	0.224
NYHA III/IV	16 (55.2)	222 (61.0)	0.537
Chronic obstructive pulmonary disease	2 (6.9)	48 (13.2)	0.560
Diabetes mellitus	6 (20.7)	88 (24.2)	0.672
Glomerular filtration rate (ml/min)	52.5±19.1	53.0±18.9	0.872
Peripheral vascular disease	2 (6.9)	47 (12.9)	0.558
Previous stroke major/minor	4 (13.8)	51 (14.0)	0.999
Coronary artery disease	23 (79.3)	313 (86.0)	0.407
Previous coronary artery bypass grafting	3 (10.3)	42 (11.5)	0.999
Echocardiography			
Left ventricular ejection fraction <35%	0 (0)	24 (6.6)	0.240
Pulmonary hypertension <sup>a</sup>	1 (3.4)	35 (9.6)	0.499
ECG			
Atrial fibrillation	7 (24.1)	144 (39.6)	0.100
Right bundle branch block	5 (17.2)	30 (8.2)	0.163
Left bundle branch block	2 (6.9)	25 (6.9)	0.999
Previous pacemaker	0 (0)	39 (10.7)	0.097
Multislice-computer tomography data <sup>b</sup>			
Aortic annular area (cm <sup>2</sup> )	4.3±0.6	4.2±0.7	0.742
Severely calcified	10 (34.5)	60 (16.6)	0.016
Procedural characteristics			
Conscious sedation	8 (27.6)	187 (51.4)	0.014

Data are mean ± standard deviation, median [interquartile range] or n (%).

Abbreviations: NYHA, New York Heart Association functional class.

<sup>a</sup> pulmonary arterial pressure on echocardiography ≥ 60 mmHg

<sup>b</sup> for patients with available MSCT (391/393).

**Table S2** Baseline characteristics according to the composite early safety endpoint at 30 days

	Early safety endpoint		p-value
	at 30 days		
	No= 321	Yes=74	
<b>Clinical characteristics</b>			
Age (years)	80.9±6.1	81.6±5.7	0.392
Female gender	162 (50.5)	49 (66.2)	0.014
Body mass index (kg/m <sup>2</sup> )	26.4±4.5	26.3±5.4	0.746
Logistic EuroScore I	16.6±12.5	19.0±13.3	0.137
NYHA III/IV	192 (59.8)	47 (63.5)	0.557
Chronic obstructive pulmonary disease	42 (13.1)	9 (12.2)	0.831
Diabetes mellitus	77 (24.0)	17 (23.0)	0.853
Glomerular filtration rate (ml/min)	54.5±19.9	47.9±14.9	0.007
Peripheral vascular disease	43 (13.4)	6 (8.1)	0.214
Previous stroke major/minor	46 (14.3)	10 (13.5)	0.856
Coronary artery disease	275 (85.7)	63 (85.1)	0.906
Previous coronary artery bypass grafting	38 (11.8)	8 (10.8)	0.804
<b>Echocardiography</b>			
Left ventricular ejection fraction <35%	17 (5.3)	7 (9.5)	0.240
Pulmonary hypertension <sup>a</sup>	26 (8.1)	10 (13.5)	0.145
<b>ECG</b>			
Atrial fibrillation	118 (36.8)	33 (44.6)	0.211
Right bundle branch block	18 (5.6)	10 (13.5)	0.017
Left bundle branch block	23 (7.2)	12 (16.2)	0.014
Previous pacemaker	33 (10.3)	7 (9.5)	0.833
<b>Multislice-computer tomography data<sup>b</sup></b>			
Aortic annular area (cm <sup>2</sup> )	4.2±0.7	4.2±0.6	0.796
Severely calcified	57 (17.9)	13 (17.6)	0.942
<b>Procedural characteristics</b>			
Conscious sedation	164 (51.1)	32 (43.2)	0.224

Data are mean ± standard deviation, median [interquartile range] or n (%).

Abbreviations: NYHA, New York Heart Association functional class.

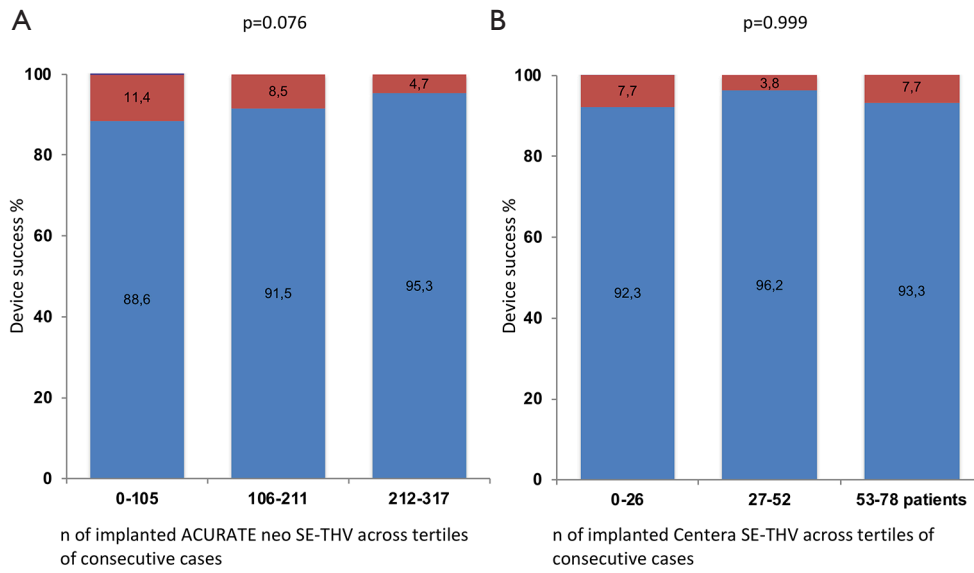
<sup>a</sup> pulmonary arterial pressure on echocardiography ≥ 60 mmHg

<sup>b</sup> for patients with available MSCT (392/395).

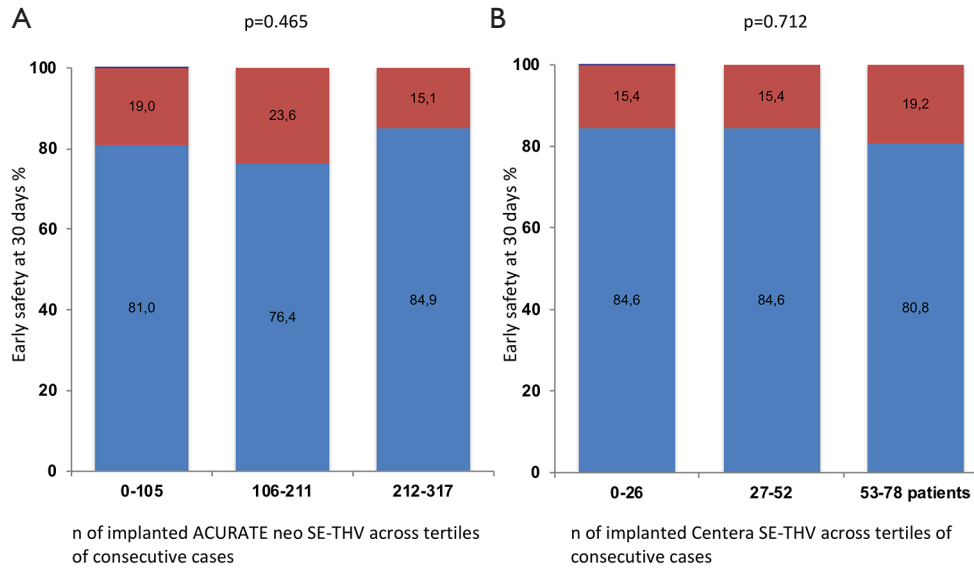
**Table S3** Multivariate Cox regression analysis for composite early safety at 30 days

	Odds ratio	95% Confidence interval	p-value
THV model	0.878	[0.481-1.601]	0.671
Female gender	1.925	[1.172-3.160]	0.010
Left bundle branch block	2.464	[1.307-4.647]	0.005
Right bundle branch block	2.964	[1.485-5.917]	0.002

Abbreviations: THV, transcatheter heart valve.



**Figure S1** Rates of device success according to tertiles of consecutive patients treated with the ACURATE neo SE-THV (A) and the Centera SE-THV(B).



**Figure S2** Rates of early safety at 30 days according to tertiles of consecutive patients treated with the ACURATE neo SE-THV(A) and the Centera SE-THV(B).