

Figure S1 flow diagram demonstrating the process for inclusion and exclusion

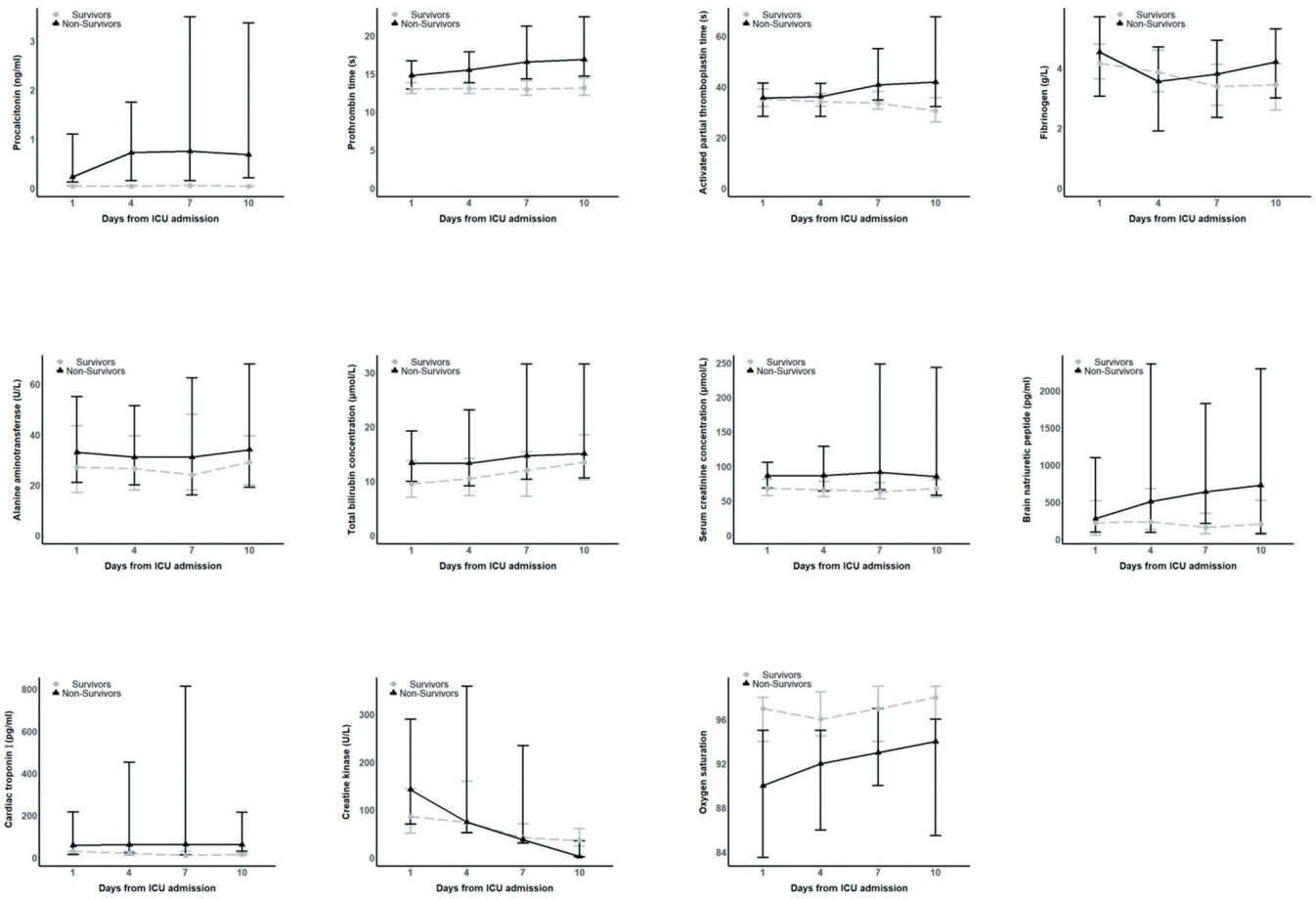


Figure S2 Supplement laboratory findings of 93 survivors with COVID-19 in Wuhan, China on days 1, 4, 7, and 10.

Table S1 Risk factors associated with in-hospital mortality

	Adjusted OR (95% CI)			
	Gender		Hypertension	
	Male (N=119)	Female (N=67)	Yes (N=85)	No (N=101)
Age group (years)				
<60	1 (Ref)	1 (Ref)	1 (Ref)	1 (Ref)
60-69	0.32 (0.07, 1.51)	5.23 (0.37, 74.89)	1.41 (0.30, 6.59)	0.14 (0.01, 1.51)
≥70	0.62 (0.12, 3.17)	5.17 (0.23, 115.89)	1.36 (0.25, 7.30)	0.19 (0.02, 2.06)
Male (vs female)	NA	NA	1.15 (0.26, 5.03)	1.05 (0.16, 7.10)
Comorbidities (present vs not present)			NA	NA
Hypertension	2.02 (0.56, 7.35)	1.96 (0.27, 14.20)	NA	NA
Laboratory findings				
Inflammatory				
Lymphocyte count, 10 ⁹ /L				
≤0.6	8.60 (2.32, 31.83)	3.74 (0.54, 25.80)	3.45 (0.93, 12.84)	10.07 (2.00, 50.68)
>0.6	1 (Ref)	1 (Ref)	1 (Ref)	1 (Ref)
C-reactive protein, mg/L				
≤100	1 (Ref)	1 (Ref)	1 (Ref)	1 (Ref)
>100	9.21 (2.39, 35.50)	-	7.76 (1.51, 39.99)	17.33 (2.61, 115.15)
Coagulation function				
D dimers, mg/L				
≤1	1 (Ref)	1 (Ref)	1 (Ref)	1 (Ref)
>1	10.79 (2.81, 41.41)	1.09 (0.17, 7.13)	6.44 (1.53, 27.06)	5.67 (1.11, 28.93)
Liver function				
Aspartate aminotransferase, U/L				
≤32	1 (Ref)	1 (Ref)	1 (Ref)	1 (Ref)
>32	4.70 (1.13, 19.51)	6.68 (0.99, 44.82)	4.27 (0.99, 18.45)	7.60 (1.41, 41.03)
Oxygenation				
Oxygenation Index				
≤200	3.92 (0.98, 15.68)	7.78 (1.02, 59.59)	10.41 (2.22, 48.95)	2.27 (0.47, 11.03)
>200	1 (Ref)	1 (Ref)	1 (Ref)	1 (Ref)

Odds ratios were calculated by logistic regression analyses. Boldface of odds ratio indicates statistical significance (p < 0.05).

OR=Odds Ratio. CI=Confidence Interval. NA=Not applicable.