

A

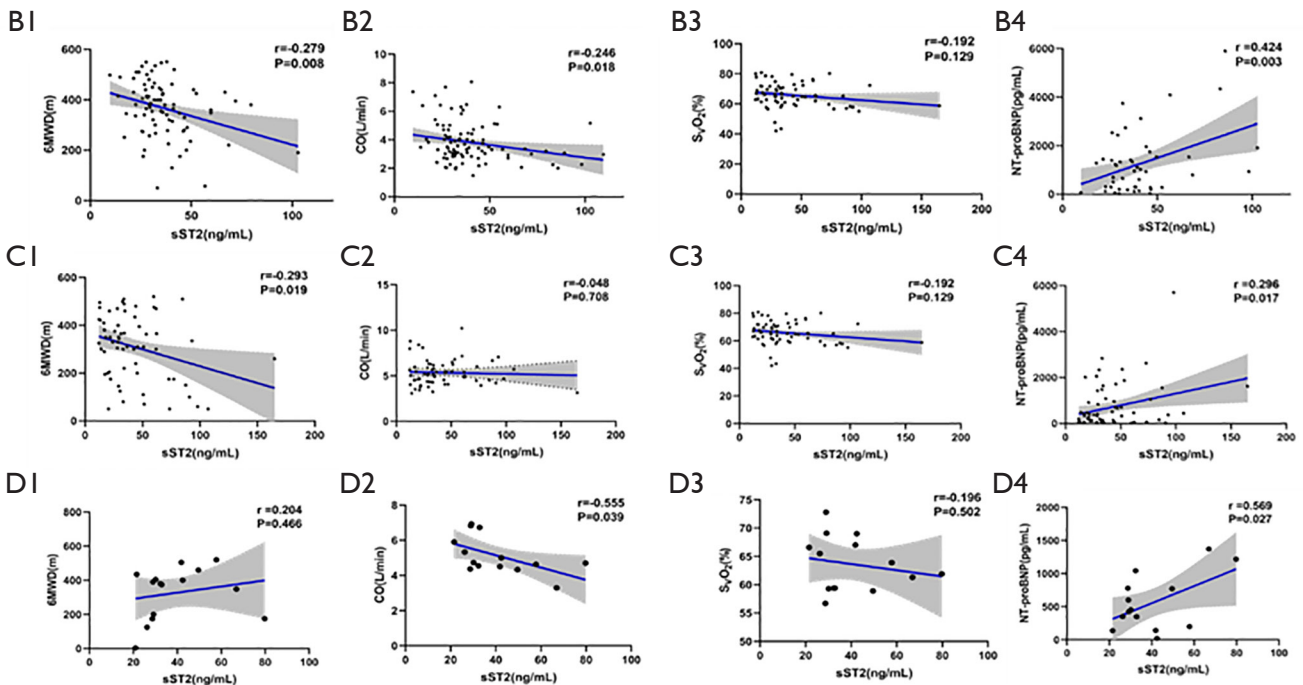
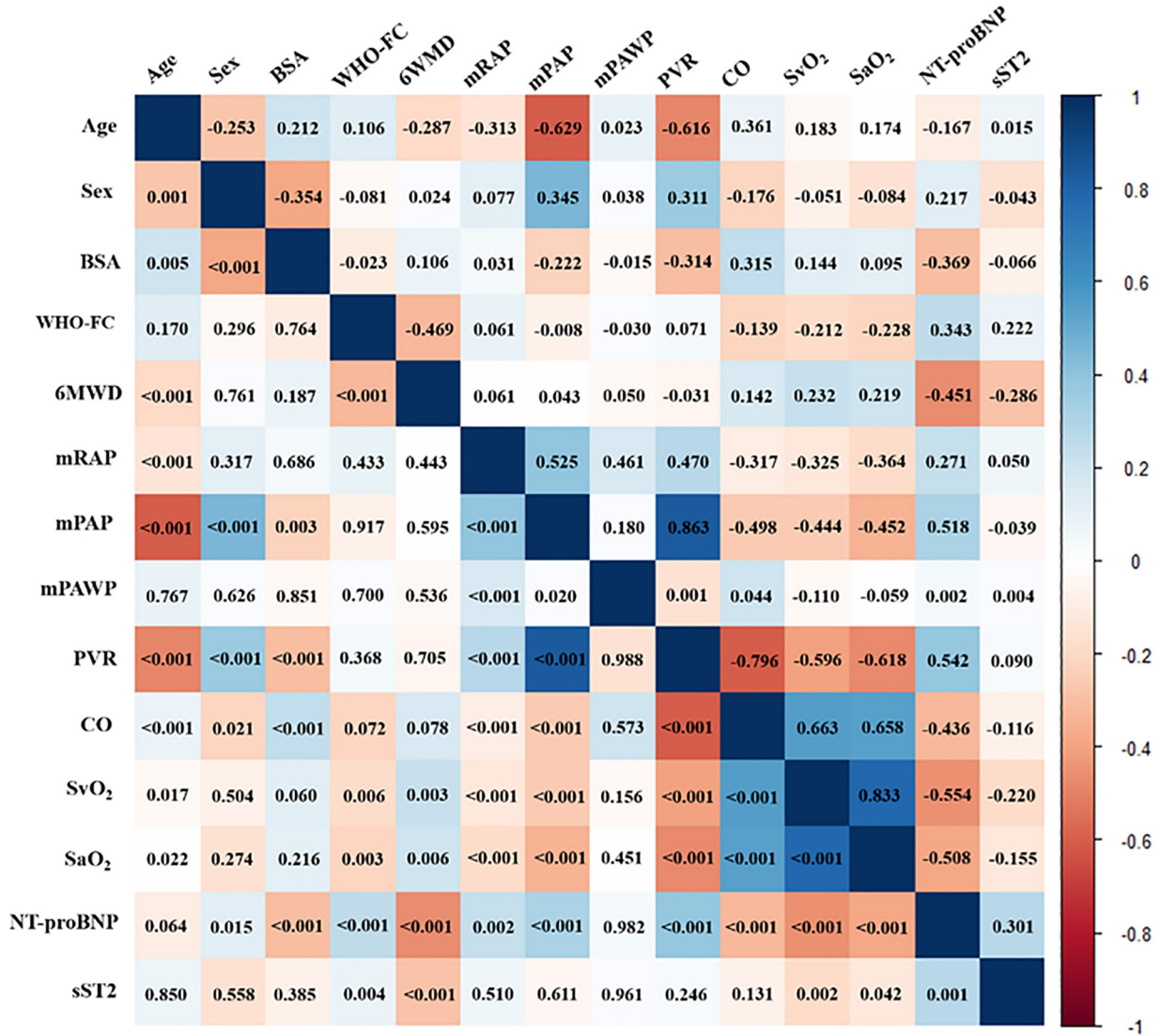


Figure S1 The relationship between sST2 and baseline characteristic. (A) The relationship between sST2 and baseline characteristics in PH (P value in the bottom left, r value in the top right). (B1-4) the relationship between sST2 and 6MWD, CO, SvO₂ and NT-proBNP in IPAH. (C1-4) the relationship between sST2 and 6MWD, CO, SvO₂ and NT-proBNP in COPD-PH. (D1-4) the relationship between sST2 and 6MWD, CO, SvO₂ and NT-proBNP in CTEPH.

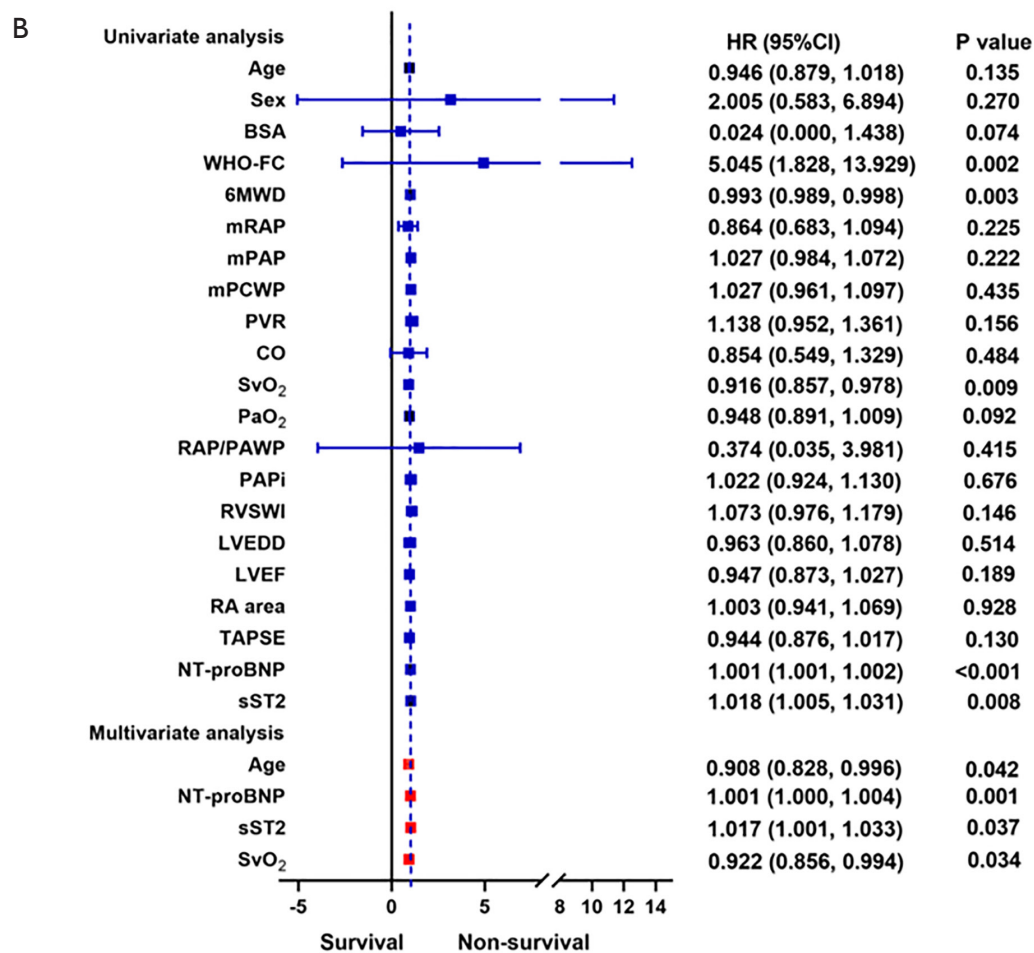
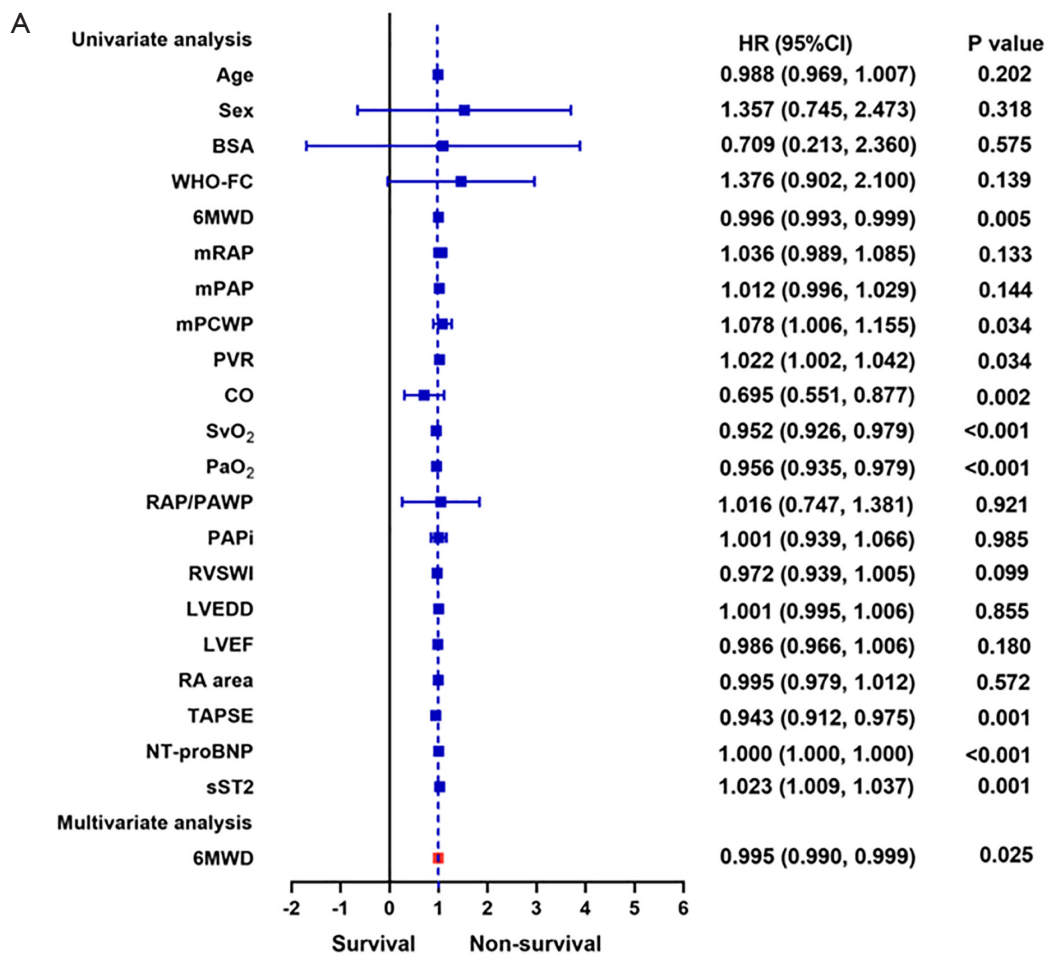


Figure S2 Forest plot showing the univariate and multivariate analysis in patients with IPAH and COPD-PH. (A) Forest plot showing the univariate and multivariate analysis in patients with IPAH. (B) Forest plot showing the univariate and multivariate analysis in patients with COPD-PH.

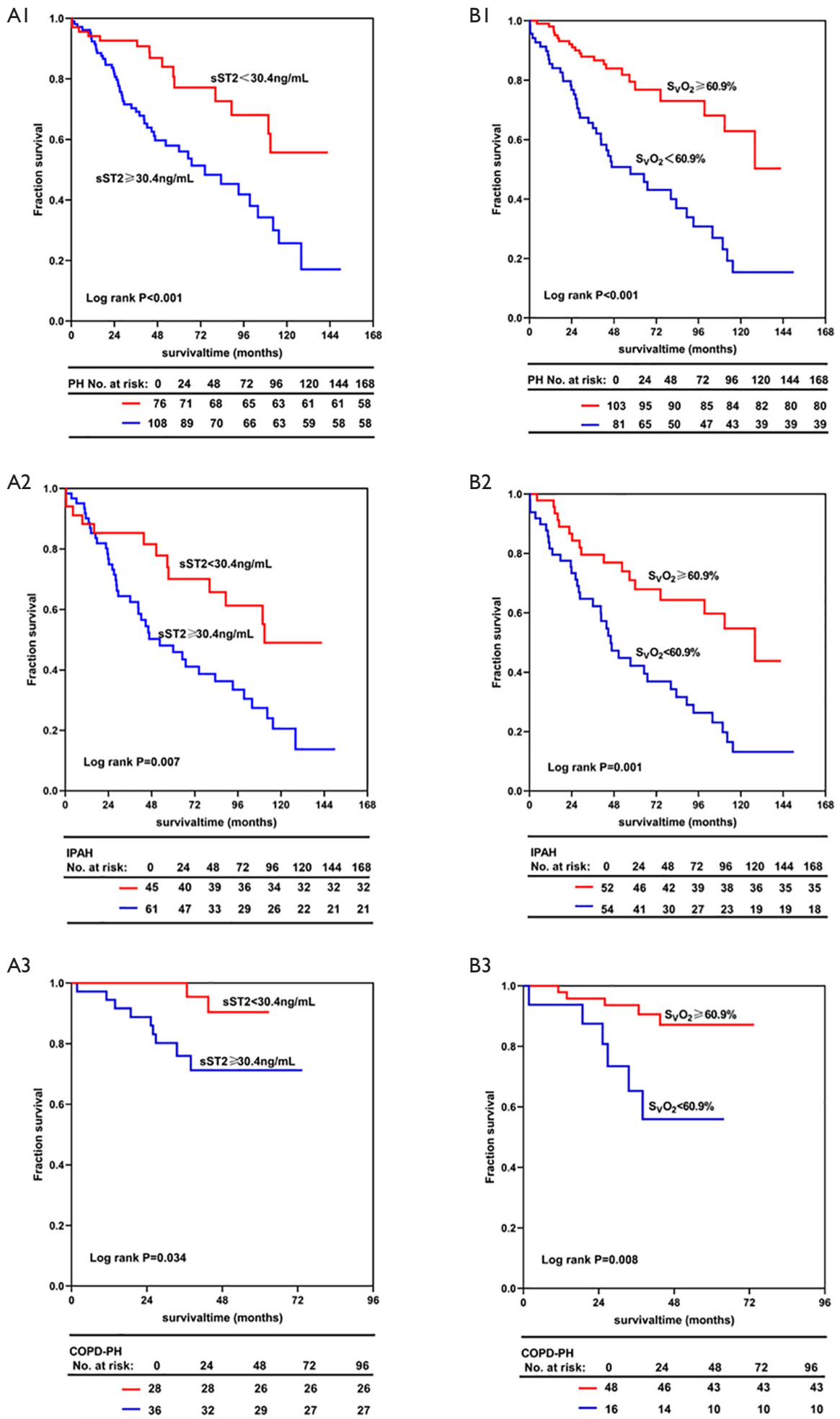


Figure S3 Kaplan-Meier estimates of survival in patients with PH. (A1-A3) sST2 <30.4 ng/mL with sST2 ≥30.4 ng/mL in patients with PH, IPAH and COPD-PH. (B1-B3) SvO₂ <60.9% with SvO₂ ≥60.9% in patients with PH, IPAH and COPD-PH.