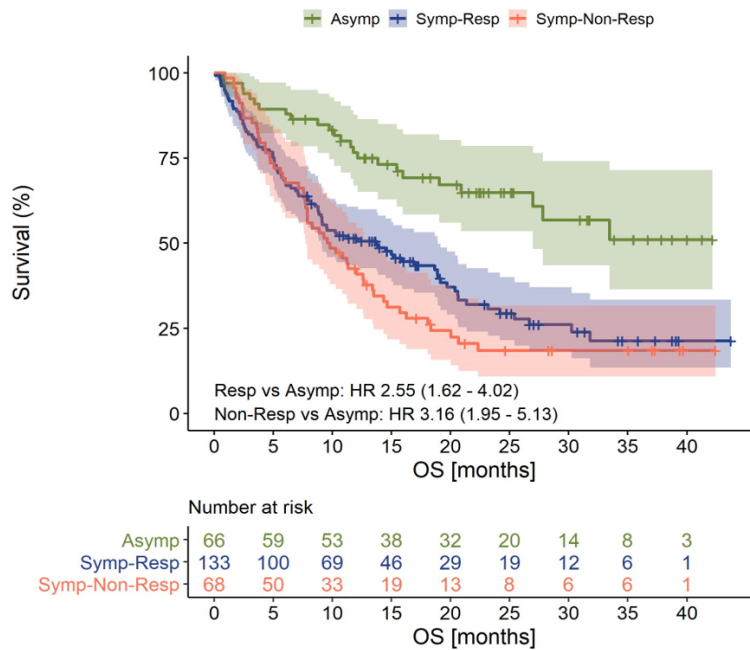


**Table S1** Characteristics of patients of the matched paired analysis for the 1:1 propensity score

Variable	[ALL] N=122	Asymptomatic N=61	Symptomatic N=61	p.overall
Age, mean (SD)	70.4 (9.54)	70.3 (9.92)	70.4 (9.21)	0.992
Sex				0.799
Male, n (%)	104 (85.2%)	51 (83.6%)	53 (86.9%)	
Female, n (%)	18 (14.8%)	10 (16.4%)	8 (13.1%)	
Stage, n (%)				0.891
I	40 (32.8%)	21 (34.4%)	19 (31.1%)	
II	14 (11.5%)	8 (13.1%)	6 (9.84%)	
III	38 (31.1%)	18 (29.5%)	20 (32.8%)	
IV	30 (24.6%)	14 (23.0%)	16 (26.2%)	
ECOG, n (%)				1.000
0-1	104 (85.2%)	52 (85.2%)	52 (85.2%)	
>1	18 (14.8%)	9 (14.8%)	9 (14.8%)	

SD: Standard deviation. ECOG: Eastern Cooperative Oncology Group.

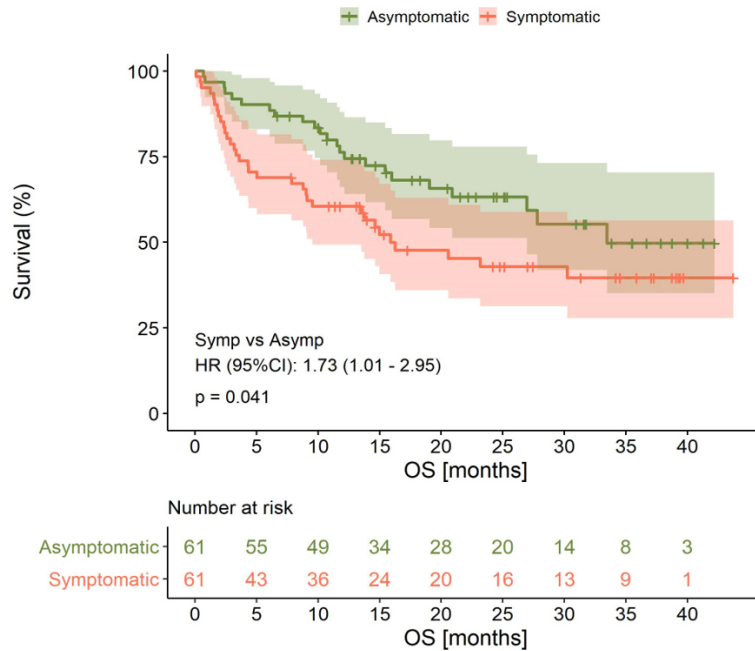


**Figure S1** Kaplan-Meier curve of the time between diagnosis and all-cause death between patients who were asymptomatic and symptomatic at diagnosis, from propensity score (PS) matching analysis. HR: Hazard Ratio. OS: Overall Survival. Symp: symptomatic patients. Asymp: asymptomatic patients.

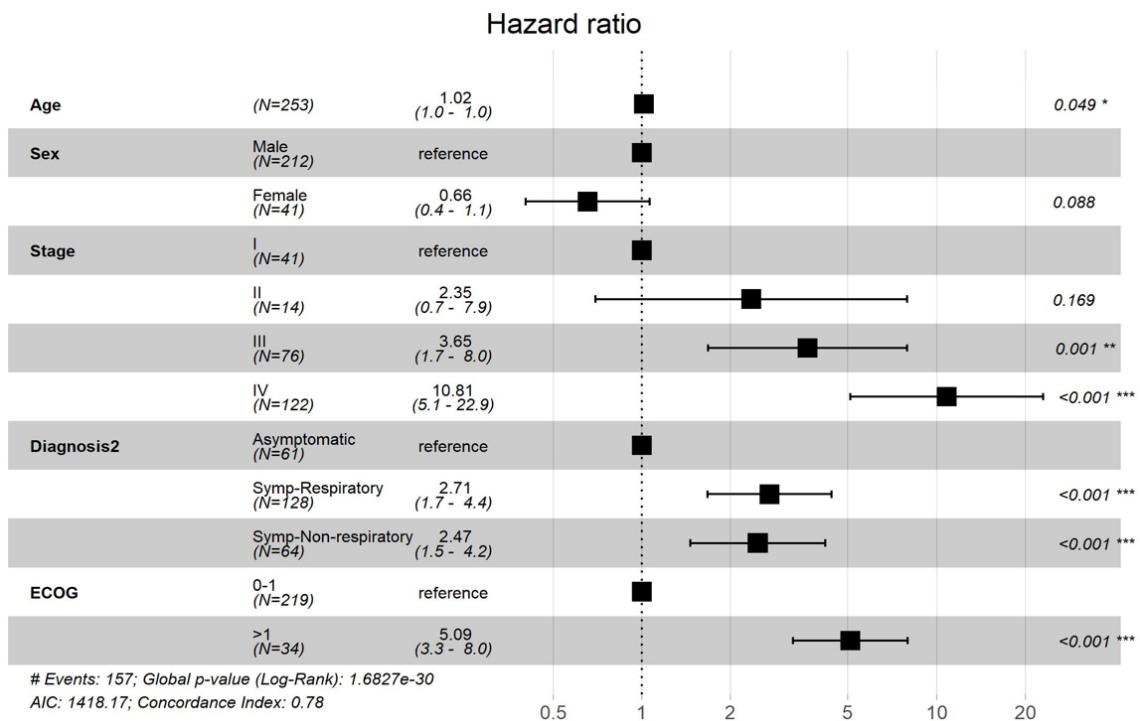
**Table S2** Clinical and demographic characteristics of patients categorized on asymptomatic, symptomatic with respiratory symptoms and symptomatic with non-respiratory symptoms

Variables	ALL N=267	Asymptomatic N=66	Symptomatic - Respiratory N=133	Symptomatic - Non- respiratory N=68	p.Asymptomatic vs. Symptomatic - Respiratory	p.Asymptomatic vs. Symptomatic - Non-respiratory	p.Symptomatic - Non-respiratory vs. Symptomatic - Respiratory
Age	68.0 (10.7)	70.9 (9.92)	65.8 (10.4)	67.7 (10.9)	0.015	0.105	0.454
Sex, male, n (%)	223 (83.5%)	55 (83.3%)	54(79.4%)	114 (85.7%)	0.817	0.817	0.817
Stage, n (%)					<0.001	<0.001	0.001
I	46 (17.3%)	25 (37.9%)	7(10.4%)	14 (10.5%)			
II	16 (6.02%)	9 (13.6%)	0(0.00%)	7 (5.26%)			
III	78 (29.3%)	18 (27.3%)	11 (16.4%)	49 (36.8%)			
IV	126 (47.4%)	14 (21.2%)	49(73.1%)	63 (47.4%)			
Smoking status, yes, n(%)	133 (86.4%)	29 (85.3%)	39(84.8%)	65 (87.8%)	1.000	1.000	1.000
Total tobacco exposure, median [p25th;p75th]	50.0 [30.0;68.5]	50.0 [31.2;60.0]	46.0 [30.0;68.5]	50.0 [35.0;75.0]	0.837	0.337	0.337
FEV1/FVC, < 70, n (%)	115 (54.0%)	31 (49.2%)	21(50.0%)	63 (58.3%)	1.000	0.689	0.689
FEV1 %, mean (SD)	74.5 (21.4)	77.4 (22.7)	77.2(19.5)	71.8 (21.3)	0.999	0.237	0.347
DLCO, mean (SD), ml CO/min/mmHg	67.6 (18.0)	67.2 (19.6)	69.3(16.7)	67.1 (17.5)	0.846	0.999	0.802
Histology, n (%)					0.720	0.720	0.720
Squamous	91 (34.1%)	24 (36.4%)	19(27.9%)	48 (36.1%)			
Adenocarcinoma	110 (41.2%)	29 (43.9%)	29(42.6%)	52 (39.1%)			
Small cell lung cancer	37 (13.9%)	8 (12.1%)	13(19.1%)	16 (12.0%)			
Other*	29 (10.9%)	5 (7.58%)	7(10.3%)	17 (12.8%)			
Deaths, n (%):	164 (61.4%)	24 (36.4%)	53(77.9%)	87 (65.4%)	<0.001	<0.001	0.096
Initial treatment, n (%)					<0.001	<0.001	0.961
Surgery	56 (21.2%)	28 (42.4%)	8(11.9%)	20 (15.3%)			
Chemotherapy	117 (44.3%)	20 (30.3%)	35(52.2%)	62 (47.3%)			
Chemoradiotherapy	57 (21.6%)	8 (12.1%)	16(23.9%)	33 (25.2%)			
Radiotherapy	17 (6.44%)	7 (10.6%)	3(4.48%)	7 (5.34%)			
Best supportive care	17 (6.44%)	3 (4.55%)	5(7.46%)	9 (6.87%)			
ECOG scale, n (%)					0.929	0.913	0.913
0-1	220 (86.6%)	52 (85.2%)	54(83.1%)	114 (89.1%)			
>1	34 (13.4%)	9 (14.8%)	11(16.9%)	14 (10.9%)			

SD: Standard deviation; p<sub>25th</sub>; p<sub>75th</sub>: 25 and 75 percentiles; FEV<sub>1</sub>: Forced expiratory volume in 1 second; FVC: Forced vital capacity. DLCO: the diffusion capacity of carbon monoxide. ECOG: Eastern Cooperative Oncology Group. Total tobacco exposure is expressed in pack-years. \* Other histologies: large cell neuroendocrine carcinoma, carcinoid tumors (typical and atypical), adenosquamous carcinoma and undifferentiated non-small cell lung cancer-not otherwise specified (NOS).



**Figure S2** Kaplan-Meier curve of the time between diagnosis and all-cause death between patients who were asymptomatic, symptomatic with respiratory symptoms and symptomatic with non-respiratory symptoms at diagnosis. Resp: symptomatic patients with respiratory symptoms. Asymp: asymptomatic patients. Non- Resp/ Symp-Non-Resp: symptomatic patients with non-respiratory symptoms. HR: Hazard Ratio. OS: Overall Survival.



**Figure S3** Multivariate Cox regression analysis adjusted by age, sex, disease stage, symptoms at diagnosis and ECOG scale. ECOG: Eastern Cooperative Oncology Group.