

Figure S1 The calibration curves for predicting OS in the SEER training cohort (A, B, C), the SEER validation cohort (D, E, F) and the SYSUCC validation cohort (G, H, I). OS, overall survival; SEER, Surveillance, Epidemiology, and End Results; SYSUCC, Sun Yat-sen University Cancer Center.

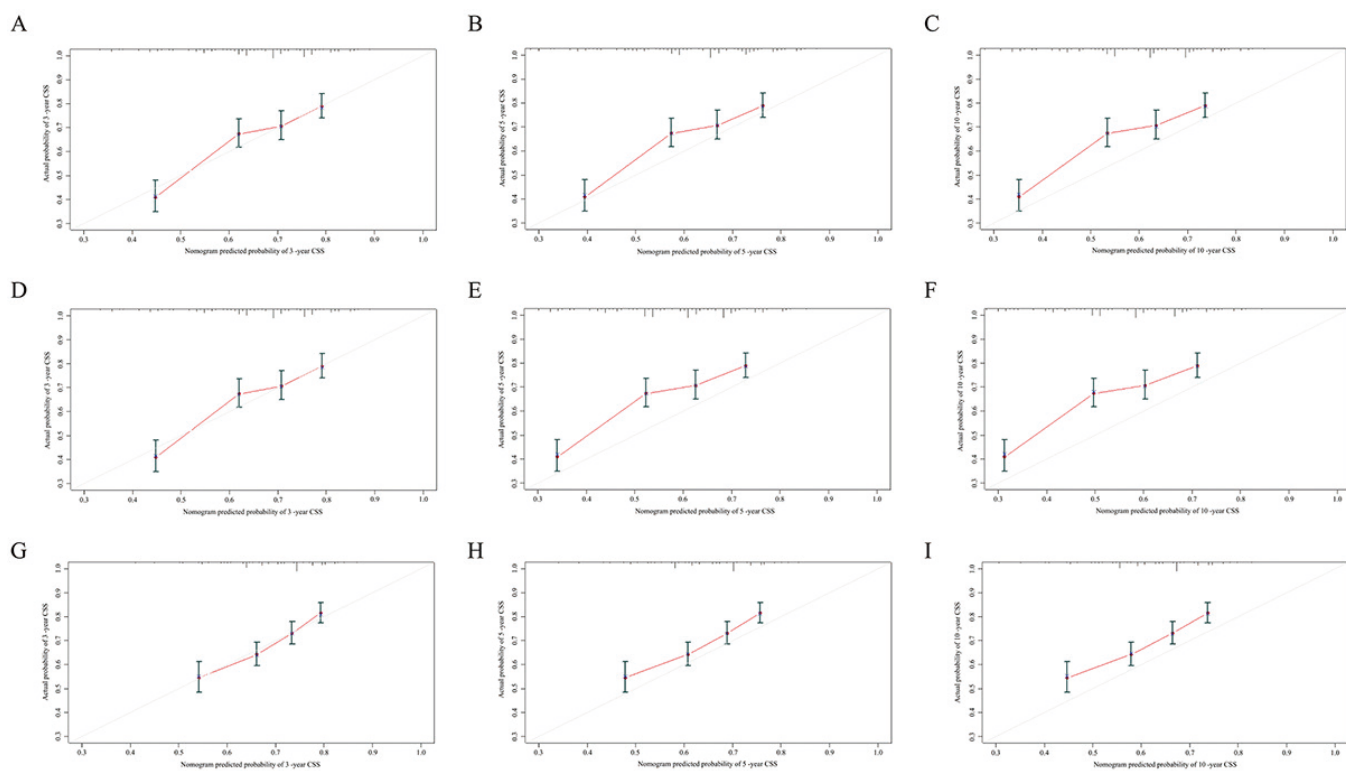


Figure S2 The calibration curves for predicting CSS in the SEER training cohort (A, B, C), the SEER validation cohort (D, E, F) and the SYSUCC validation cohort (G, H, I). CSS, cancer specific survival; SEER, Surveillance, Epidemiology, and End Results; SYSUCC, Sun Yat-sen University Cancer Center.

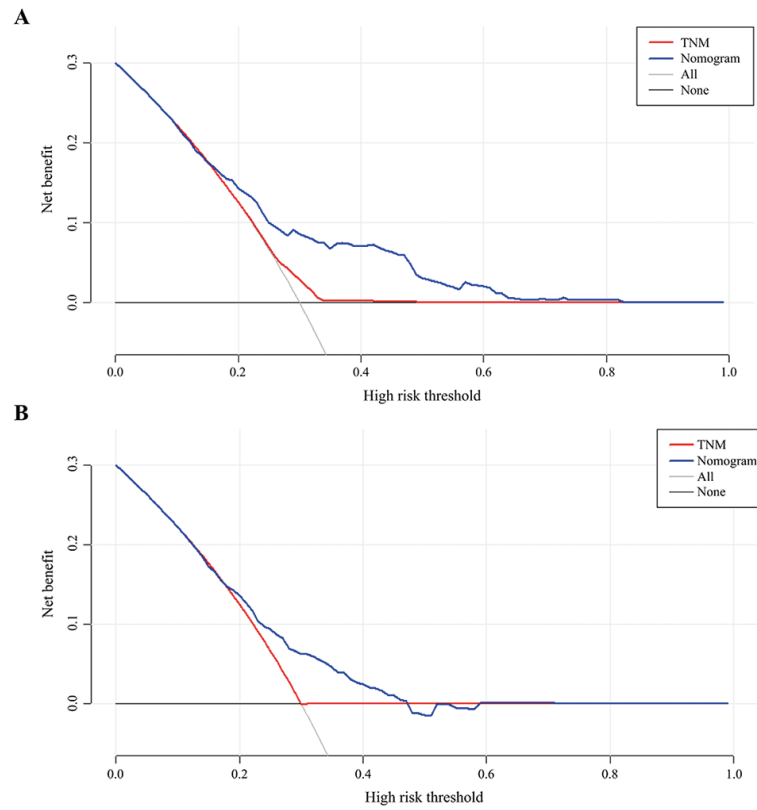


Figure S3 The decision curve analysis of the nomograms and the 8th TNM stage. OS (A) and CSS (B). OS, overall survival; CSS, cancer specific survival.