

**Table S1** First-line treatment before 2019 and after 2019

Time	First-line systemic therapy	N
Before 2019	Chemotherapyvw	573
	Chemotherapy + immunotherapy	8
	Chemotherapy + angiogenesis inhibitors	5
After 2019	Chemotherapy	625
	Chemotherapy + immunotherapy	77
	Chemotherapy + angiogenesis inhibitors	31
	Chemotherapy + immunotherapy + angiogenesis inhibitors	10

**Table S2** The composition of the 8<sup>th</sup> cT and the 9<sup>th</sup> cT

Stage	T1			T2			T3	T4
	1a	1b	1c	2	2a	2b		
8 <sup>th</sup> pTNM	6 (0.5)	39 (2.9)	89 (6.7)	74 (5.6)	188 (14.1)	148 (11.1)	331 (24.9)	454 (34.2)
9 <sup>th</sup> pTNM	6 (0.5)	39 (2.9)	89 (6.7)	74 (5.6)	188 (14.1)	148 (11.1)	331 (24.9)	454 (34.2)

**Table S3** The composition of the 8<sup>th</sup> cN and the 9<sup>th</sup> cN

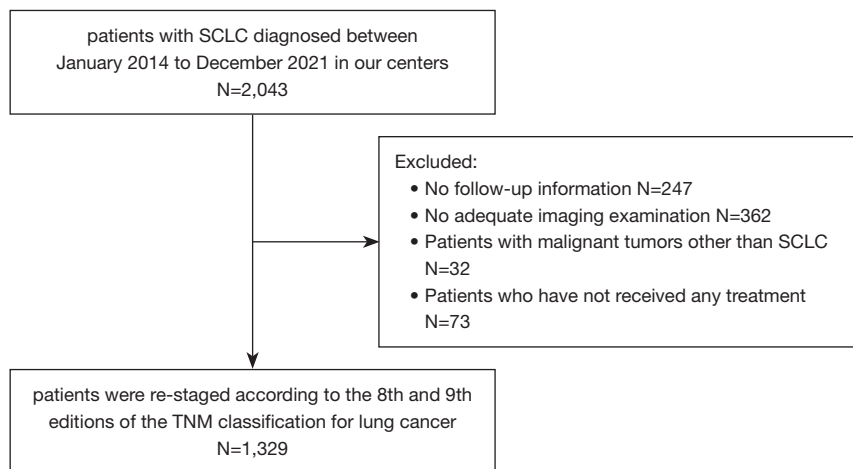
Stage	N0	N1	N2		N3
			N2a	N2b	
8 <sup>th</sup> TNM	142 (10.7)	73 (5.5)		693 (52.1)	421 (31.7)
9 <sup>th</sup> TNM	142 (10.7)	73 (5.5)	193 (14.5)	500 (37.6)	421 (31.7)

**Table S4** The composition of the 8<sup>th</sup> cM and the 9<sup>th</sup> cM

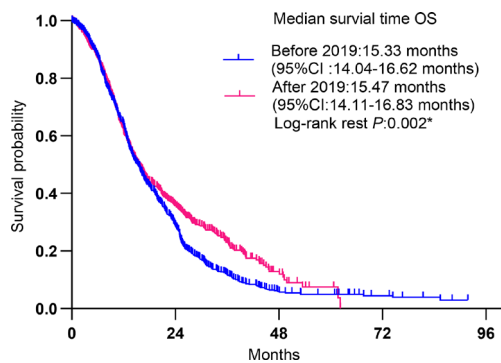
Stage	M0	M1a	M1b	M1c	
				M1c1	M1c2
8 <sup>th</sup> TNM	717 (54.0)	73 (5.5)	137 (10.3)	402 (30.2)	
9 <sup>th</sup> TNM	717 (54.0)	73 (5.5)	137 (10.3)	202 (15.2)	200 (15.0)

**Table S5** Clinical and pathological staging of SCLC patients undergoing surgery

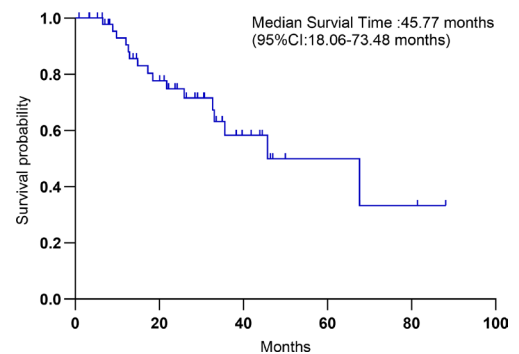
Stage	Stage I				Stage II		Stage III		
	IA1	IA2	IA3	IB	IIA	IIB	IIIA	IIIB	IIIC
8th cTNM	0 (0.0)	11 (21.6)	5 (9.8)	10 (19.6)	3 (5.9)	11 (21.6)	10 (19.6)	1 (2.0)	0 (0.0)
9th cTNM	0 (0.0)	11 (21.6)	5 (9.8)	10 (19.6)	10 (19.6)	7 (13.7)	6 (11.8)	2 (3.9)	0 (0.0)
8th pTNM	0 (0.0)	8 (15.7)	8 (15.7)	6 (11.8)	4 (7.8)	11 (21.6)	13 (25.5)	1 (2.0)	0 (0.0)
9th pTNM	0 (0.0)	8 (15.7)	8 (15.7)	6 (11.8)	12 (23.5)	3 (5.9)	11 (21.6)	3 (5.9)	0 (0.0)



**Figure S1** The process of patient screening.



**Figure S2** OS of First-line treatment before 2019 and after 2019.



**Figure S3** OS of LS-SCLC undergoing surgical treatment.