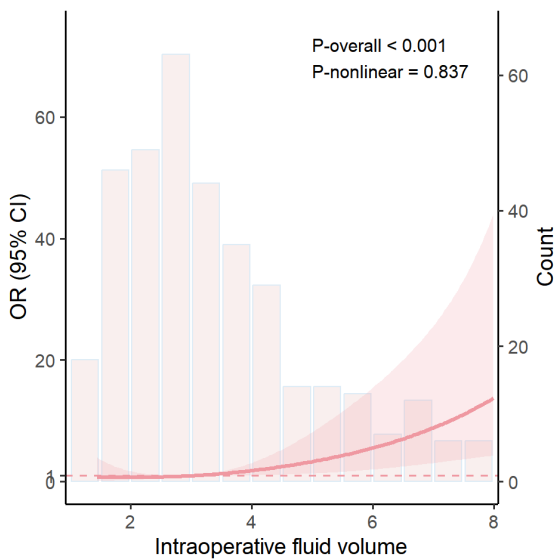
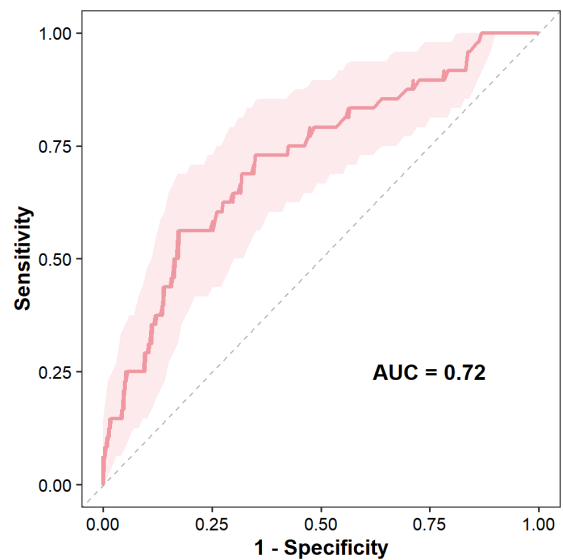


**Figure S1** VIFs for variables in Model 4. BMI, body mass index; ECMO, extracorporeal membrane oxygenation; VIF, variance inflation factor.



**Figure S2** RCS analysis of the relationship between intraoperative fluid volume and 30-day mortality. CI, confidence interval; OR, odds ratio; RCS, restricted cubic spline.



**Figure S3** ROC curve of intraoperative fluid volume for predicting 30-day mortality. AUC, area under the curve; ROC, receiver operating characteristic.