

Figure S1 Year distribution of the first pulmonary adenocarcinoma cell carcinoma and second pulmonary adenocarcinoma cell carcinoma.

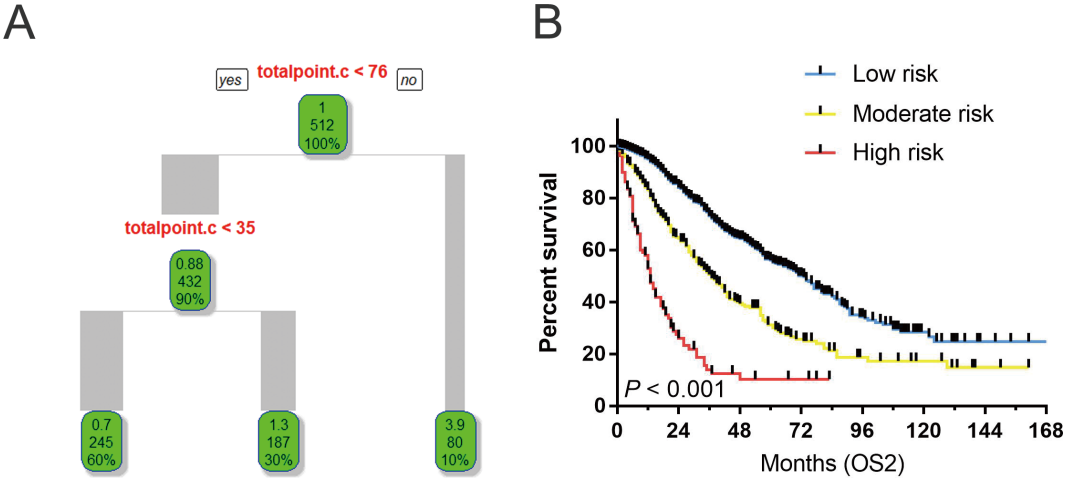


Figure S2 The recursive partitioning analysis (RPA) grouping into three risk categories for OS2 (A); the Kaplan-Meier survival curve for OS2 is well stratified by the RPA risk stratification system (B).

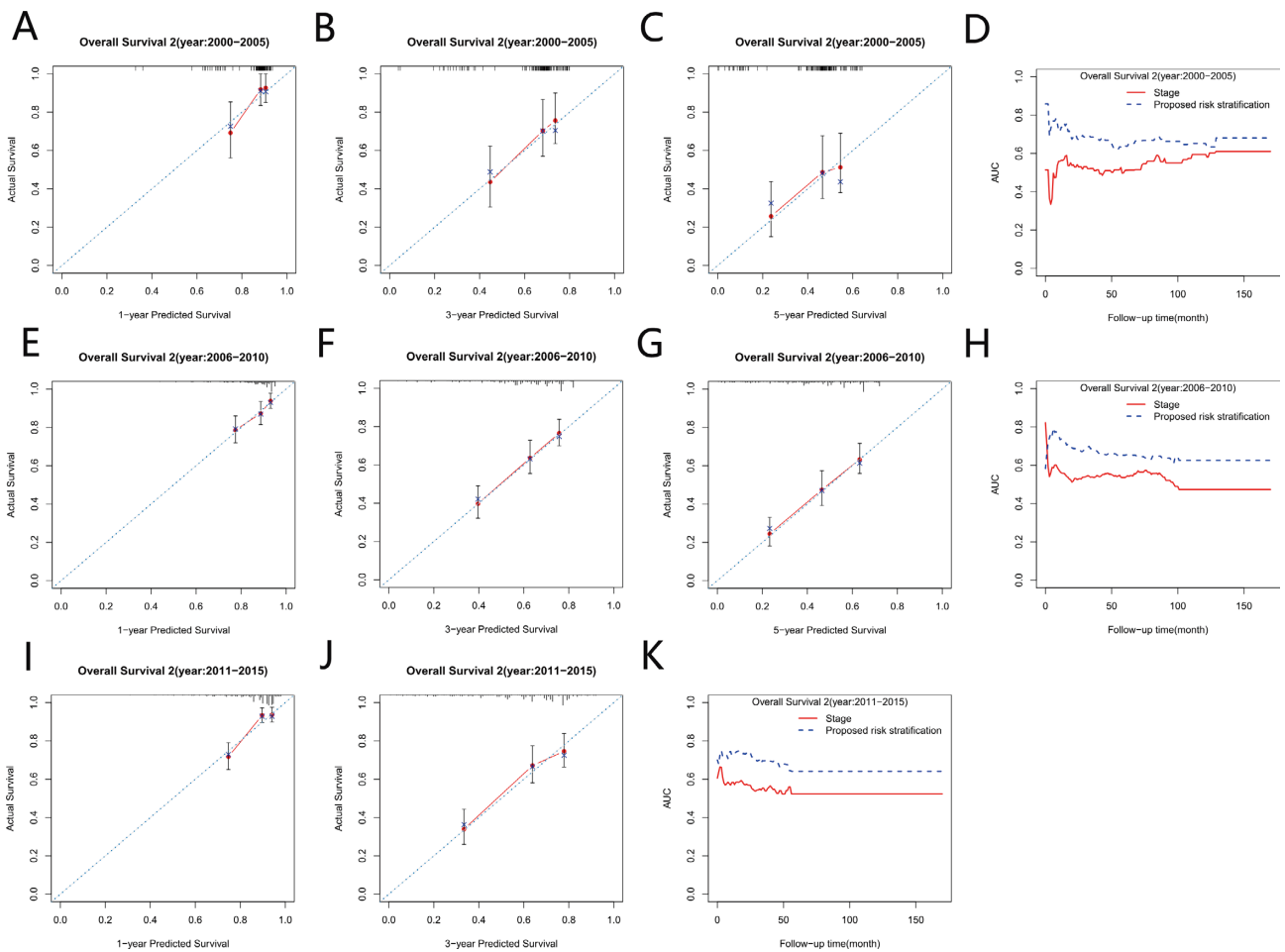


Figure S3 The proposed risk stratification system present a higher predict accuracy on prognosis than the TNM stage system in patients with 2000-2005 group (A/B/C/D), and 2006-2010 group (E/F/G/H), and 2011-2015 group (I/J/K).