

Supplementary

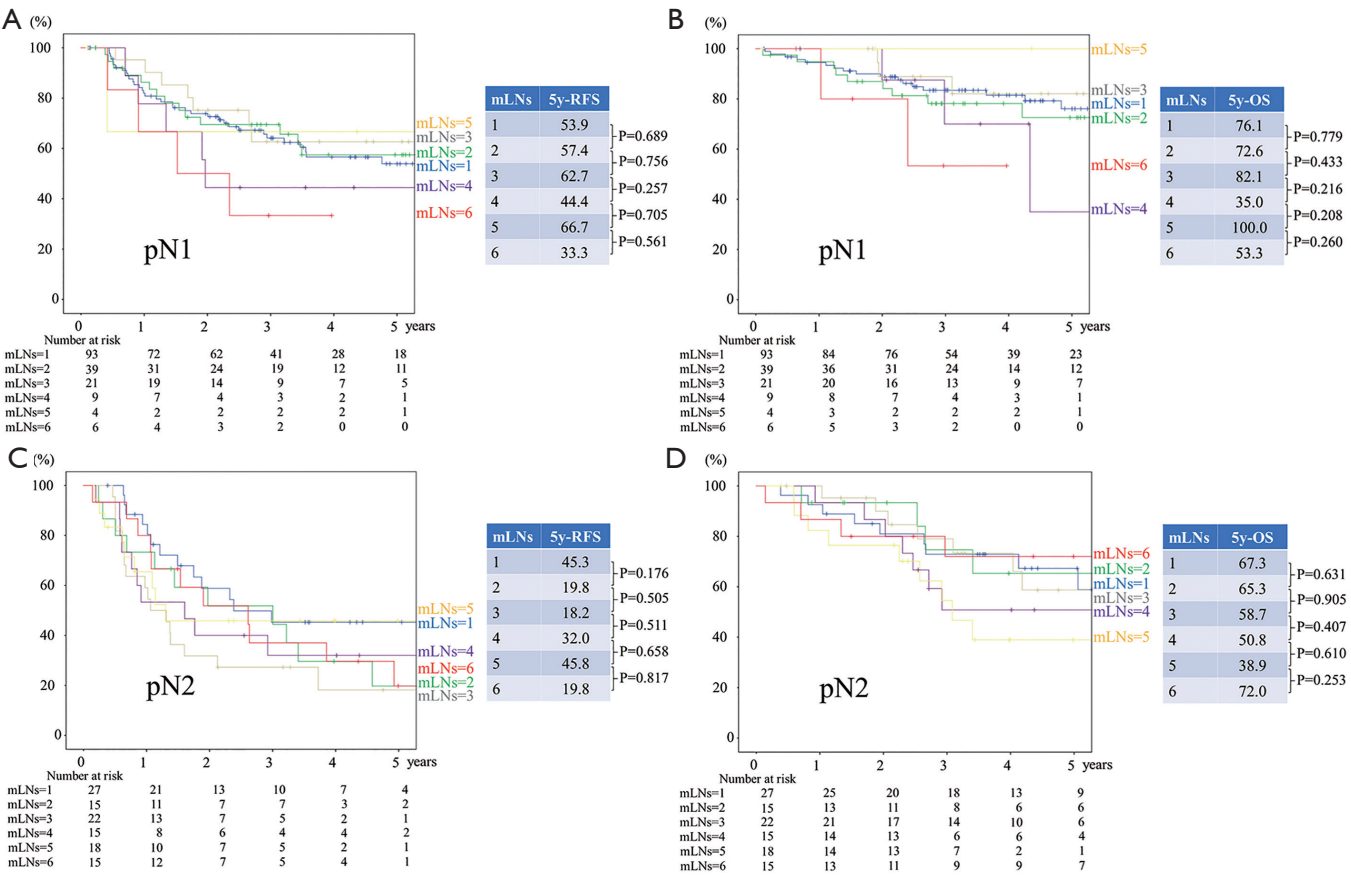


Figure S1 RFS (A) and OS (B) curves for patients with pN1 disease and 1–6 mLN. RFS (C) and OS (D) curves for patients with pN2 disease and 1–6 mLN. The RFS and OS curves for pN1 patients with 1, 2, and 3 mLN overlapped each other and fell below the curves for pN1 patients with 4–6 mLN. In patients with pN2 disease, those with 1 mLN had a relatively good prognosis, and there was no difference in survival between patients with ≥ 2 mLN. mLN, metastatic lymph nodes; OS, overall survival; pN, pathological node; RFS, recurrence-free survival.