

Supplementary

Table S1 Performance for predicting the occurrence of RPVO in patients with chronic lung disease and P/A ratio >1.0 in chest CT

	Sensitivity	Specificity	PPV	NPV	Accuracy
Patients with two factors	66.7%	87.5%	60%	90.3%	82.9%

RPVO, residual pulmonary vascular obstruction; P/A ratio, the ratio of the diameters of the main pulmonary artery and ascending aorta; CT, computed tomography; PPV, positive predictive value; NPV, negative predictive value.

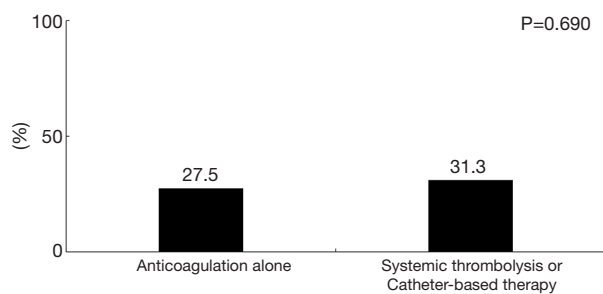


Figure S1 The incidence of RPVO based on treatments. RPVO, residual pulmonary vascular obstruction.