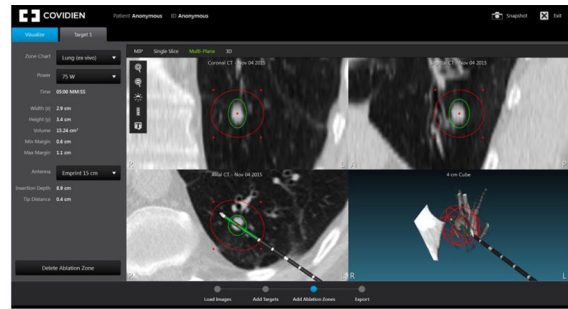
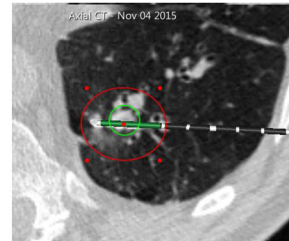




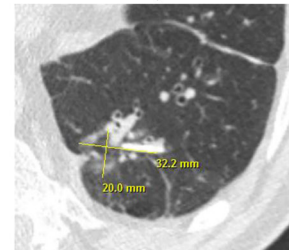
Figure S1 Lung wedge resection after pathologic processing to demonstrate the microwave ablated area with surrounding lung tissue after all stapled margins have been removed. The small circle represents the extent of the tumor and the larger circle represents ablated tissue markings from microwave energy.



Software planned probe placement.



Revised plan based on probe placement.



CT following ablation.



Surgical resection and histological analysis.

Figure S2 The stepwise approach for microwave tumor ablation including software planning for probe placement, revising probe position based on CT images, imaging the lesion after ablation, and finally, histologic analysis of the resected specimen.