

References

1. Shen C, Sun X, Wang H, et al. Association Study of CRP Gene and Ischemic Stroke in a Chinese Han Population. *J Mol Neurosci* 2013;49:559-66.
2. Kony S, Zureik M, Driss F, et al. Association of bronchial hyperresponsiveness and lung function with C-reactive protein (CRP): A population based study. *Thorax* 2004;59:892-6
3. Hutchinson WL, Koenig W, Fröhlich M, et al. Immunoradiometric assay of circulating C-reactive protein: Age-related values in the adult general population. *Clin Chem* 2000;46:934-8.
4. Clark ML, Peel JL, Burch JB, et al. Impact of improved cookstoves on indoor air pollution and adverse health effects among Honduran women. *Int J Environ Health Res* 2009;19:357-68.
5. Dutta A, Ray MR, Banerjee A. Systemic inflammatory changes and increased oxidative stress in rural Indian women cooking with biomass fuels. *Toxicol Appl Pharmacol* 2012;261:255-62.
6. Nagano M, Nakamura M, Sato K, et al. Association between serum C-reactive protein levels and pulse wave velocity: a population-based cross-sectional study in a general population. *Atherosclerosis* 2005;180:189-95.
7. Melbye H, Amundsen K, Brox J, et al. The association between self-reported symptoms of recent airway infection and CRP values in a general population. *Inflammation*. 2012;35:1015-22.
8. Kamal A, Cincinelli A, Martellini T, et al. Biomarkers of PAH exposure and hematologic effects in subjects exposed to combustion emission during residential (and professional) cooking practices in Pakistan. *Environ Sci Pollut Res* 2016;23:1284-99.
9. Gelaye B, Revilla L, Lopez T, et al. Association between insulin resistance and c-reactive protein among Peruvian adults. *Diabetol Metab Syndr* 2010;2:30.
10. Botha S, Fourie CMT, Schutte R, et al. Soluble urokinase plasminogen activator receptor as a prognostic marker of all-cause and cardiovascular mortality in a black population. *Int J Cardiol* 2015;184:631-6.
11. Lahoz C, Castillo E, Mostaza JM, et al. Relationship of the adherence to a mediterranean diet and its main components with CRP levels in the Spanish population. *Nutrients* 2018;10:1-9.
12. Charuruks N, Laohajinda B, Rujiwanitgun S, et al. Reference value for C-reactive protein and its distribution pattern in Thai adults. *Circ J* 2005;69:339-44.
13. Belfki H, Ben Ali S, Bougateg S, et al. Relationship of C-reactive protein with components of the metabolic syndrome in a Tunisian population. *Eur J Intern Med* 2012;23:e5-e9.
14. Alley DE, Seeman TE, Ki Kim J, et al. Socioeconomic status and C-reactive protein levels in the US population: NHANES IV. *Brain Behav Immun* 2006;20:498-504.

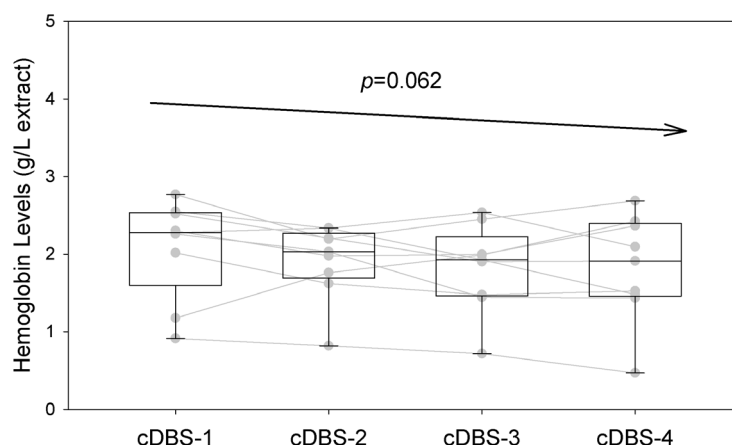


Figure S1 Hemoglobin levels in different blood drops from the same participants with a single finger prick. The effects of cDBS's chronological order on biomarker concentrations were tested by linear mixed effects models with random intercepts of study participants.

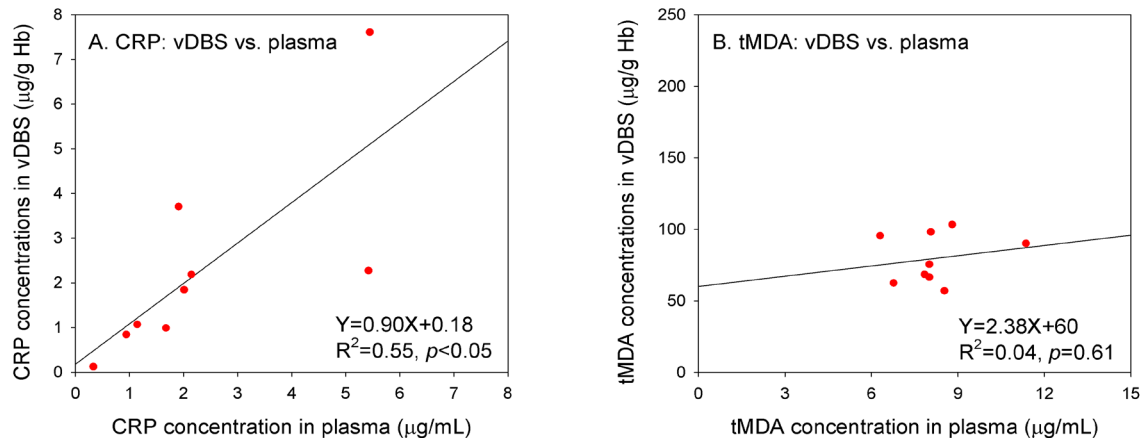


Figure S2 Relationship of CRP (panel A) and tMDA (panel B) concentrations in plasma and vDBS samples.

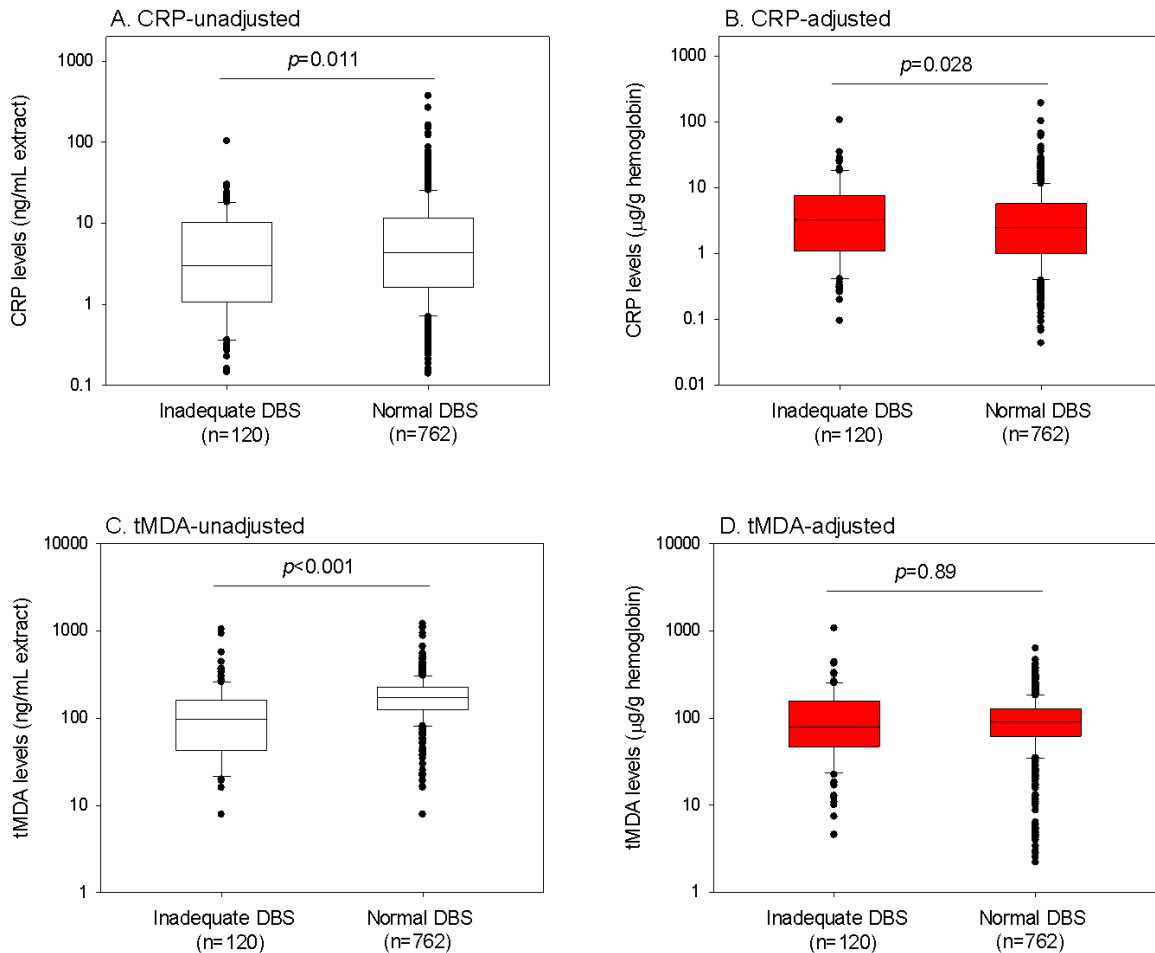


Figure S3 Concentrations of CRP and tMDA in DBS samples with and without adequate blood for laboratory analysis. White and red plots indicate unadjusted and adjusted data, respectively. Between-group differences were tested by two-way ANOVA controlled for study participants; data was log-transformed before the analysis.

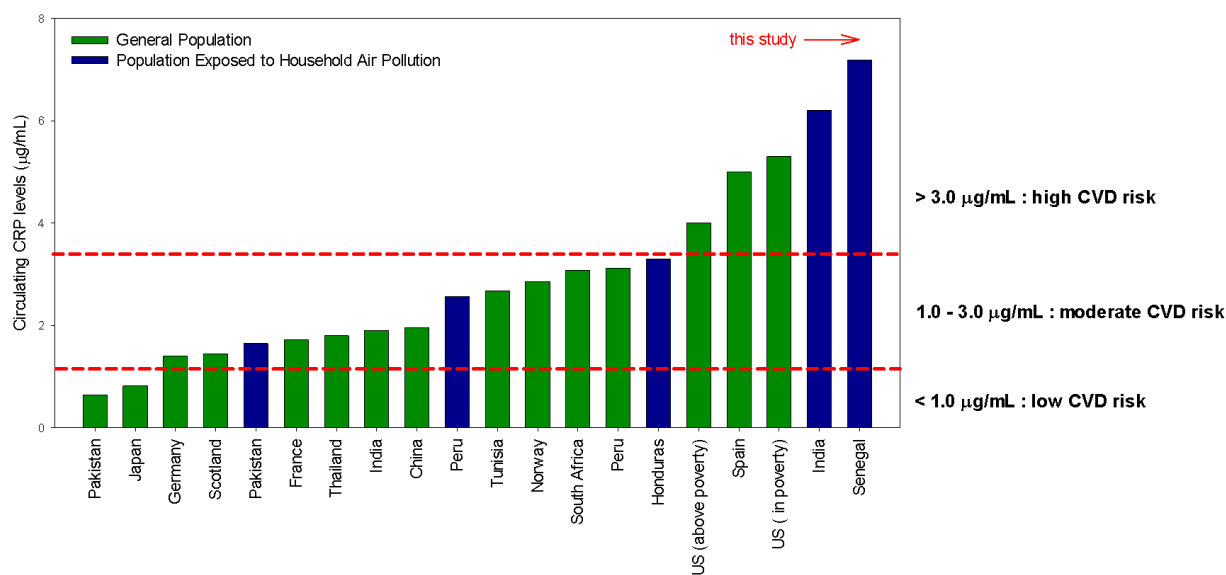


Figure S4 Average concentrations of circulating CRP in populations from different countries. Detailed population information: China, n=993 (399 men and 594 women), average age=65 years (1); France, n=259 (117 men and 142 women), average age=45 years (2); Germany, n=4,494 (2,291 men and 2,203 women), age 25–74 years (3); Honduras, n=38 (all women), average age =38 years (4); India-general population, n=452 (all women), age 25–44 years (5); Indian-exposed population, n=635 (all women), age 24–44 years (5); Japan, n=8,425 (4,140 men and 4,285 women), age 40–79 years (6); Norway, n=6,325 (2,711 men and 3,614 women), average age =64 years (7); Pakistan-general population, n=66 (34 men and 32 women), average age =40 years (8); Pakistan-exposed population, n=120 (60 men and 60 women), average age =42 years (8); Peru-general population, n=228 (121 men and 107 women), average age =54 years (9); Peru-exposed population, n=228 (95 men and 133 women), average age =58 years (9); Scotland, n=1,254 (604 men and 650 women), age 25–64 years (3); South Africa, n=1,217 (426 men and 791 women), average age=50 years (10); Spain, n=1,411 (602 men and 809 women), average age=61 years (11); Thailand, n=464 (185 men and 279 women), average age=42 years (12); Tunisia, n=152, average age =50 years (13); US (in poverty), n=1,218 (512 men and 706 women), average age = 42 years (14); US (above poverty), n=5,728 (2,094 men and 2,824 women), average age =47 years (14).