

Table S1 Comparison of baseline characteristics between patients with and without chest CT scans

Variables	Total (N=387)	CT (-) (N=240)	CT (+) (N=147)	P value
Demographics				
Age	57.8±18.2	56.4±18.4	60.0±17.7	0.060
Sex				0.772
Male	193 (49.9)	117 (49.0%)	75 (51.0%)	
Female	194 (50.1)	122 (51.0%)	72 (49.0%)	
Body mass index, kg/m ²	25.4±4.4	25.2±4.3	25.7±4.6	0.373
Ct value of RdRp gene		19.0±5.9	18.9±5.6	0.804
Asymptomatic infection, (%)	40 (10.3)	30 (12.5%)	10 (6.8%)	0.106
Comorbidities				
Hypertension	151 (39.0)	92 (38.3%)	59 (40.1%)	0.806
Diabetes	72 (18.6)	40 (16.7%)	32 (21.8%)	0.264
Cardiovascular disease	44 (11.4)	25 (10.4%)	19 (12.9%)	0.556
Cancer	27 (7.0)	23 (9.6%)	4 (2.7%)	0.018
Chronic lung disease	23 (5.9)	13 (5.4%)	10 (6.8%)	0.735
Chronic kidney disease	17 (4.4)	10 (4.2%)	7 (4.8%)	0.983
Cerebrovascular disease	17 (4.4)	9 (3.8%)	8 (5.4%)	0.594
Solid organ transplantation	5 (1.3)	4 (1.7%)	1 (0.7%)	0.711

Data are presented as numbers (%) or means±standard deviations. CT, computed tomography; Ct, cycle threshold.

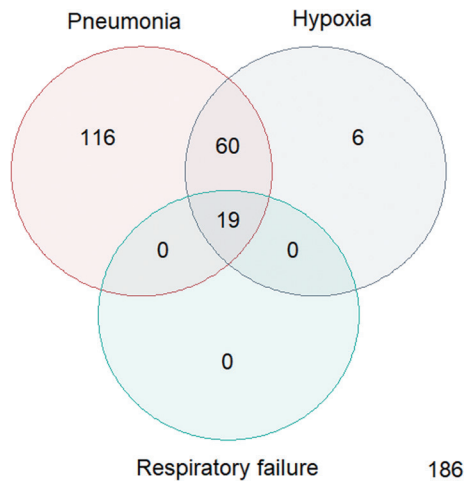


Figure S1 Venn diagram of study participants.

Table S2 Univariable logistic regression for respiratory outcomes

Variables	Pneumonia		Hypoxia		Respiratory failure	
	OR	95% CI	OR	95% CI	OR	95% CI
Demographics						
Age	1.004	0.993–1.015	1.020	1.005–1.034	1.001	1.000–1.002
Female sex	0.796	0.534–1.187	0.929	0.572–1.506	1.005	0.962–1.049
Body mass index	1.001	0.956–1.048	1.033	0.979–1.091	1.003	0.998–1.008
Vaccinated	0.305	0.201–0.463	0.456	0.278–0.748	0.969	0.928–1.012
Comorbidities						
Hypertension	0.703	0.467–1.060	1.195	0.733–1.948	1.051	1.006–1.098
Diabetes	1.482	0.883–2.489	1.760	0.993–3.120	1.061	1.004–1.121
Hyperlipidemia	0.616	0.377–1.008	1.167	0.658–2.070	1.030	0.977–1.085
Cardiovascular disease	1.207	0.643–2.266	1.578	0.786–3.172	1.076	1.005–1.151
Chronic kidney disease	1.429	0.532–3.833	1.098	0.349–3.458	1.143	1.029–1.268
Laboratory findings						
RdRp gene	0.998	0.964–1.033	1.003	0.963–1.047	0.997	0.993–1.000
WBC, / μ L*1000	1.038	0.976–1.104	1.131	1.040–1.231	1.009	1.003–1.015
Neutrophil, %	1.053	1.035–1.071	1.117	1.087–1.149	1.005	1.004–1.007
Lymphocyte, %	0.958	0.940–0.976	0.889	0.860–0.918	0.995	0.993–0.997
Platelet, / μ L*1000	0.997	0.994–0.999	0.997	0.994–1.000	1.000	1.000–1.000
LDH, U/L	1.012	1.009–1.016	1.014	1.010–1.017	1.001	1.001–1.001
AST, U/L	1.025	1.012–1.039	1.021	1.009–1.033	1.003	1.002–1.004
CRP, mg/dL	1.731	1.493–2.008	1.511	1.366–1.672	1.021	1.018–1.025
Ferritin, ng/mL	1,993	1.001–1.004	1.002	1.001–1.002	1.000	1.000–1.000
Fibrinogen, mg/dL	1.009	1.006–1.011	1.008	1.006–1.010	1.000	1.000–1.000
D-dimer, μ g/dL	1.092	0.980–1.216	1.140	1.019–1.218	1.009	1.000–1.017
Image findings						
HAA, %	1.206	1.098–1.325	1.212	1.128–1.301	1.022	1.016–1.028
LAA, %	0.893	0.814–0.979	0.962	0.874–1.058	0.988	0.975–1.000
Consolidation, %	2.340	1.070–5.130	3.480	1.740–6.937	2.830	1.205–6.667

OR, odds ratio; CI, confidence interval; WBC, white blood cell; LDH, lactate dehydrogenase; AST, aspartate aminotransferase; CRP, C-reactive protein; HAA, high-attenuation area; LAA, low-attenuation area.

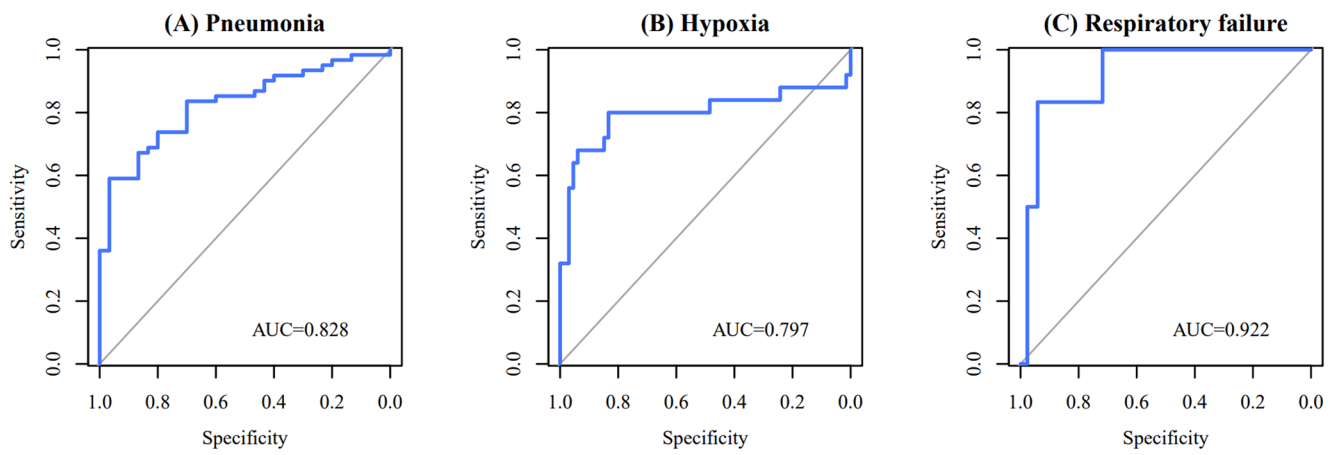


Figure S2 Receiver operating characteristic curve of the random forest models for (A) pneumonia, (B) hypoxia, and (C) respiratory failure.