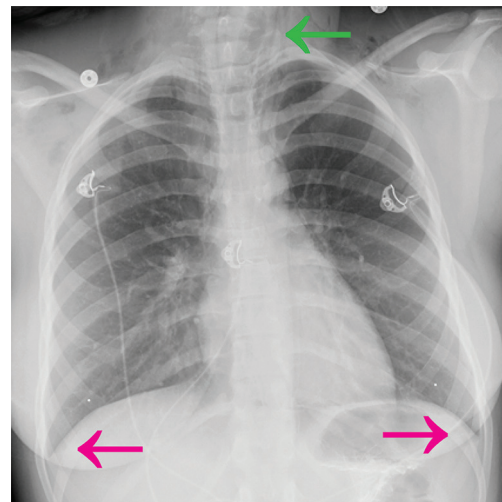


**Figure S1** Pseudopneumothorax in patients with PSPM. (A) CXR chest demonstrating pseudopneumothorax in a patient with PSPM. Note the gas under the parietal pleura (green arrows). (B) CT chest demonstrating pseudopneumothorax (green arrows) in the series.

**Table S1** Vitals and laboratory data

	N=100
<b>Vital Signs Data</b>	
Temperature (°C)	36.8±0.4
Heart rate (bpm)	90.1±21
Mean systolic blood pressure (mmHg)	128.8±16.4
Mean diastolic blood pressure (mmHg)	74.6±12.7
Mean MAP (mmHg)	92.5±13.1
Respiratory rate (breaths per minute)	18.7 ± 3.8
SpO2 (% oxygen saturation)	97.5 ± 2.3
<b>Laboratory Data</b>	
WBC (×10 <sup>9</sup> /L)	12±5.6
Hgb (g/dL)	14.6±1.9
PLT (×10 <sup>9</sup> /L)	346±86
Cr (mg/dL)	0.95±0.32

Data are listed as mean ± standard deviation of the mean.



**Figure S2** Absence of pleural effusion on CXR of the single patient with reported trace pleural effusions. CXR of the single patient with pneumomediastinum (green arrow) and reported trace pleural effusions. No effusion was found on retrospective review. Pink arrows indicate crisp costophrenic angles with no pleural effusion.