

Table S1 Immunotherapy administration methods and doses

ICI drugs	Dose and usage
Nivolumab	3 mg/kg, 2W
Pembrolizumab	200 mg, 3W
Tislelizumab	200 mg, 3W
Sintilimab	200 mg, 3W
Camrelizumab	200 mg, 3W
Atezolizumab	1200 mg, 3W
Durvalumab	10 mg/kg, 2W or 20 mg/kg, 3W

ICI, immune checkpoint inhibitor; W, week.

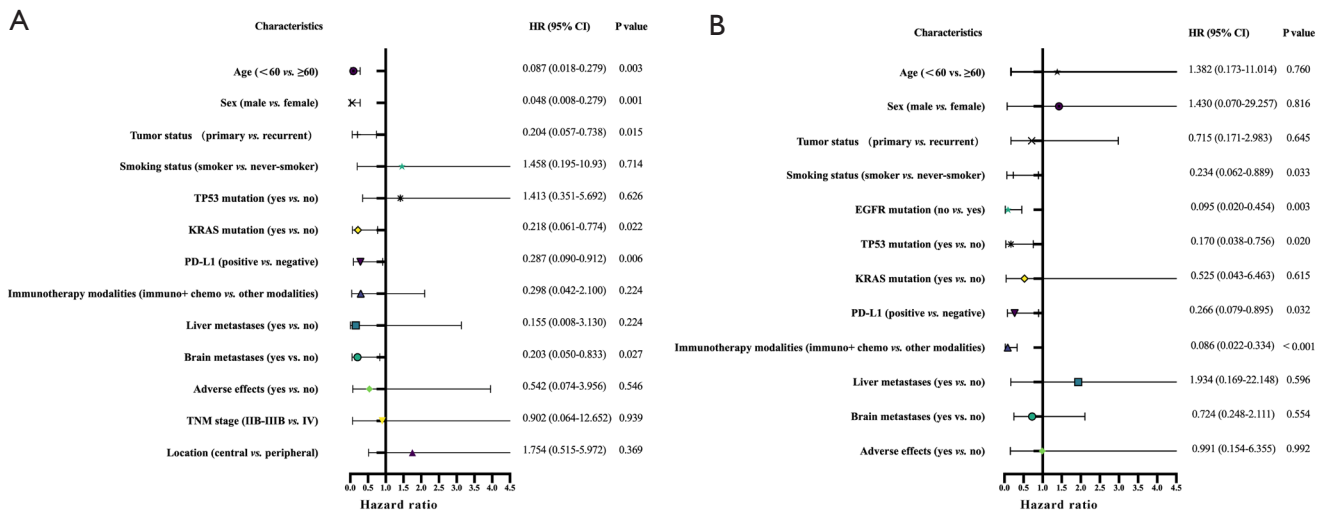


Figure S1 Forest plot of the Cox proportional hazard multivariable modeling of progression-free survival. (A) Multivariate analysis of progression-free survival in lung adenocarcinoma patients receiving first-line immunotherapy. (B) Multivariate analysis of progression-free survival in lung adenocarcinoma patients receiving second-line and above immunotherapy.

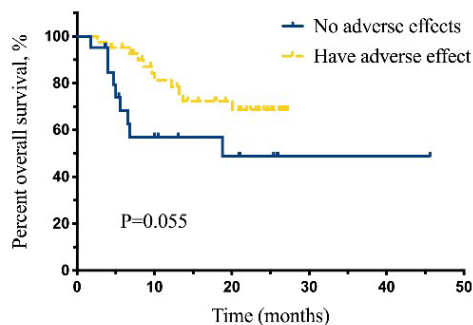


Figure S2 Overall survival of lung adenocarcinoma patients with and without adverse effects receiving first-line immunotherapy.