

Figure S1 Percentage of IIA NSCLC patients who received surgery with different lymph nodes removed over time (2004–2015). NSCLC, non-small cell lung cancer.

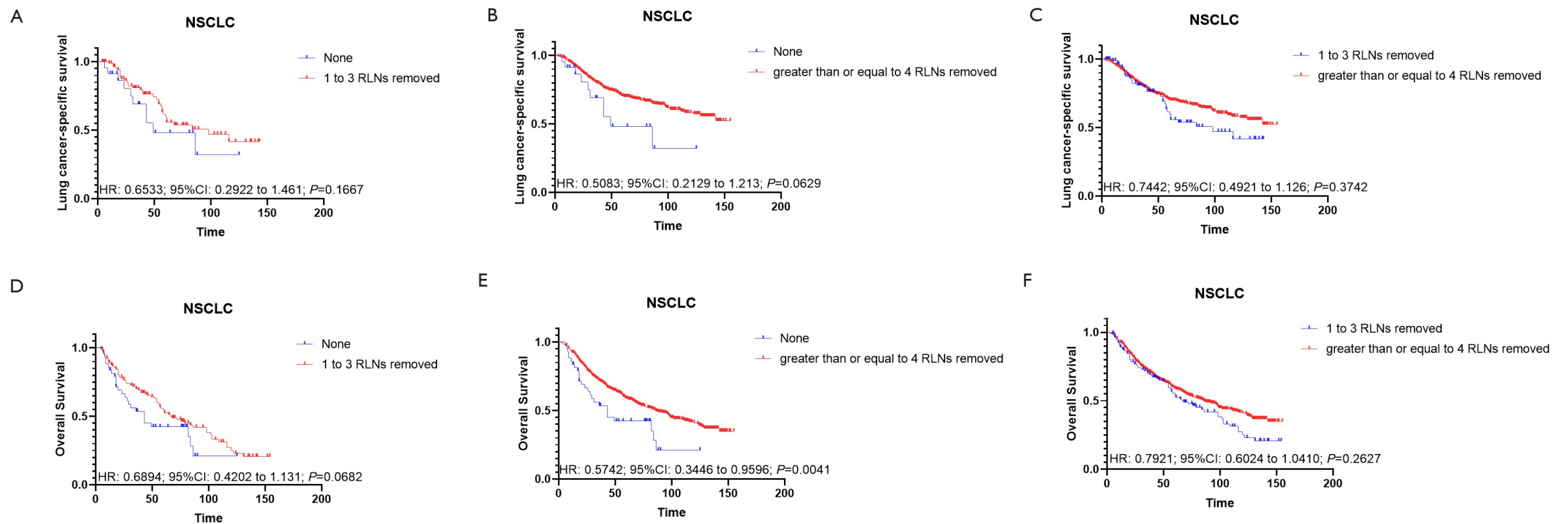


Figure S2 Comparison of survival curves among three groups: patients underwent CT + no RLNs removed, CT + 1 to 3 RLNs removed and CT + greater than or equal to 4 RLNs removed. (A) Comparison of survival curves ($P=1.667$) on LCSS between the patients underwent CT + none RLN removed group and CT + 1 to 3 RLNs removed; (B) comparison of survival curves ($P=0.0629$) on LCSS between the patients underwent CT + none RLN removed group and CT + greater than or equal to 4 RLNs removed; (C) comparison of survival curves ($P=0.3742$) on LCSS between the patients underwent CT + 1 to 3 RLNs removed group and CT + greater than or equal to 4 RLNs removed; (D) comparison of survival curves ($P=0.0682$) on OS between the patients underwent CT + none RLN removed group and CT + 1 to 3 RLNs removed; (E) comparison of survival curves ($P=0.0041$) on OS between the patients underwent CT + none RLN removed group and CT + greater than or equal to 4 RLNs removed; (F) comparison of survival curves ($P=0.2627$) on OS between the patients underwent CT + 1 to 3 RLNs removed group and CT + greater than or equal to 4 RLNs removed. NSCLC, non-small cell lung cancer; CT, adjuvant chemotherapy; RLN, regional lymph node.