

Table S1 Survival rates and median survival time of different treatment groups

Variables	All patients (N=92)	Conservative (N=53)	Interventional (N=39)	P value
Survival rates of 28 days (%)	53 (57.61)	23 (43.40)	30 (76.92)	0.005
Survival rates of 90 days (%)	45 (48.91)	19 (35.85)	26 (66.67)	0.015
Survival rates of 5 years (%)	3 (3.26)	3 (5.66)	0 (0.00)	0.407

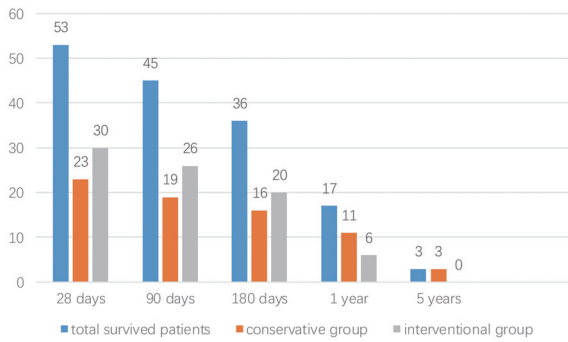


Figure S1 Short-term, mid-term and long-term outcomes of survived postoperative BPF patients' numbers between the two groups (N=92).

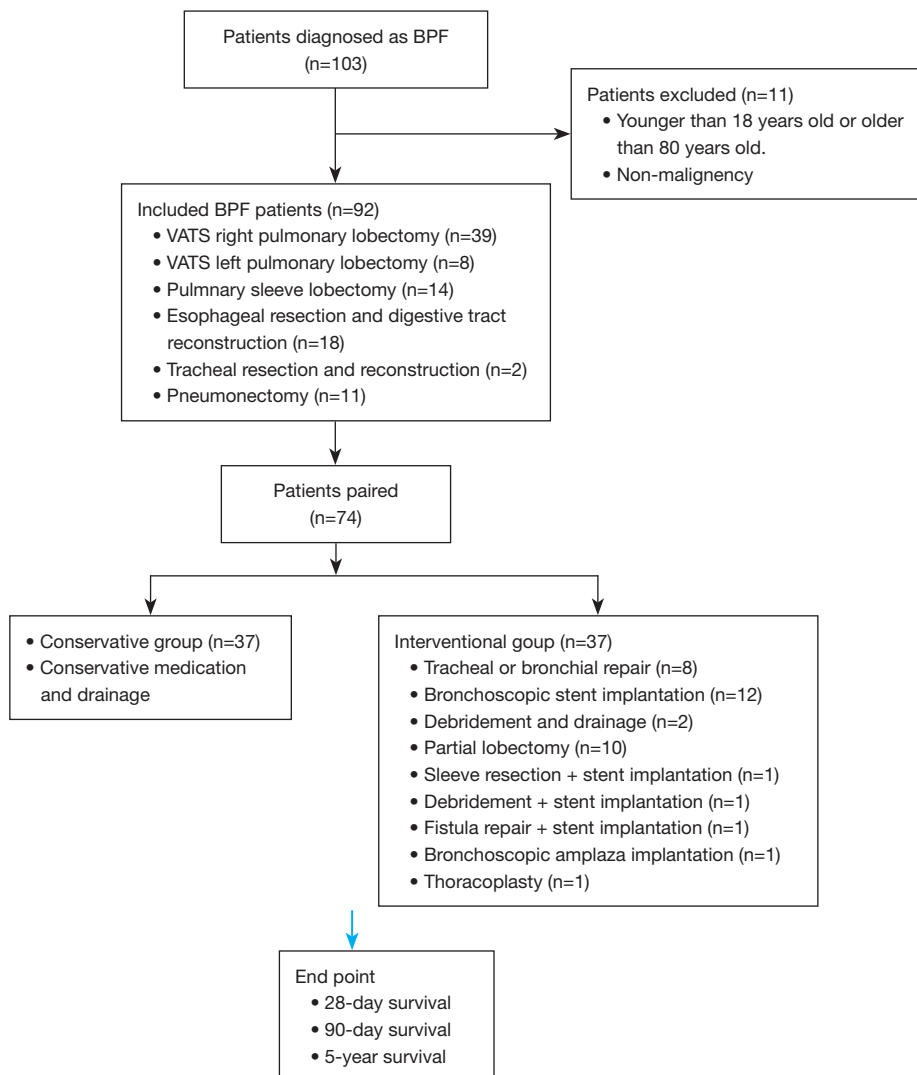


Figure S2 Overall flow chart of this study.