



Figure S1 Pan-cancer analysis of 35 circadian clock gene expression.

Table S1 The primer sequences of circadian clock genes used in quantitative real-time polymerase chain reaction (qRT-PCR) analysis

Gene	Forward primer	Reverse primer
<i>ARNTL</i>	GATGGTTCAGTTTCATGAACC	CCTCTTATCCTGTGGATTCC
<i>CLOCK</i>	TCGGTTTCTCTTCTCCGTCC	GCGCTGCGTGTAGGAAATTA
<i>PER2</i>	GACATGAGACCAACGAAAACGTC	AGGCTAAAGGTATCTGGACTCTG
<i>CRY1</i>	CCGTCTGTTTGTGATTCGTG	AAGTTAGAGGCGGTTGTCCA
<i>CRY2</i>	GGAGGCTGGTGTGGAAGTAG	CGTAGGTCTCGTCGTGGTTC
<i>RNF38</i>	TTCCTTCTTATCGGTTCA	AACTCGTGGTTACAGGGT
<i>MFAP4</i>	GGCTCAGTAAGTTTCTCCGCG	CCAAGTCCACTCGCAGCTCATA
<i>CHD9</i>	ACC CTT AAG GTT TCC ATC TG	TGA AGT TTC TGT ACC TGT TCC
<i>ITPR1</i>	GCACGTCTTCCTGAGAACCA	TGTAAGGCACTTGCTGGTCA
<i>RNASE4</i>	CCAGTGCAAACGCTTCAACA	TGA CAACTCGCCT AGTGCTG
<i>GFOD1</i>	GCCTTCAGTTCCAATCAG	ATAATGTTCTTGTTGTCTT
<i>EPB41L1</i>	AGGAAACCACGCCGAGACACAA	GGTGGATGAGTTTGCTGTTGGG
<i>ETV1</i>	CAGTGTCCCCACTGCATCAT	TGGGGTAGCTGCTATCTGGT
<i>COL4A5</i>	TTCTCCTGAGAGACCGGCTT	AATCCCGGCTGGCTCTAAC
<i>CCR1</i>	CAGCCTTCACTTTCCTCACG	AACGGACAGCTTTGGATTCTT
<i>FHL1</i>	CAGTCAAACCTTCCGCCAT	CAACCATATCCAGCCTTTGC
<i>CDKN1B</i>	CTAACTCTGAGGACACGCATT	TTCTTCTGTTCTGTTGGCTCTT
<i>RNF103</i>	CGCTGATACACGGTTGTGGA	TGCAGATGGAATCGGTCTCG
<i>SEC61G</i>	AAAGGACTCCATTCGGCTGGTT	CAAAGAAGCCAATGAATCCC
<i>PIK3R1</i>	AAGAAGTTGAACGAGTGGTTGG	GCCCTGTTACTGCTCTCCC
<i>CBX7</i>	CAT GGA GCT GTC AGC CAT C	CTG TAC TTT GGG GGC CAT C
<i>SENP2</i>	CATTGGAGCCTGGTGGTGAT	TGTTGAGGAATCTCGTGTGGTT
<i>PSMC4</i>	GGACATCGGAGGCATGGAC	GGTGGGCCATACATGAGGAC
<i>PCYOX1</i>	TGGCATAGAGTGTGCAGCAA	ATCATGTCTGTGTGCCGTT
<i>PLEKHA5</i>	GCAGGCCTATGACTAGCTTCA	TGAGACAAGCATTCTGAGGTGA
<i>RPS6KA5</i>	GGCCCCTTGGCTAAGAGAA	TTGCTGGGCTGCAGTGTCT
<i>RORA</i>	AAAAACATGGAGTCAGCTCCG	AGTGTGGCAGCGGTTTCTA
<i>NFIL3</i>	TGACCGAGGCTCTTACAC	GGAGGATCGGTTGACTTG
<i>LIFR</i>	TGTATGTGGTGACAAAGGAAAA	TGGATTTGGAATATCAGGGTAGA
<i>ZBTB16</i>	GAGCTTCTGATAACGAGGCTG	AGCCGCAAACCTATCCAGGAACC
<i>NPM3</i>	CACCCGCTCCTTACCTTTA	GTTCCGGGCCACAACCTTCTA
<i>MGMT</i>	AACGCTTTGCGTCCCGA	TCCAGTGTGGTGCCTTTCAT
<i>SF3A2</i>	GGAGCTACCTGGCACATACG	CTCCGAGTCTCTGCTTGG
<i>PPFIBP2</i>	GCTGAGATGTGCCTTGAGGT	CACCTGGTGTCTTCCAGAC
<i>TIMELESS</i>	GAGACTTCTGCTCTGAGTTCC	CCAAGGCCACATATAATAGGT

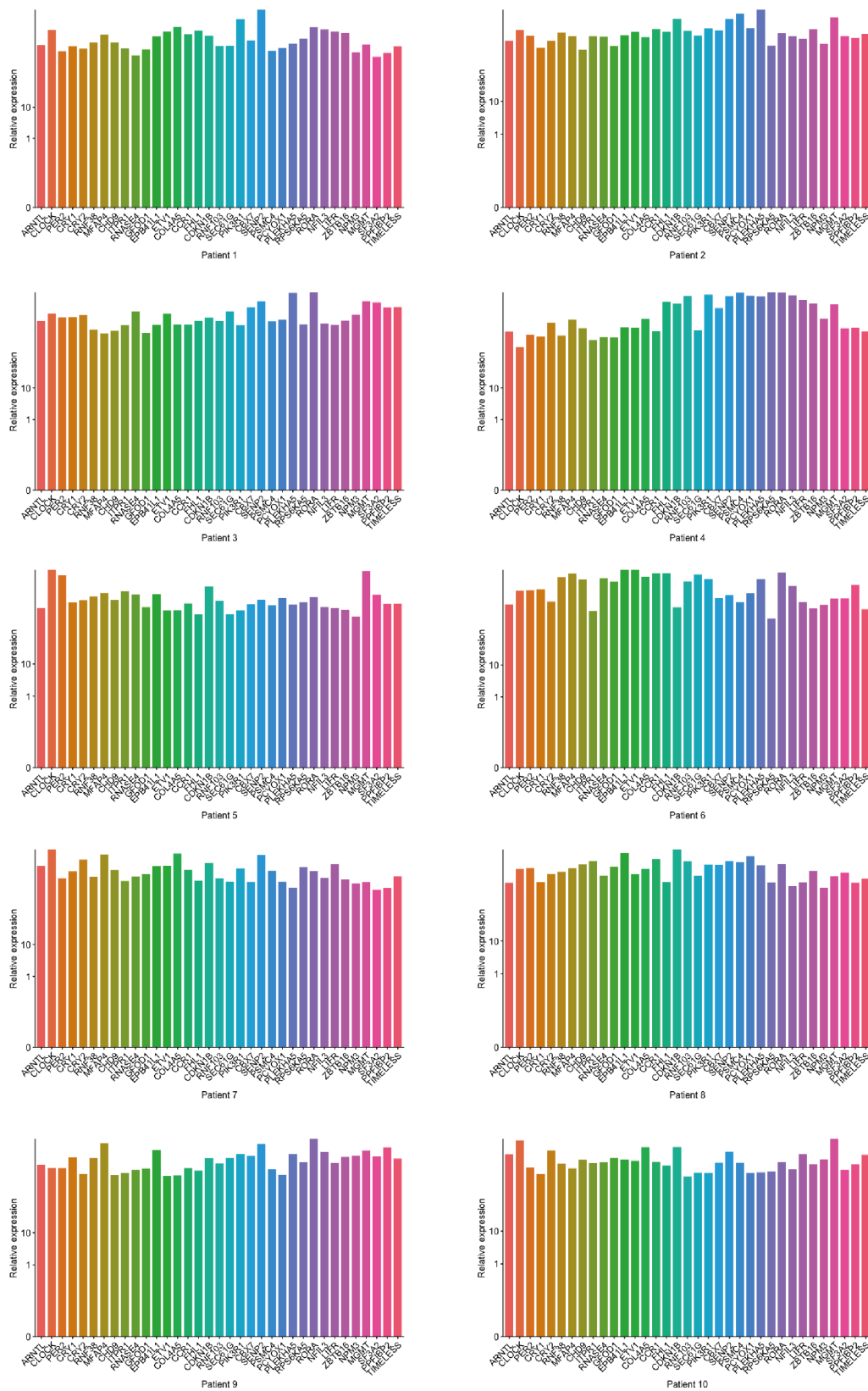


Figure S2 Quantitative real-time polymerase chain reaction (qRT-PCR) data of ten patients with early-stage lung adenocarcinoma.