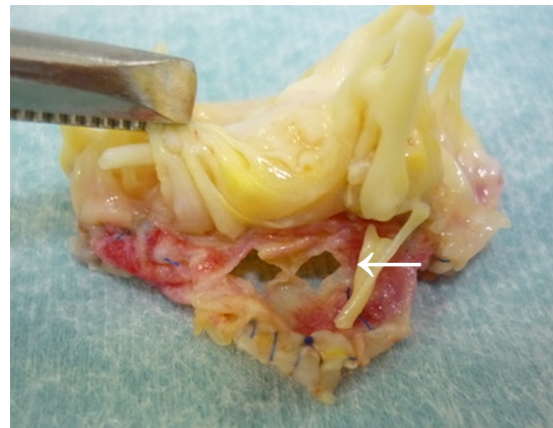


**Figure S1** Intraoperative schema of atrial plication. LAA, left atrial appendage; MV, mitral valve; Rt., right; PV, pulmonary vein; Lt., left.



**Figure S2** Intraoperative image of patch perforation in the posterior leaflet. The image is the view from the LV side. The white arrow indicates perforation on the pericardial patch, not on the sewn portion. LV, left ventricular.

**Table S1** Overall survival rate of patients and freedom from MACEs after hospital discharge in patients who underwent PA *vs.* VR for AFMR analyzed using the Kaplan-Meier method

	Rate at 1 year (95% CI)	Rate at 3 years (95% CI)	Rate at 5 years (95% CI)	P value
Overall survival rate				
PA group	93.8% (0.632–0.991)	93.8% (0.632–0.991)	75.0% (0.245–0.943)	0.878
VR group	100%	100%	50.0% (0.006–0.910)	
Freedom from MACEs after hospital discharge				
PA group	85.7% (0.539–0.962)	75.0% (0.394–0.915)	56.2% (0.164–0.833)	0.181
VR group	64.3% (0.343–0.833)	53.6% (0.233–0.766)	26.8% (0.017–0.652)	
Freedom from readmission for CHF after hospital discharge				
PA group	92.9% (0.591–0.990)	92.9% (0.591–0.990)	69.6% (0.162–0.931)	0.093
VR group	71.4% (0.406–0.882)	61.2% (0.294–0.821)	30.6% (0.017–0.708)	
Freedom from thromboembolic events after hospital discharge				
PA group	92.9% (0.591–0.990)	81.2% (0.415–0.952)	81.2% (0.415–0.952)	0.272
VR group	100%	100%	100%	
Freedom from cardiac reoperation after hospital discharge				
PA group	92.9% (0.591–0.990)	92.9% (0.591–0.990)	92.9% (0.591–0.990)	0.269
VR group	100%	100%	100%	

MACEs, major adverse cardiac events; PA, patch augmentation; VR, valve replacement; AFMR, atrial functional mitral regurgitation; CI, confidence interval; CHF, congestive heart failure.