

Supplementary

Table S1 Sequelae for esophageal cancer and corresponding disability weights from GBD 2019

Sequelae	Health state name	Lay description	Disability weight (95% CI)
Diagnosis and primary therapy phase	Cancer, diagnosis and primary therapy	Has pain, nausea, fatigue, weight loss and high anxiety.	0.288 (0.193-0.399)
Controlled phase	Generic uncomplicated disease: worry and daily medication	Has a chronic disease that requires medication every day and causes some worry but minimal interference with daily activities.	0.049 (0.031-0.072)
Metastatic phase	Cancer, metastatic	Has severe pain, extreme fatigue, weight loss and high anxiety.	0.451 (0.307-0.600)
Terminal phase	Terminal phase, with medication (for cancers, end-stage kidney/liver disease)	Has lost a lot of weight and regularly uses strong medication to avoid constant pain. The person has no appetite, feels nauseous, and needs to spend most of the day in bed.	0.540 (0.377-0.687)

CI, Confidence interval; GBD, Global Burden of Disease.

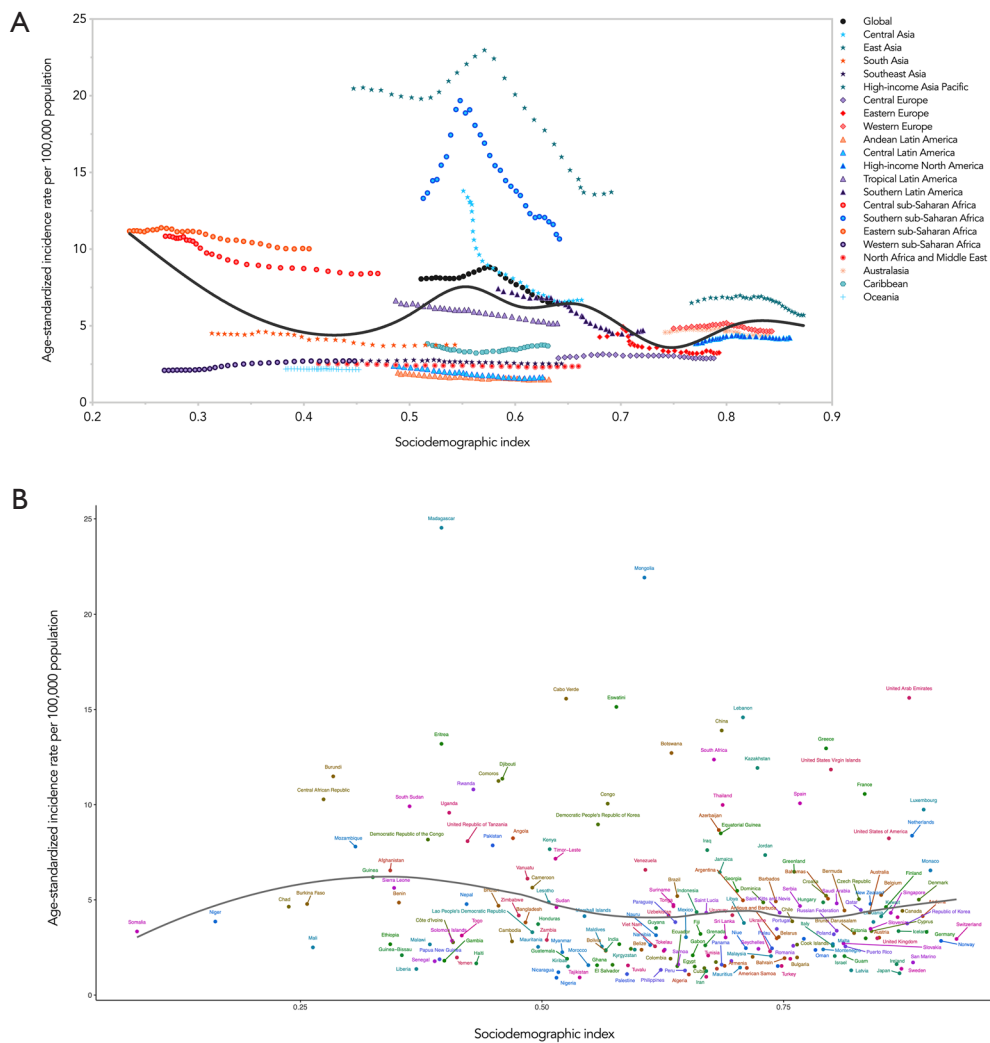


Figure S1 Age-standardized incidence rates of esophageal cancer for 21 GBD regions (A) and 204 countries and territories (B) by SDI, 1990–2019. Expected values based on SDI and disease rates in all locations are shown as the black line. For each region, points from left to right depict estimates from each year from 1990 to 2019. GBD, Global Burden of Diseases, Injuries, and Risk Factors Study; SDI, sociodemographic index.

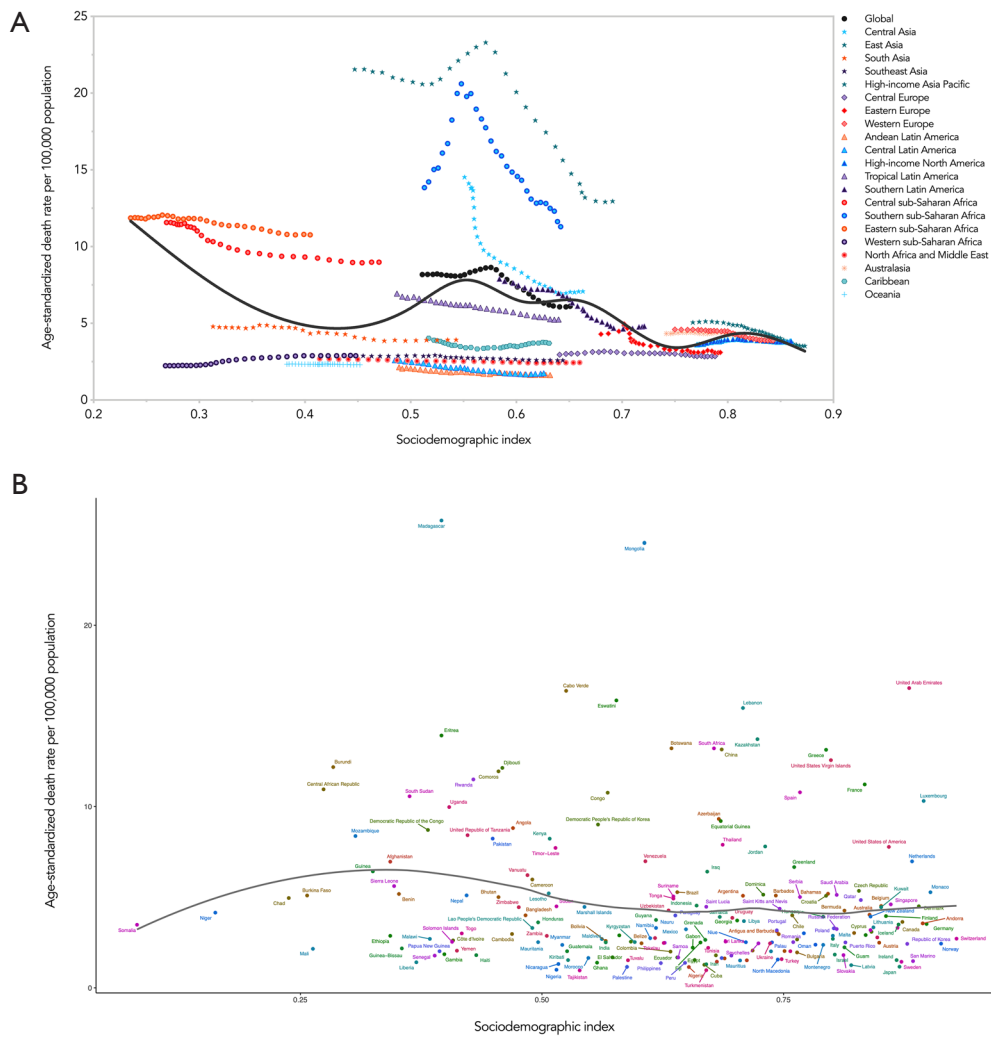


Figure S2 Age-standardized death rates of esophageal cancer for 21 GBD regions (A) and 204 countries and territories (B) by SDI, 1990–2019. Expected values based on SDI and disease rates in all locations are shown as the black line. For each region, points from left to right depict estimates from each year from 1990 to 2019. GBD, Global Burden of Diseases, Injuries, and Risk Factors Study; SDI, sociodemographic index.

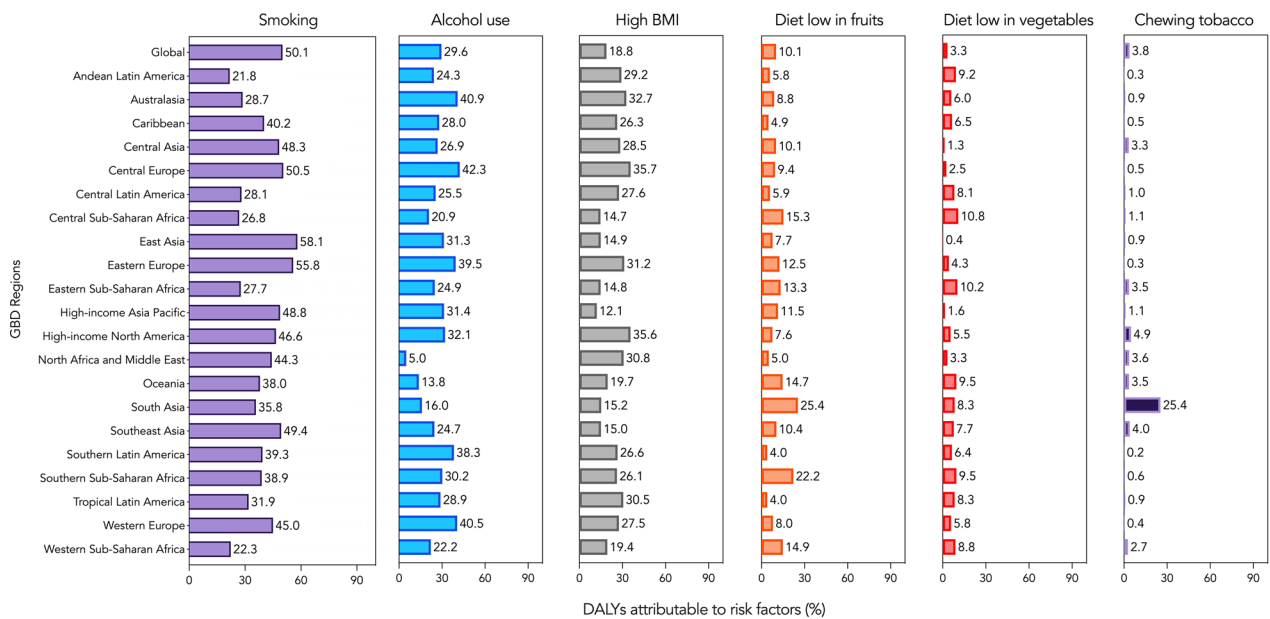


Figure S3 Proportion of esophageal cancer DALYs attributable to risk factors for 21 GBD regions for males, 2019. BMI, body-mass index; DALY, disability-adjusted life-year; GBD, Global Burden of Diseases, Injuries, and Risk Factors Study.

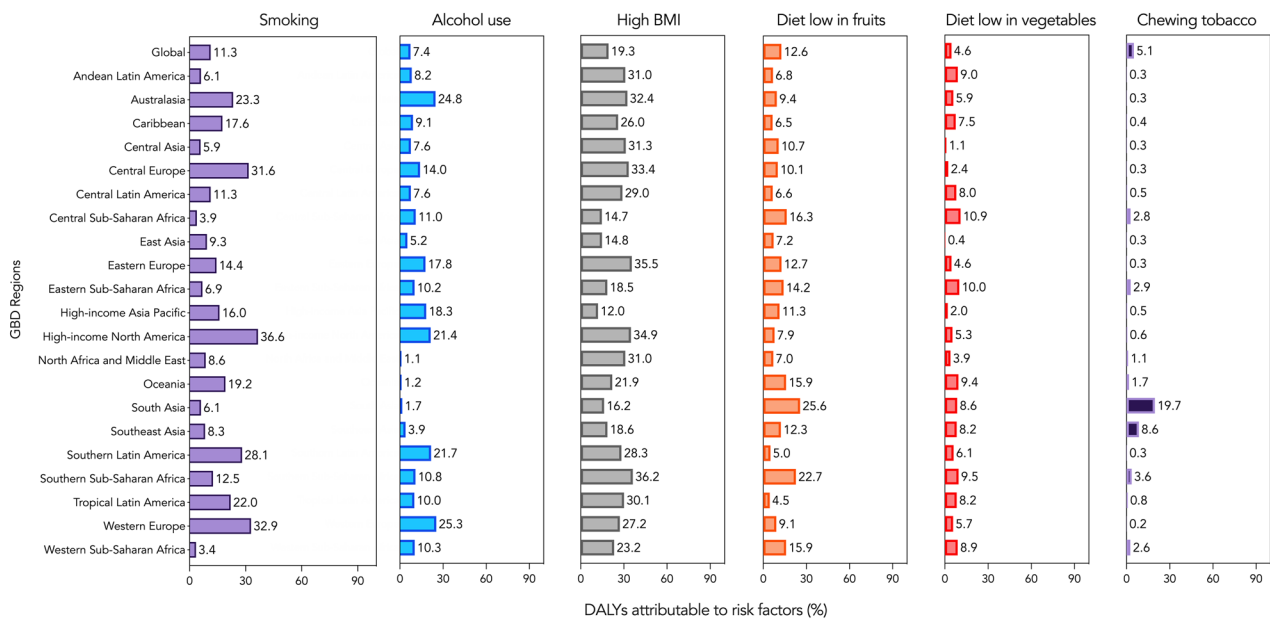


Figure S4 Proportion of esophageal cancer DALYs attributable to risk factors for 21 GBD regions for females, 2019. BMI, body-mass index; DALY, disability-adjusted life-year; GBD, Global Burden of Diseases, Injuries, and Risk Factors Study.

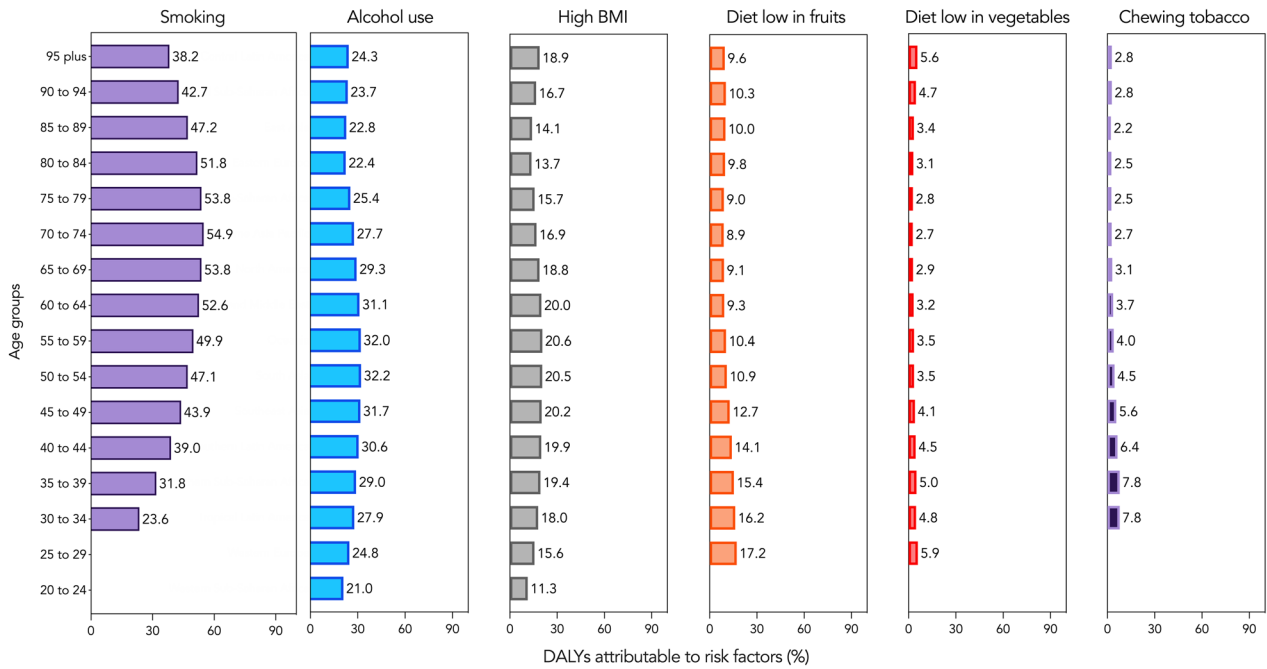


Figure S5 Proportion of esophageal cancer DALYs attributable to risk factors by age for males, 2019. BMI, body-mass index; DALY, disability-adjusted life-year.

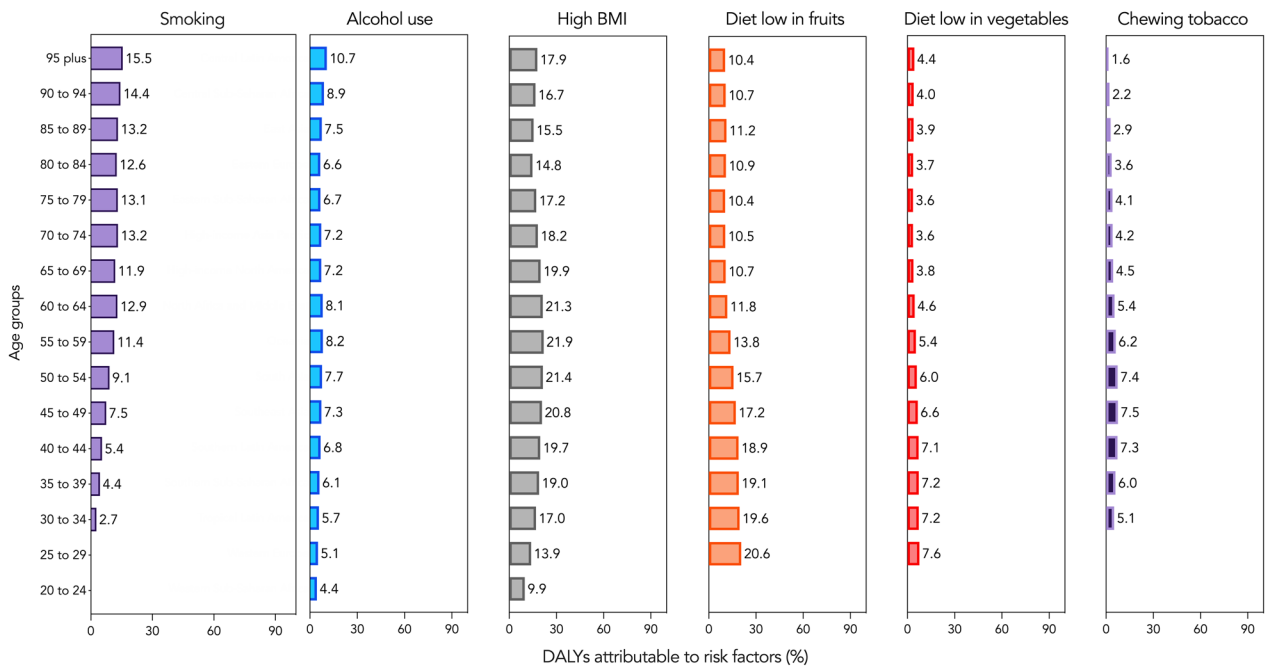


Figure S6 Proportion of esophageal cancer DALYs attributable to risk factors by age for females, 2019. BMI, body-mass index; DALY, disability-adjusted life-year.