

Supplementary

Table S1 The 1-, 2-, 5-year survival rate of OS and CSS in matched population

Survival rate	1-year	2-year	5-year
CSS rate, %			
Surgery	78.90	67.30	49.20
Non-surgery	52.17	35.53	19.17
OS rate, %			
Surgery	74.06	61.01	34.27
Non-surgery	45.72	27.90	11.47

OS, overall survival; CSS, cancer-specific survival.

Table S2 Log-rank test for OS, CSS, and NCSS among non-surgery, non-beneficial & surgery, and beneficial & surgery group in matched population

Group	OS				CSS				NCSS			
	Non-surgery group as reference		Non-beneficial & surgery group as reference		Non-surgery group as reference		Non-beneficial & surgery group as reference		Non-surgery group as reference		Non-beneficial & surgery group as reference	
	HR (95% CI)	P	HR (95% CI)	P	HR (95% CI)	P	HR (95% CI)	P	HR (95% CI)	P	HR (95% CI)	P
Non-surgery	Reference	–	1.09 (0.91–1.32)	0.345	Reference	–	1.05 (0.85–1.28)	0.672	Reference	–	1.28 (0.83–1.97)	0.266
Non-beneficial & surgery	0.91 (0.76–1.10)	0.345	Reference	–	0.96 (0.78–1.18)	0.672	Reference	–	0.78 (0.51–1.20)	0.266	Reference	–
Beneficial & surgery	0.40 (0.36–0.44)	<0.001	0.43 (0.36–0.53)	<0.001	0.34 (0.30–0.38)	<0.001	0.35 (0.28–0.44)	<0.001	0.61 (0.50–0.74)	<0.001	0.78 (0.51–1.20)	0.258

OS, overall survival; CSS, cancer-specific survival; NCSS, non-cancer-specific survival; HR, hazard ratio; CI, confidence interval.

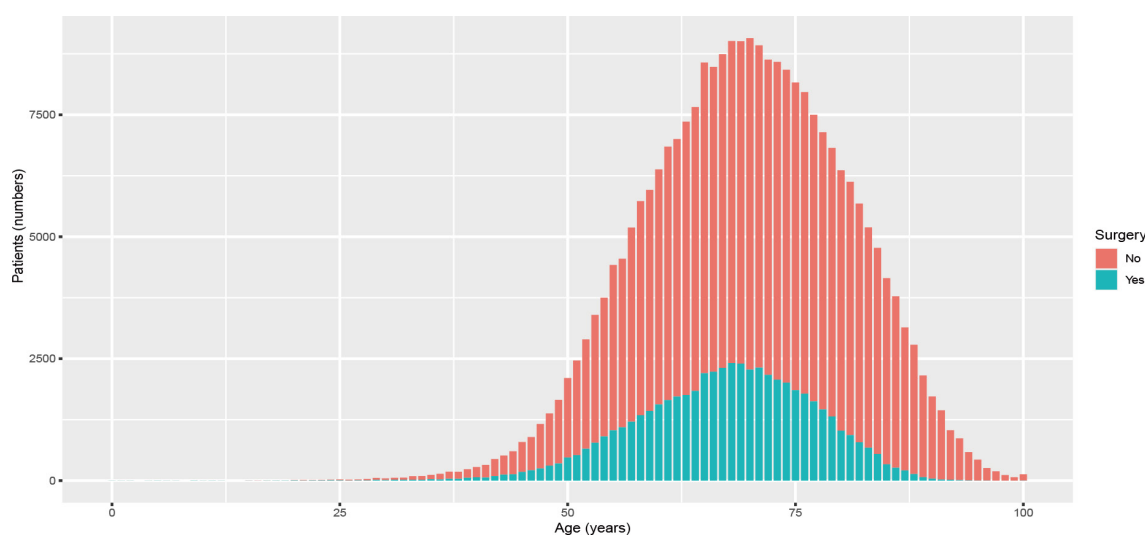


Figure S1 Number of patients underwent pulmonary resection with increase of age.

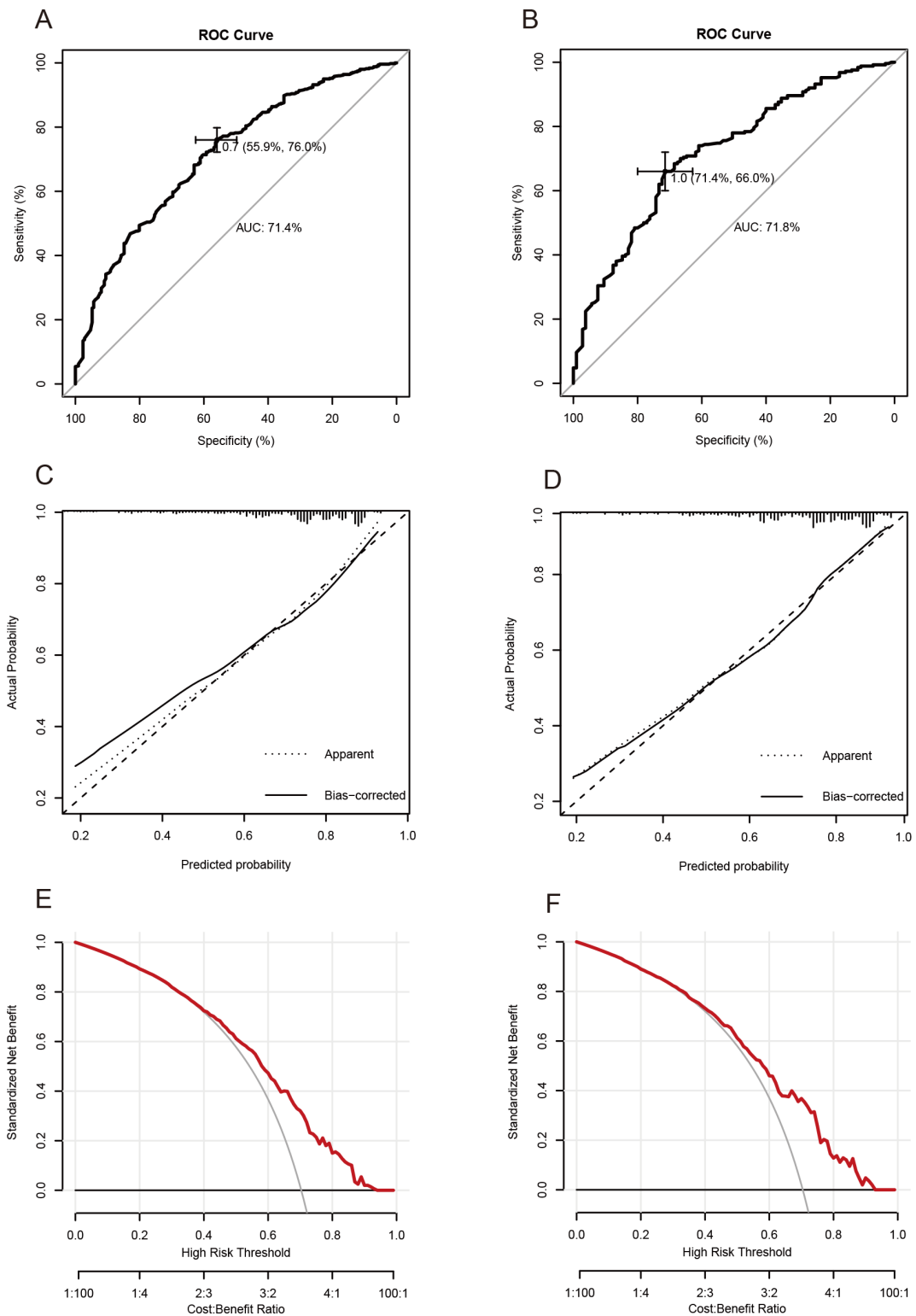


Figure S2 ROC curve (A,B), calibration plots (C,D) and DCA curve (E,F) of our web-based predicted model in the training cohort and validation cohort. AUC, area under the curve; DCA, decision curve analyses; ROC, receiver operating characteristic.

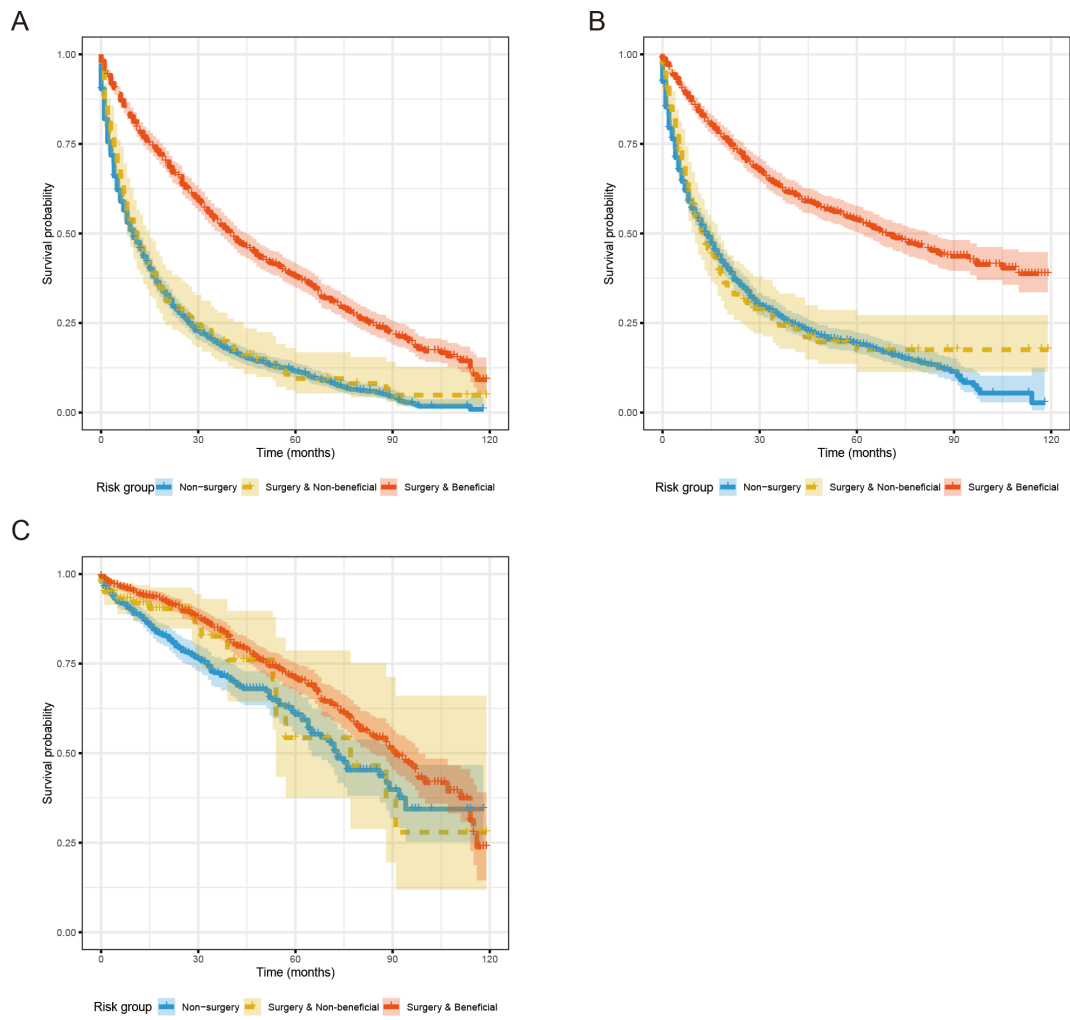


Figure S3 Kaplan-Meier curves for OS (A), CSS (B), and NCSS (C) of patients in the non-surgery, non-beneficial & surgery, and beneficial & surgery group in matched population. OS, overall survival; CSS, cancer-specific survival; NCSS, non-cancer-specific survival.

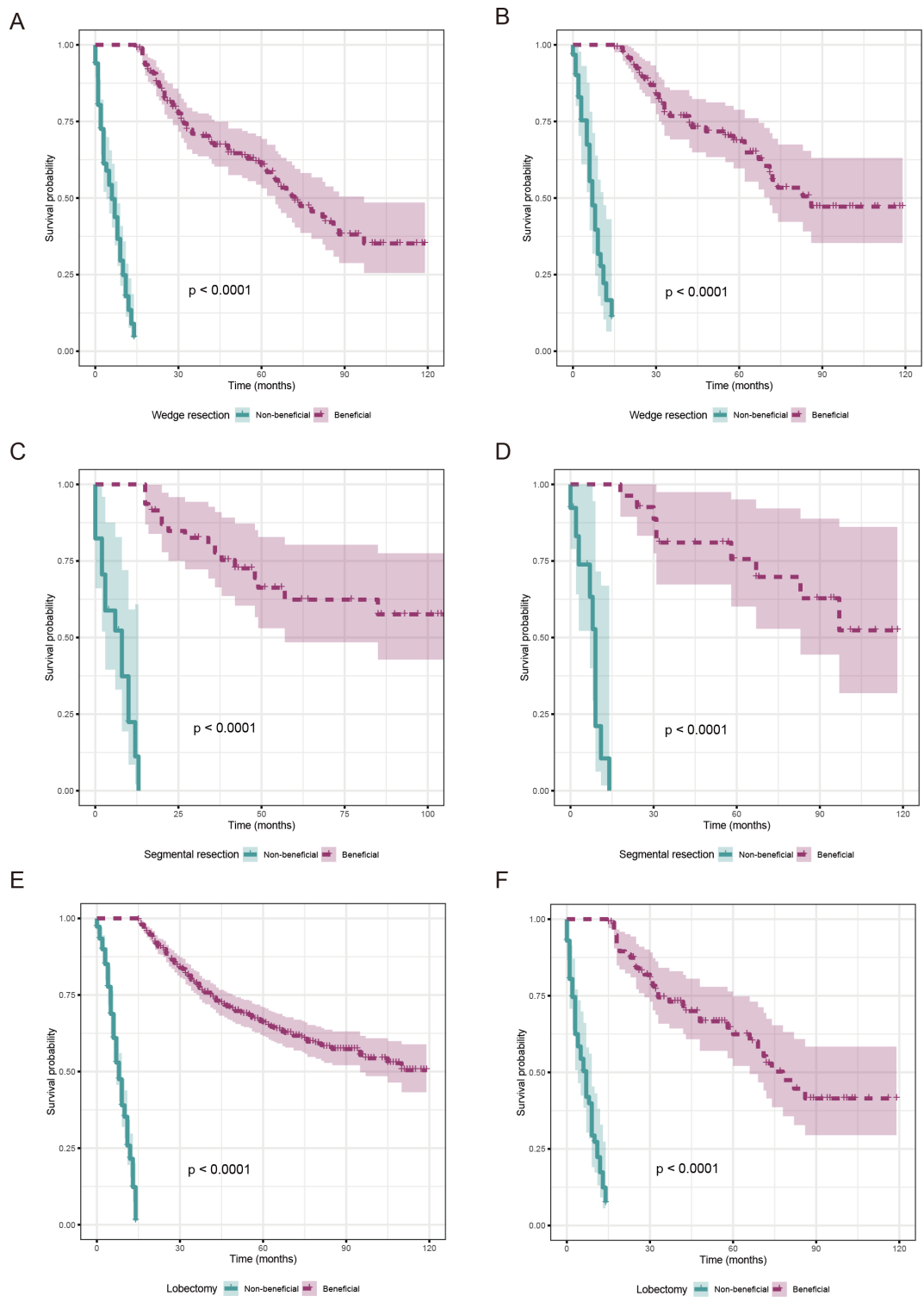


Figure S4 Kaplan-Meier curves for CSS of patients who received wedge resection (A,B), segmental resection (C,D), or lobectomy (E,F) in matched population (A,C,E) and stage I patients (B,D,F). CSS, cancer-specific survival.