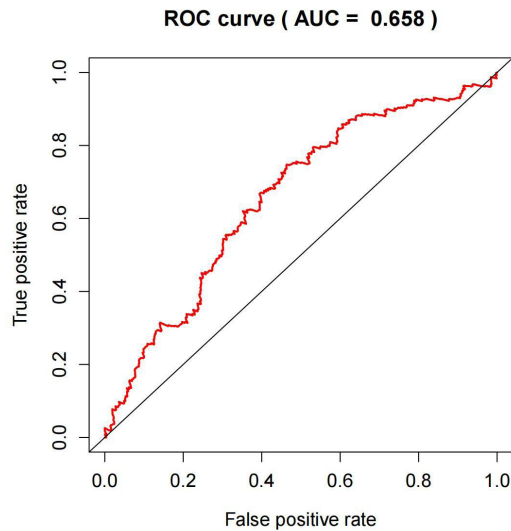
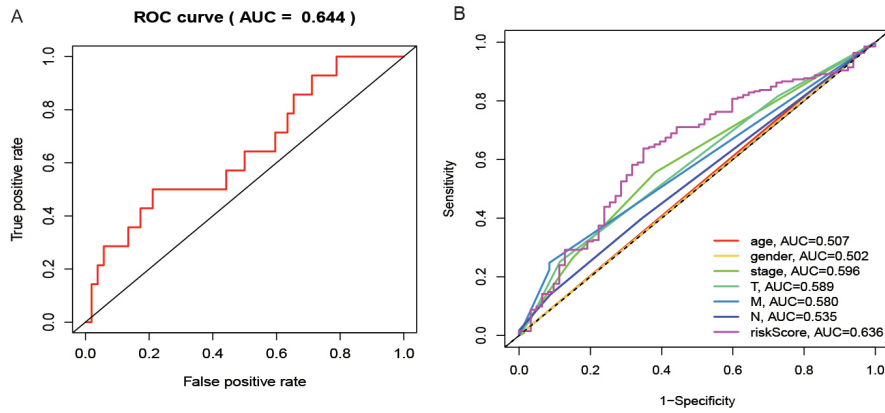


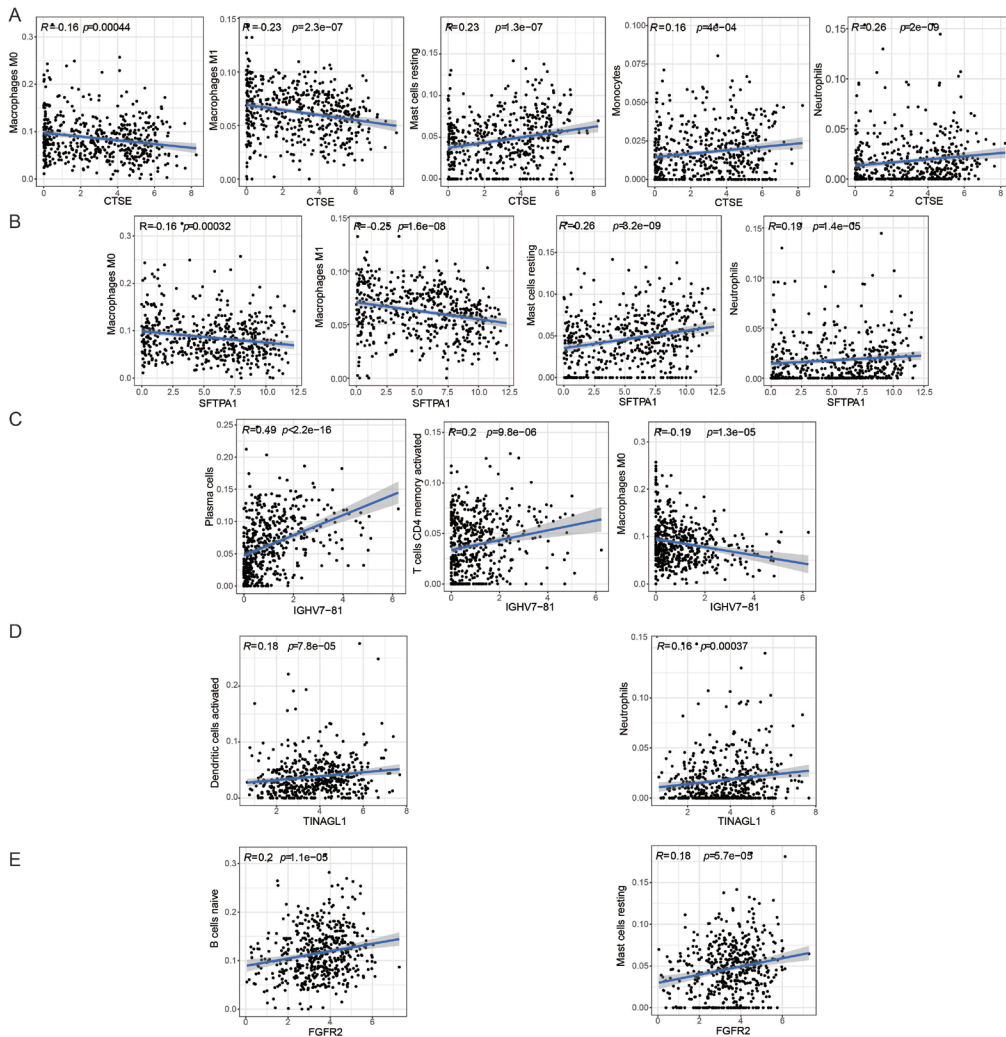
**Figure S1** The relationship between TMB and clinical characteristics. There were no significant differences between TMB and (A) age, (B) gender, (C) metastasis, (D) lymph node metastasis, and (E) tumor. TMB, tumor mutational burden.



**Figure S2** ROC curve to verify the predictive efficiency based on the risk score(TCGA). ROC, receiver operating characteristic; AUC, the area under curve.



**Figure S3** (A) ROC curve to verify the predictive efficiency based on the risk score(GSE37745); (B) ROC curve to verify the predictive efficiency based on the risk score and clinical indicators. ROC, receiver operating characteristic; AUC: the area under curve.



**Figure S4** Correlation between the levels of (A) CTSE, (B) SFTPA1, (C) IGHV7-81, (D)TINAGL1, and (E)FGFR2 and immune cells.