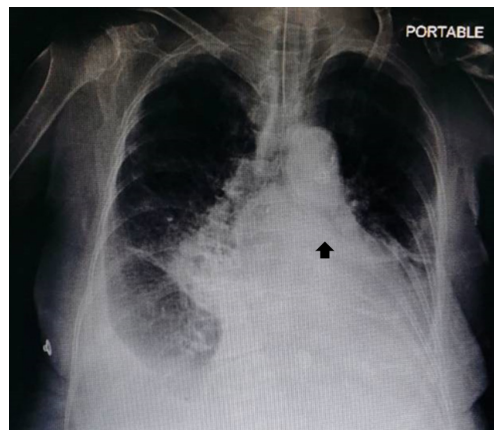
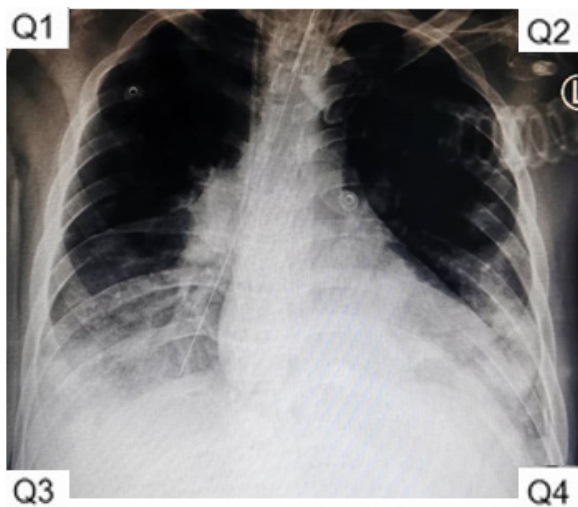


**Figure S1** Position of the polytetrafluoroethylene catheter tip, as indicated by the arrow.



**Figure S2** Position of the nasogastric tube tip, as indicated by the arrow.



Q1: RUL	Q2: LUL
Q3: RLL	Q4: LLL

**Figure S3** Area of CXR involvement. RUL, right upper lobe; LUL, left upper lobe; RLL, right lower lobe; LLL, left lower lobe; CXR, chest X-ray.

**Table S1** Microbiological study of endotracheal aspiration and mini-BAL

Microbial results	Endotracheal aspiration, n (%)	NG tube, n (%)	PTFE, n (%)
Positive	28 (70.0)	31 (77.5)	30 (75.0)
Monomicrobial	20 (50.0)	12 (30.0)	12 (30.0)
Polymicrobial	8 (20.0)	19 (47.5)	18 (45.0)
<i>Actinobacter baumannii</i>	15 (37.5)	16 (40.0)	16 (40.0)
<i>Burkholderia cepacia</i>	2 (5.0)	4* (10.0)	4* (10.0)
<i>Candida albicans</i>	2 (5.0)	5* (12.5)	4* (10.0)
<i>Candida tropicalis</i>	1 (2.5)	4* (10.0)	5* (12.5)
<i>Chryseobacterium gleum</i>	0 (0.0)	1 (2.5)	1 (2.5)
<i>Elizabethkingia meningoseptica</i>	0 (0.0)	1* (2.5)	1* (2.5)
<i>Enterobacter cloacae</i>	1 (2.5)	1 (2.5)	2 (5.0)
<i>Escherichia coli</i>	2 (5.0)	1* (2.5)	2* (5.0)
<i>Klebsiella oxytoca</i>	0 (0.0)	0 (0.0)	1 (2.5)
<i>Klebsiella pneumonia</i>	2 (5.0)	4 (10.0)	3 (7.5)
<i>Providencia stuartii</i>	0 (0.0)	1 (2.5)	1 (2.5)
<i>Pseudomonas aeruginosa</i>	7 (17.5)	8 (20.0)	7 (17.5)
<i>Serratia marcescens</i>	1 (2.5)	1 (2.5)	1 (2.5)
<i>Staphylococcus aureus</i>	1 (2.5)	1 (2.5)	1 (2.5)
<i>Stenotrophomonas maltophilia</i>	3 (7.5)	6* (15.0)	6* (15.0)
No growth	9 (22.5)	7 (17.5)	8 (20.0)
Normal flora	3 (7.5)	2 (5.0)	2 (5.0)

Most show significant growth defined by  $>10^5$  CFU/mL, (+)  $>10^3$  CFU/mL, (\*)  $>10^4$  CFU/mL. BAL, bronchoalveolar lavage; NG, nasogastric; PTFE, polytetrafluoroethylene; CFU, colony-forming units.

**Table S2** Discordant results in 6 patients

Sequence of mini-BAL	Case	NG	PTFE
NG tube suction catheter first	1	<i>Pseudomonas aeruginosa</i>	No growth
	2	<i>Serratia marcescens</i>	<i>Serratia marcescens</i>
		<i>Klebsiella pneumoniae</i> (CRE_MDR)	
PTFE first	3	<i>Candida tropicalis</i>	<i>Candida tropicalis</i>
		<i>Candida albicans</i>	
	4	No growth	<i>Candida tropicalis</i>
			<i>Candida albicans</i>
	5	<i>Candida albicans</i>	No growth
	6	<i>Acinetobacter baumannii</i> (CRAB_MDR)	<i>Acinetobacter baumannii</i> (CRAB_MDR)
<i>Elizabethkingia meningoseptica</i> (MDR)		<i>Enterobacter cloacae</i>	
		<i>Klebsiella oxytoca</i>	
		<i>Escherichia coli</i> (MDR)	

BAL, bronchoalveolar lavage; NG, nasogastric; PTFE, polytetrafluoroethylene; CRE, carbapenem-resistant Enterobacterales; MDR, multidrug resistant; CRAB, carbapenem-resistant *Acinetobacter baumannii*.