

Supplementary

Table S1 Serostatus at lung TPL (n=70)

Serostatus	N (%)
CMV r/d	
-/-	22 (31.4)
-/?	1 (1.4)
-/+	14 (20.0)
?/+	1 (1.4)
+/-	11 (15.7)
+/?	7 (10.0)
+/+	14 (20.0)
EBV r/d	
-/-	2 (2.9)
-/?	2 (2.9)
-/+	9 (12.9)
?/-	1 (1.4)
?/?	1 (1.4)
?/+	2 (2.9)
+/-	3 (4.3)
+/?	16 (22.9)
+/+	34 (48.6)
Toxoplasmosis r/d	
-/-	11 (15.7)
-/?	12 (17.1)
-/+	12 (17.1)
?/ -	3 (4.3)
?/?	3 (4.3)
?/+	2 (2.9)
+/-	9 (12.9)
+/?	12 (17.1)
+/+	5 (7.1)
+/border-line	1 (1.4)

TPL, transplantation; CMV, cytomegalovirus; r, recipient; d, donor; -, negative; ?, unknown; +, positive; EBV, Epstein-Barr virus.

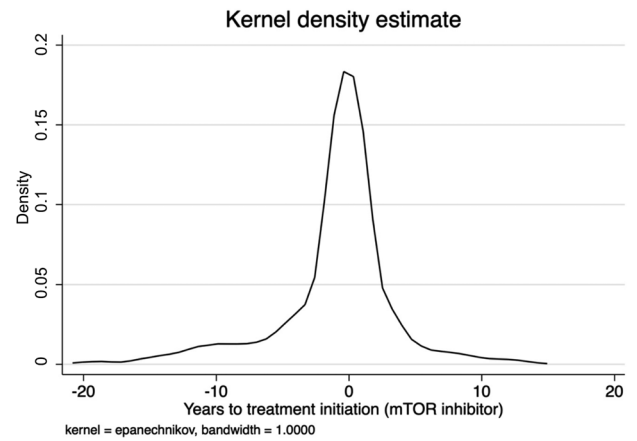


Figure S1 Epanechnikov kernel density estimate on observations before and after treatment initiation. mTOR, mammalian target of rapamycin.