

Table S1 Search strategy in PubMed

No.	Search query	Results
#1	"Carcinoma, Non-Small-Cell Lung"[Mesh]	67,047
#2	"NSCLC"[TW]	56,769
#3	"non-small cell"[TW] OR "nonsmall cell"[TW]	95,587
#4	(lung[TW] OR Pulmonary[TW]) AND (cancer*[TW] OR carcinoma*[TW] OR neoplas*[TW] OR tumor*[TW] OR tumour*[TW])	451,775
#5	#3 AND #4	95,457
#6	#1 OR #2 OR #5	97,583
#7	"N2"[TW]	50,000
#8	#6 AND #7	2,188
#9	"Postoperative Period"[Mesh] OR "Postoperative Complications"[Mesh] OR "Postoperative Care"[Mesh]	695,941
#10	Postoperativ*[TW] OR Post-operativ*[TW] OR "post surg*[TW] OR "post resect*[TW] OR post-pneumonectom*[TW] OR post-lobectom*[TW] OR post-Thoracotom*[TW] OR "after surg*[TW] OR "after resect*[TW] OR "after complete*[TW]	1,140,529
#11	post*[TW] OR after*[TW] OR Complete*[TW]	8,642,822
#12	"Thoracic Surgical Procedures"[Mesh]	367,372
#13	"Lung/surgery"[Mesh]	9,103
#14	"pneumonectomy"[MeSH] OR "thoracotomy"[MeSH]	39,036
#15	Surg*[TW] OR pneumonectom*[TW] OR lobectom*[TW] OR Thoracotom*[TW] OR resect*[TW]	3,626,348
#16	#11 AND (#12 OR #13 OR #14 OR #15)	1,943,315
#17	#9 OR #10 OR #16	2,190,394
#18	"Radiotherapy"[Mesh]	204,047
#19	Radiotherap*[TW] OR "Radiation Therap*[TW] OR "Radiation Treatment*[TW] OR Chemoradiotherap*[TW] OR "Chemo-radiotherap*[TW] OR Radiochemo*[TW] OR Radio-chemo*[TW] OR Radioimmunotherap*[TW]	418,972
#20	#18 OR #19	439,966
#21	#17 AND #20	110,740
#22	"PORT"[TW]	29,464
#23	#21 OR #22	139,319
#24	#8 AND #23	618

Table S2 Search strategy in EMBASE

No.	Search query	Results
#1	'non small cell lung cancer'/exp	198,942
#2	'NSCLC':ab,ti,kw	104,479
#3	('non-small cell*' OR 'nonsmall cell*'):ab,ti,kw	132,819
#4	((lung OR Pulmonary) NEAR/6 (cancer* OR carcinoma* OR neoplas* OR tumor* OR tumour*)):ab,ti,kw	414,807
#5	#3 AND #4	131,542
#6	#1 OR #2 OR #5	218,197
#7	'N2':ab,ti,kw	35,318
#8	#6 AND #7	3,839
#9	'postoperative period'/exp OR 'postoperative care'/exp OR 'postoperative complication'/exp	1,316,878
#10	(Postoperativ* OR Post-operativ* OR 'post surg*' OR 'post resect*' OR post-pneumonectom* OR post-lobectom* OR post-Thoracotom* OR 'after surg*' OR 'after resect*' OR 'after complete*'):ab,ti,kw	1,202,157
#11	(post* OR after* OR Complete*):ab,ti,kw	11,256,948
#12	'thorax surgery'/de	44,083
#13	'lung surgery'/exp	105,145
#14	'pneumonectomy'/exp OR 'thoracotomy'/exp	85,269
#15	(Surg* OR pneumonectom* OR lobectom* OR Thoracotom* OR resect*):ab,ti,kw	3,375,396
#16	#11 AND (#12 OR #13 OR #14 OR #15)	2,006,679
#17	#9 OR #10 OR #16	2,928,078
#18	'radiotherapy'/exp	660,753
#19	(Radiotherap* OR 'Radiation Therap*' OR 'Radiation Treatment*' OR Chemoradiotherap* OR 'Chemo-radiotherap*' OR Radiochemo* OR Radio-chemo* OR Radioimmunotherap*):ab,ti,kw	461,917
#20	#18 OR #19	779,835
#21	#17 AND #20	184,698
#22	'PORT':ab,ti,kw	47,026
#23	#21 OR #22	229,929
#24	#8 AND #23	1,254
#25	#24 AND ([article]/lim OR [article in press]/lim OR [review]/lim)	669

Table S3 Search strategy in Cochrane

No.	Search query	Results
#1	[mh "Carcinoma, Non-Small-Cell Lung"]	4,878
#2	NSCLC:ab,ti,kw	10,781
#3	("non-small cell*" OR "nonsmall cell*"):ab,ti,kw	15,128
#4	((lung OR Pulmonary) NEAR/6 (cancer* OR carcinoma* OR neoplas* OR tumor* OR tumour*)):ab,ti,kw	27,036
#5	#3 AND #4	15,069
#6	#1 OR #2 OR #5	15,797
#7	N2:ab,ti,kw	2,292
#8	#6 AND #7	442
#9	[mh "Postoperative Period"] OR [mh "Postoperative Complications"] OR [mh "Postoperative Care"]	51,374
#10	(Postoperativ* OR Post-operativ* OR "post surg*" OR "post resect*" OR post-pneumonectom* OR post-lobectom* OR post-Thoracotom* OR "after surg*" OR "after resect*" OR "after complete*"):ab,ti,kw	148,297
#11	(post* OR after* OR Complete*):ab,ti,kw	1,050,000
#12	[mh "Thoracic Surgical Procedures"]	16,544
#13	[mh "Lung"/SU]	209
#14	[mh "pneumonectomy"] OR [mh "thoracotomy"]	1,153
#15	(Surg* OR pneumonectom* OR lobectom* OR Thoracotom* OR resect*):ab,ti,kw	298,537
#16	#11 AND (#12 OR #13 OR #14 OR #15)	237,762
#17	#9 OR #10 OR #16	267,608
#18	[mh "Radiotherapy"]	6,696
#19	(Radiotherap* OR "Radiation Therap*" OR "Radiation Treatment*" OR Chemoradiotherap* OR "Chemo-radiotherap*" OR Radiochemo* OR Radio-chemo* OR Radioimmunotherap*):ab,ti,kw	39,878
#20	#18 OR #19	40,182
#21	#17 AND #20	12,698
#22	PORT:ab,ti,kw	3,178
#23	#21 OR #22	15,732
#24	#8 AND #23	185
#25	#24 in review; Trials (excluding WHO ICTRP, CT.gov, Conference paper)	150

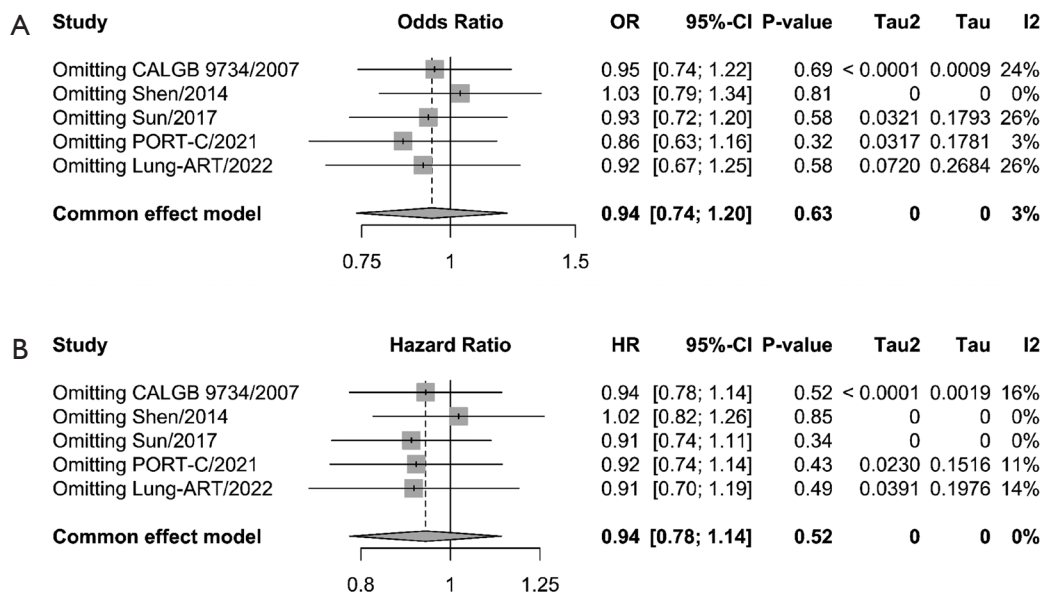


Figure S1 Sensitivity analysis for meta-analysis of disease-free survival (A) and overall survival (B). OR, odds ratio; HR, hazard ratio; CI, confidence interval; CALGB, cancer and Leukemia Group B; PORT-C, postoperative radiotherapy-China; ART, adjuvant radiotherapy.

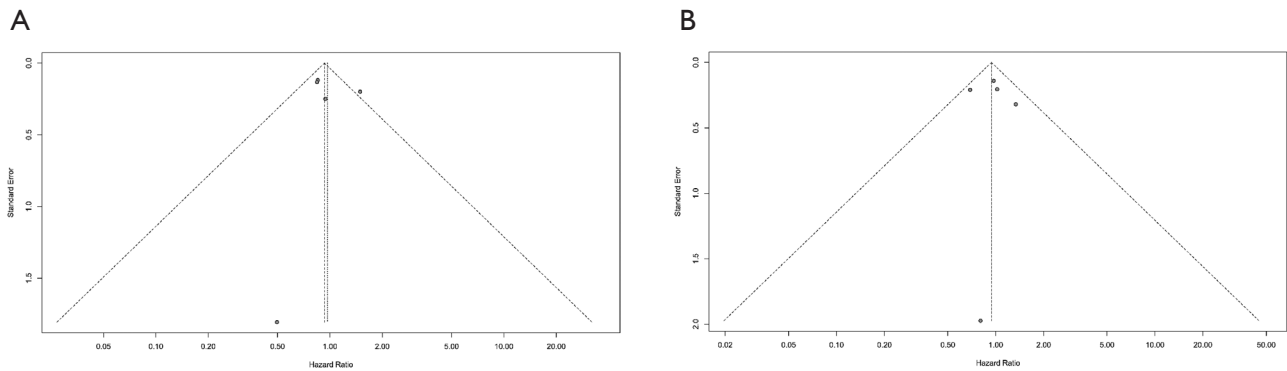


Figure S2 Funnel plot of disease-free survival (A) and overall survival (B).