

Figure S1 OS comparisons based on pathology indicate that the prognosis for patients with different pathologies was notably worse than for those with the same pathology. OS, overall survival.

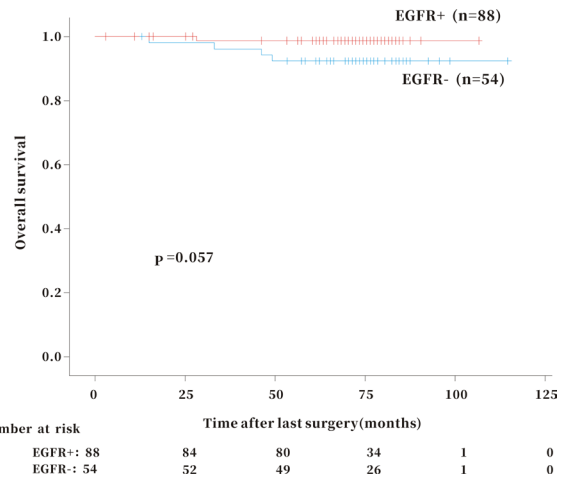


Figure S3 OS comparison based on the presence of an *EGFR* mutation in the largest resected lesion shows that the OS showed no significant difference for patients regardless of whether they had the *EGFR* mutation. *EGFR*, epidermal growth factor receptor; OS, overall survival.

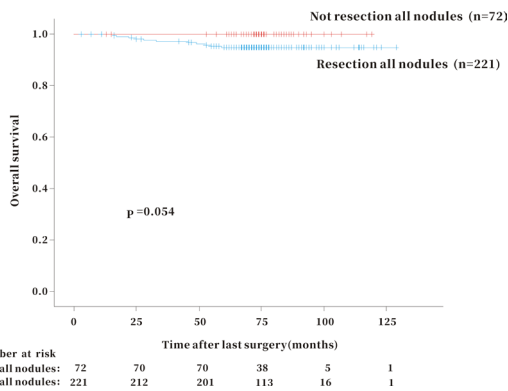


Figure S2 Survival comparison based on whether or not all nodules were removed shows that the OS showed no significant difference for patients, regardless of whether they had all nodules removed. OS, overall survival.

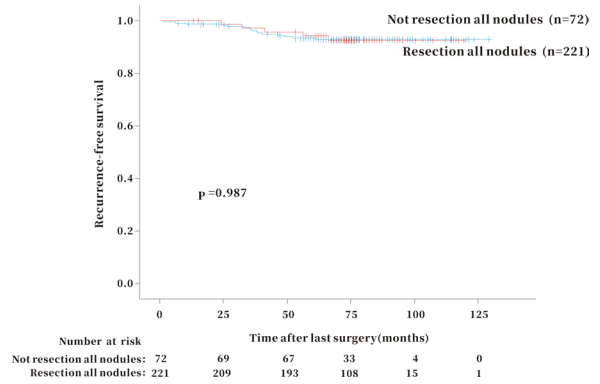


Figure S4 RFS comparison based on whether or not all nodules were removed shows that the RFS showed no significant difference for patients, regardless of whether they had all nodules removed. RFS, recurrence-free survival.