

Supplementary

Table S1 Univariate logistic regression analysis of recipients, donor, and surgical factors as predictors of acute kidney injury stage 3

Variables	OR	95% CI	P value
Recipient factors			
Age (years)	0.98	0.95–1.00	0.09
Female	1.70	0.83–3.51	0.15
BMI (kg/m ²)	1.02	0.95–1.11	0.58
Smoking history	1.31	0.64–2.70	0.46
Hypertension	1.20	0.58–2.46	0.62
Diabetes	0.81	0.37–1.75	0.59
Dialysis	7.76	2.67–22.60	<0.001
Pre-ECMO use	5.69	2.46–13.10	<0.001
Bilateral	2.90	1.20–6.99	0.02
LAS	1.03	1.01–1.05	0.001
Etiology			
ILD	1.05	0.50–2.21	0.89
ARDS (COVID-19)	2.87	1.30–6.33	0.01
COPD	0.56	0.20–1.54	0.26
PAH	0.38	0.08–1.67	0.20
Laboratory			
Hemoglobin (g/dL)	0.88	0.76–1.01	0.07
WBC (1,000/mm ³)	1.05	0.96–1.00	0.69
Platelets (1,000/mm ³)	1.00	0.99–1.00	0.07
Sodium (mEq/L)	1.12	1.00–1.25	0.06
BUN (mg/dL)	1.00	0.96–1.05	0.91
Creatinine (mg/dL)	0.91	0.19–4.30	0.90
eGFR (mL/min/1.73 m ²)	1.00	1.00–1.01	0.47
Total bilirubin (mg/dL)	1.80	1.06–3.05	0.03
PRA	1.70	0.83–3.51	0.15
Arterial blood gas			
pH	9.99	0.05–1900	0.39
PaCO ₂ (mmHg)	0.98	0.94–1.01	0.19
PaO ₂ (mmHg)	1.00	1.00–1.00	0.18
Donor			
Age (years)	1.01	0.98–1.04	0.44
Female	2.76	1.33–5.75	0.007

Table S1 (continued)

Table S1 (continued)

Variables	OR	95% CI	P value
Cause of death			
Anoxia	0.63	0.29–1.36	0.24
Head trauma	1.38	0.67–2.83	0.39
Intra-operative outcomes			
Operative time (hours)	1.49	1.21–1.84	<0.001
Intraoperative blood transfusion; PRBC (packs)	1.13	1.06–1.20	<0.001
Intraoperative blood transfusion; FFP (packs)	1.19	1.07–1.33	0.002
Intraoperative blood transfusion; PLT (packs)	1.51	1.20–1.89	<0.001
Ischemic time (hours)	1.09	0.90–1.33	0.39
VA-ECMO use	2.96	1.23–7.14	0.02
VA-ECMO time (hours)	1.04	0.76–1.42	0.81
Post-operative outcomes			
PGD grade 1 to 3	5.94	2.55–13.80	<0.001
PGD grade 3	32.6	11.9–89.10	<0.001
Dialysis	7,630,000,000	0.00–Inf	>0.99
Stroke	2.44	0.43–13.90	0.31
Bowel ischemia	28,800,000	0.00–Inf.	>0.99
Digital ischemia	88,700,000	0.00–Inf.	>0.99
ICU stay (days)	1.05	1.02–1.07	<0.001
Posttransplant ventilator (days)	1.05	1.02–1.08	0.002
Hospital stay (days)	1.05	1.03–1.07	<0.001
Post-ECMO use	20.6	8.44–50.10	<0.001
CLAD	2.7	0.78–9.33	0.12
HD after discharge	4.81	2.16–10.70	<0.001

OR, odds ratio; CI, confidence interval; BMI, body mass index; ECMO, extracorporeal membrane oxygenation; LAS, lung allocation score; ILD, interstitial lung disease; ARDS, acute respiratory distress syndrome; COVID-19, coronavirus disease 2019; COPD, chronic obstructive pulmonary disease; PAH, pulmonary arterial hypertension; WBC, white blood cell; BUN, blood urea nitrogen; eGFR, estimated glomerular filtration rate; PRA, panel reactive antibody; PaCO₂, partial pressure of arterial carbon dioxide; PaO₂, partial pressure of arterial oxygen; PRBC, packed red blood cells; FFP, fresh frozen plasma; PLT, platelets; VA-ECMO, veno-arterial extracorporeal membrane oxygenation; PGD, primary graft dysfunction; ICU, Intensive Care Unit; CLAD, chronic lung allograft dysfunction; HD, hemodialysis.

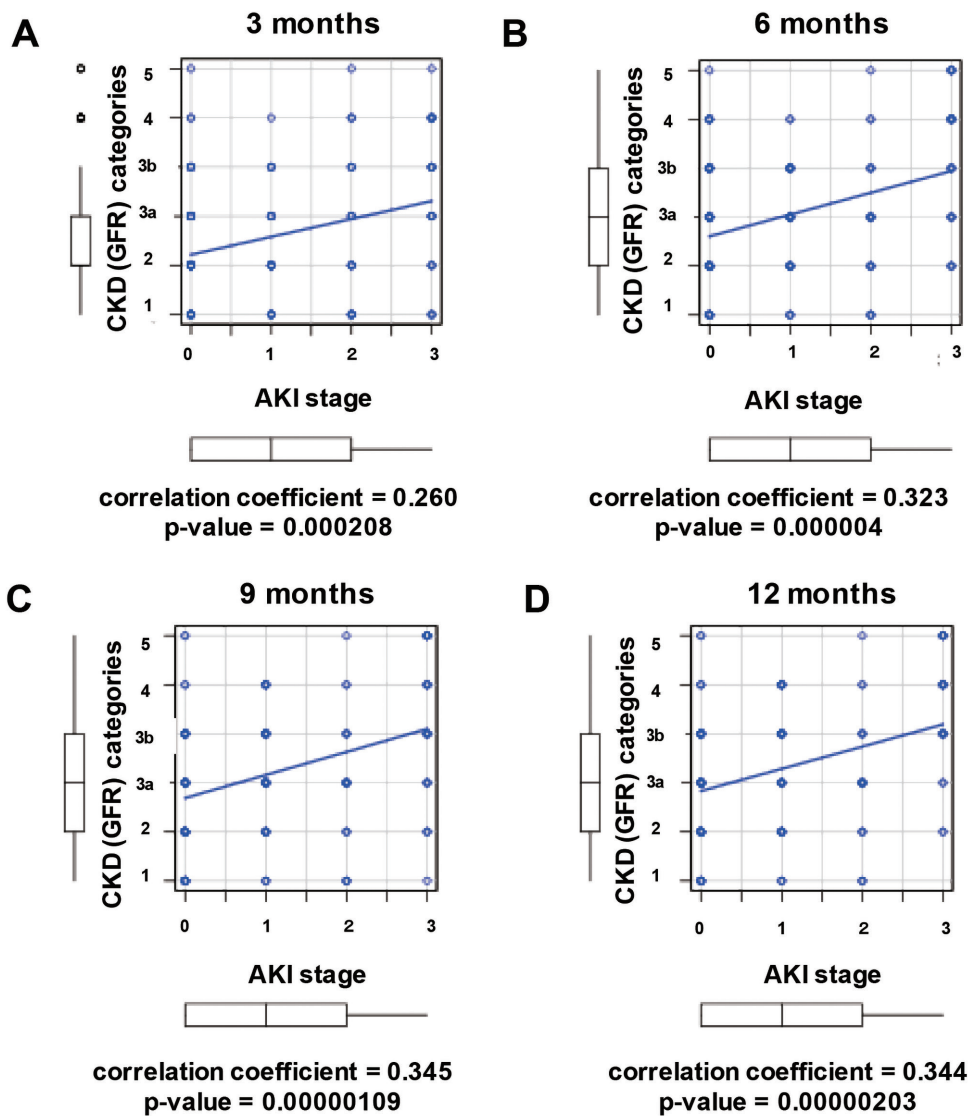


Figure S1 Spearman's test was used to examine the correlation between AKI stage at 3 (A), 6 (B), 9 (C), and 12 (D) months after lung transplantation and GFR category of CKD criteria with missing values assigned using the Last Observation Carried Forward method. AKI, acute kidney injury; CKD, chronic kidney disease; GFR, glomerular filtration rate; m, months.

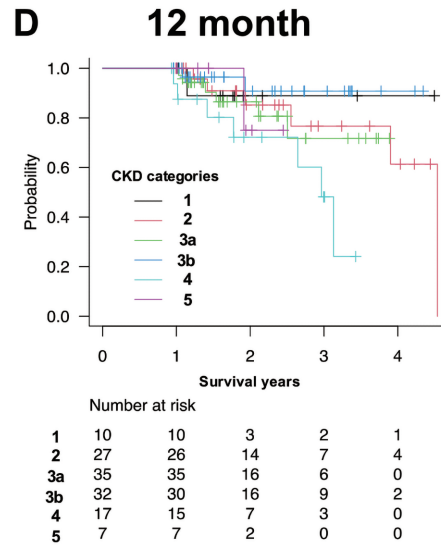
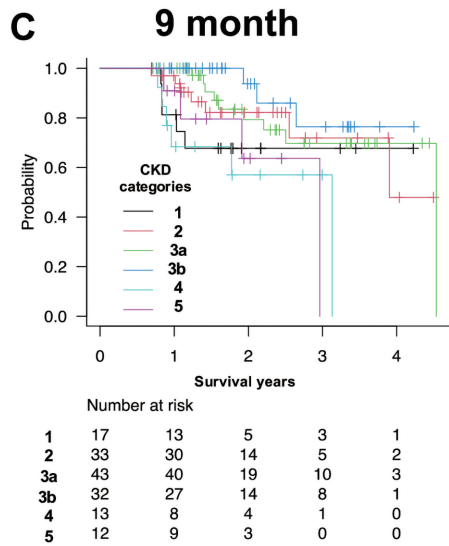
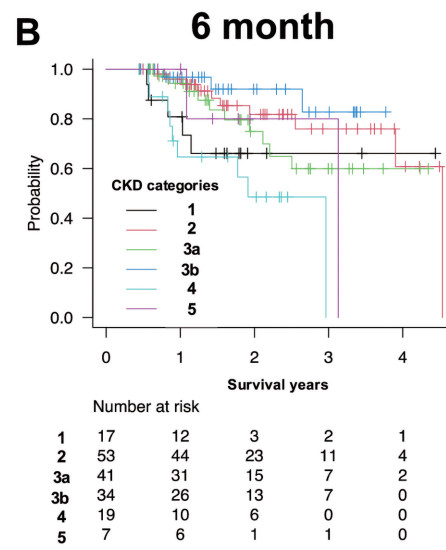
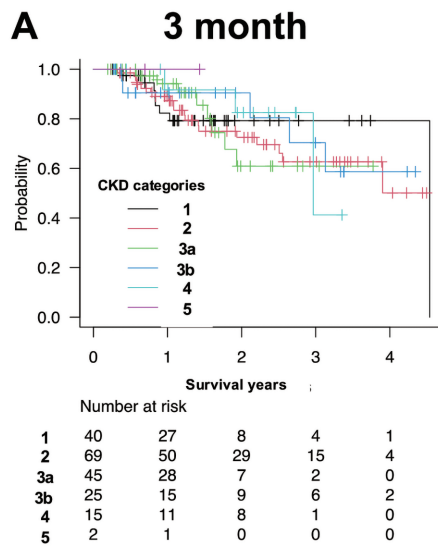


Figure S2 Kaplan-Meier analysis of conditional survival compared to the glomerular filtration rate category of CKD. (A) 3 months, (B) 6 months, (C) 9 months, and (D) 12 months after lung transplantation. CKD, chronic kidney disease.