

Figure S1 Expression of *BEND5* in lung adenocarcinoma cells. (A) *BEND5* protein expression in five individual LUAD cell lines and a human bronchial epithelial cell line. (B) Plasmid transfection increased the level of *BEND5* protein expression. (C) Immune score, stromal score, and ESTIMATE score are correlated with *BEND5* expression in patients with LUAD. *, $P < 0.05$; **, $P < 0.01$; ***, $P < 0.001$. *BEND5*, BEN domain-containing protein 5; NC, negative control; LUAD, lung adenocarcinoma.

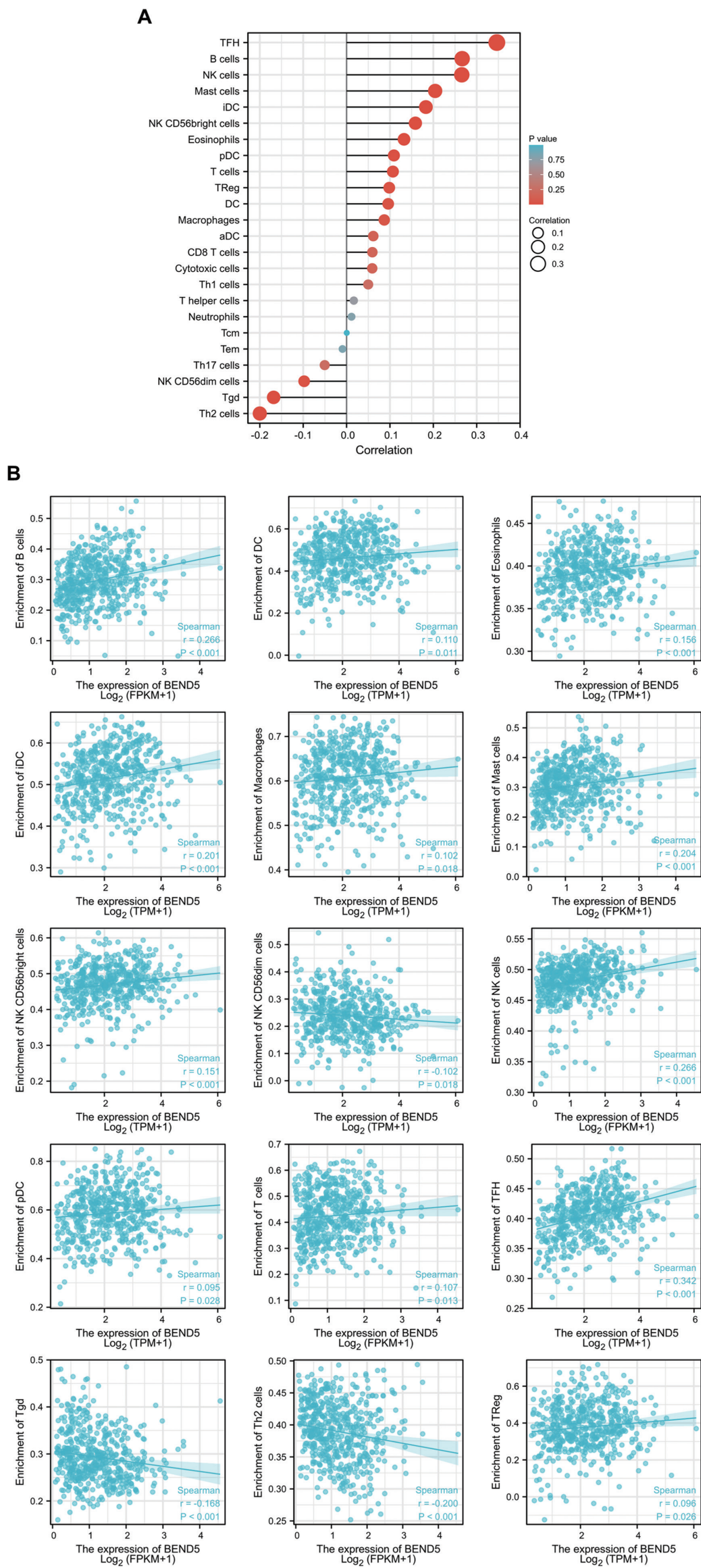


Figure S2 The correlations between *BEND5* expression and TIICs. (A) The correlations between *BEND5* expression and 24 TIICs in LUAD are depicted in a lollipop plot. (B) Significant positive correlations between *BEND5* expression and 12 TIIC types (B cells, DCs, eosinophils, iDCs, macrophages, mast cells, NK cells, NK CD56bright cells, pDCs, T cells, TFH cells and Tregs) and significant negative correlations between *BEND5* expression and 3 TIIC types (NKs CD56dim cells, Tgd and Th2 cells), are shown. TFH, T follicular helper; NK, natural killer; iDCs, immature dendritic cells; pDCs, plasmacytoid dendritic cells; Tregs, T regulatory cells; DCs, dendritic cells; aDCs, activated dendritic cells; TIICs, tumor-infiltrating immune cells; Tcm, T central memory; Tem, T effector memory; Tgd, T gamma delta; *BEND5*, BEN domain-containing protein 5; FPKM, fragments per kilobase of transcript per million mapped reads; TPM, transcript per million; LUAD, lung adenocarcinoma.

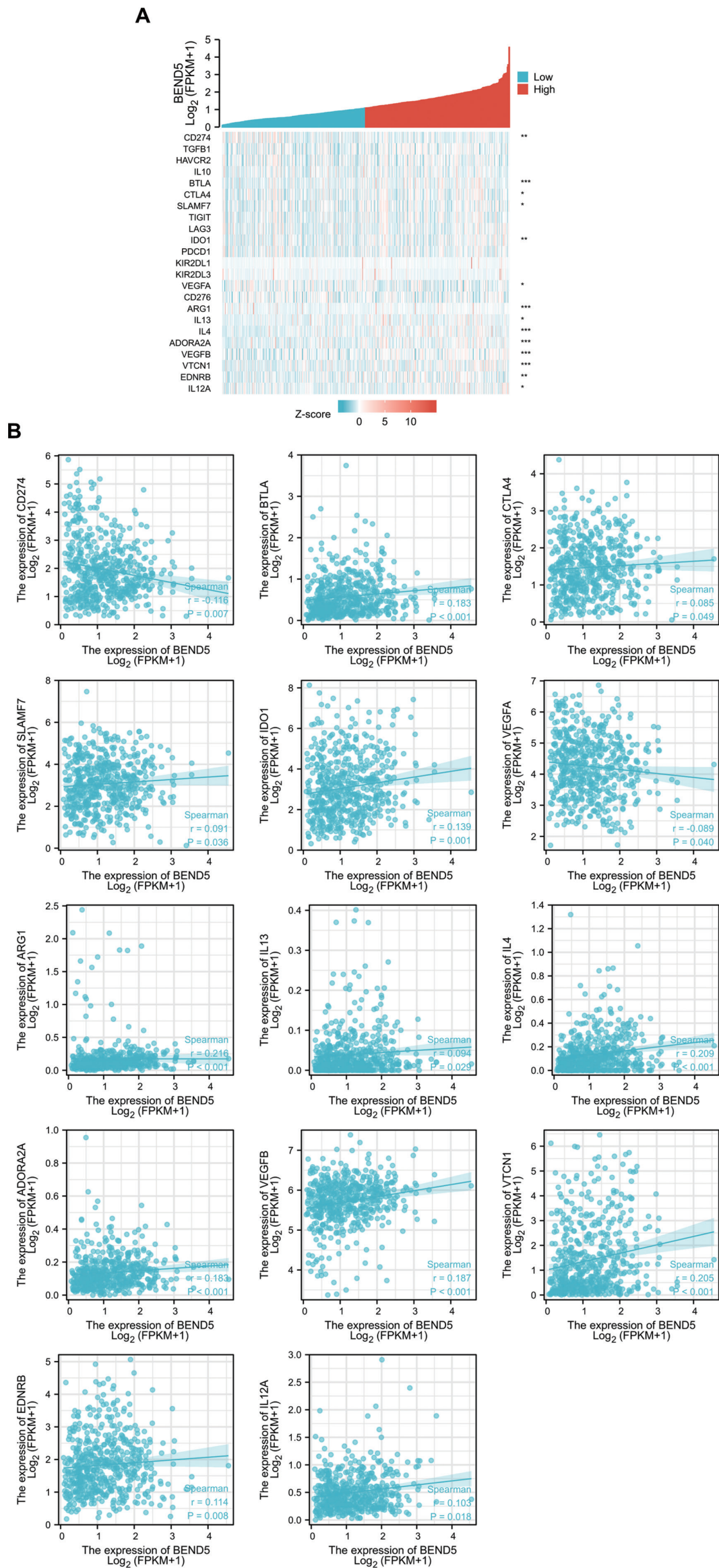


Figure S3 The correlations between *BEND5* expression and 23 checkpoint inhibitor genes in lung adenocarcinoma tumor samples. (A) Heat map indicating the expression patterns of 23 checkpoint inhibitor genes in LUAD. (B) Scatter plots showing positive correlations between *BEND5* expression and BTLA, CTLA4, SLAMF7, IDO1, ARG1, IL13, IL4, ADORA2A, VEGFB, VTCN1, EDNRB, and IL12A, and negative correlations between *BEND5* expression and CD274 and VEGFA. *, $P < 0.05$; **, $P < 0.01$; ***, $P < 0.001$. *BEND5*, BEN domain-containing protein 5; FPKM, fragments per kilobase of transcript per million mapped reads; LUAD, lung adenocarcinoma.

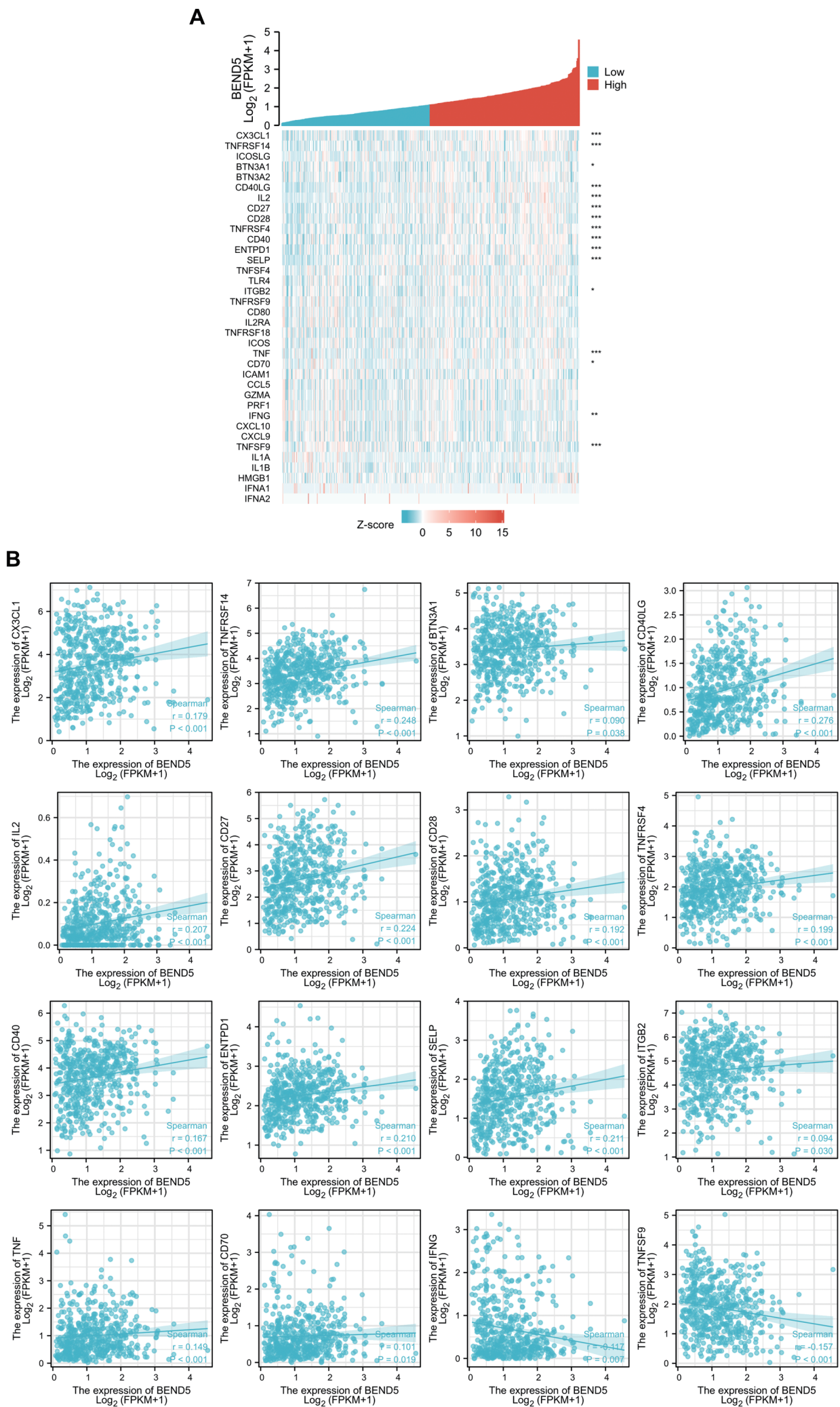


Figure S4 The correlations between *BEND5* expression and 36 checkpoint stimulator genes in lung adenocarcinoma tumor samples. (A) Heat map indicating the expression patterns of 36 checkpoint stimulator genes in LUAD. (B) Scatter plots showing positive correlations between *BEND5* expression and CX3CL1, TNFRSF14, BTN3A1, CD40LG, IL2, CD27, CD28, TNFRSF4, CD40, ENTPD1, SELP, ITGB2, TNF, and CD70, and negative correlations between *BEND5* expression and IFNG and TNFSF9. *, $P < 0.05$; **, $P < 0.01$; ***, $P < 0.001$. *BEND5*, BEN domain-containing protein 5; FPKM, fragments per kilobase of transcript per million mapped reads; LUAD, lung adenocarcinoma.