

Table S1 Treatment strategies of grouping baseline characteristics

Characteristics	The whole cohort, n (%)	Single extrathoracic metastasis, n (%)	Multiple extrathoracic metastasis, n (%)	P value
Sample size	3,892	3,316	576	–
Surgery and chemotherapy				<0.001
None	1,470 (37.8)	1,234 (37.2)	236 (41.0)	
Chemotherapy only	2,000 (51.4)	1,675 (50.5)	325 (56.4)	
Surgery only	170 (4.4)	161 (4.9)	9 (1.6)	
Chemotherapy + surgery	252 (6.5)	246 (7.4)	6 (1.0)	
Surgery and radiotherapy				<0.001
None	1,415 (36.4)	1,214 (36.6)	201 (34.9)	
Radiotherapy only	2,055 (52.8)	1,695 (51.1)	360 (62.5)	
Surgery only	179 (4.6)	173 (5.2)	6 (1.0)	
Radiotherapy + surgery	243 (6.2)	234 (7.1)	9 (1.6)	
Surgery and chemoradiotherapy				<0.001
None	702 (18)	607 (18.3)	95 (16.5)	
Chemoradiotherapy only	1,287 (33.1)	1,068 (32.2)	219 (38.0)	
Surgery only	97 (2.5)	94 (2.8)	3 (0.5)	
Radiotherapy only	768 (19.7)	627 (18.9)	141 (24.5)	
Chemotherapy only	713 (18.3)	607 (18.3)	106 (18.4)	
Surgery + chemotherapy	82 (2.1)	79 (2.4)	3 (0.5)	
Surgery + radiotherapy	73 (1.9)	67 (2.0)	6 (1.0)	
Surgery + chemoradiotherapy	170 (4.4)	167 (5.0)	3 (0.5)	

Table S2 Kaplan-Meier analysis was used to analyze the effects of surgery and chemotherapy, surgery and radiotherapy, surgery and chemoradiotherapy on non-small cell lung cancer patients

Variables	P value		
	Total	Single extrathoracic metastasis	Multiple extrathoracic metastasis
None vs. chemotherapy only	<0.0001	<0.0001	<0.0001
None vs. surgery only	<0.0001	<0.0001	0.013
None vs. surgery and chemotherapy	<0.0001	<0.0001	0.0022
Chemotherapy only vs. surgery only	0.00024	0.0015	0.26
Chemotherapy only vs. surgery and chemotherapy	<0.0001	<0.0001	0.082
Surgery only vs. surgery and chemotherapy	<0.0001	<0.0001	0.41
None vs. radiotherapy only	<0.0001	0.00012	0.18
None vs. surgery only	<0.0001	<0.0001	0.0066
None vs. surgery and radiotherapy	<0.0001	<0.0001	0.28
Radiotherapy only vs. surgery only	<0.0001	<0.0001	0.0090
Radiotherapy only vs. surgery and radiotherapy	<0.0001	<0.0001	0.45
Surgery only vs. surgery and radiotherapy	0.73	0.99	0.11
None vs. chemoradiotherapy only	<0.0001	<0.0001	<0.0001
None vs. surgery only	<0.0001	<0.0001	0.016
None vs. radiotherapy only	0.042	0.029	0.63
None vs. chemotherapy only	<0.0001	<0.0001	<0.0001
None vs. surgery and chemotherapy	<0.0001	<0.0001	0.030
None vs. surgery and radiotherapy	<0.0001	<0.0001	0.17
None vs. surgery and chemoradiotherapy	<0.0001	<0.0001	0.059
Chemoradiotherapy only vs. surgery only	0.0014	0.011	0.086
Chemoradiotherapy only vs. radiotherapy only	<0.0001	<0.0001	<0.0001
Chemoradiotherapy only vs. chemotherapy only	0.45	0.50	0.62
Chemoradiotherapy only vs. surgery and chemotherapy	<0.0001	<0.0001	0.17
Chemoradiotherapy only vs. surgery and radiotherapy	0.18	0.17	0.55
Chemoradiotherapy only vs. surgery and chemoradiotherapy	<0.0001	<0.0001	0.51
Surgery only vs. radiotherapy only	<0.0001	<0.0001	0.049
Surgery only vs. chemotherapy only	0.00029	0.0028	0.081
Surgery only vs. surgery and chemotherapy	0.0034	0.0028	0.95
Surgery only vs. surgery and radiotherapy	0.33	0.56	0.17
Surgery only vs. surgery and chemoradiotherapy	0.011	0.0061	0.47
Radiotherapy only vs. chemotherapy only	<0.0001	<0.0001	<0.0001
Radiotherapy only vs. surgery and chemotherapy	<0.0001	<0.0001	0.059
Radiotherapy only vs. surgery and radiotherapy	<0.0001	<0.0001	0.47

Table S2 (continued)

Table S2 (continued)

Variables	P value		
	Total	Single extrathoracic metastasis	Multiple extrathoracic metastasis
Radiotherapy only vs. surgery and chemoradiotherapy	<0.0001	<0.0001	0.086
Chemotherapy only vs. surgery and chemotherapy	<0.0001	<0.0001	0.17
Chemotherapy only vs. surgery and radiotherapy	0.082	0.081	0.67
Chemotherapy only vs. surgery and chemoradiotherapy	<0.0001	<0.0001	0.47
Surgery and chemotherapy vs. surgery and radiotherapy	<0.0001	0.00028	0.28
Surgery and chemotherapy vs. surgery and chemoradiotherapy	0.33	0.37	0.67
Surgery and radiotherapy vs. surgery and chemoradiotherapy	0.00010	0.00054	0.46

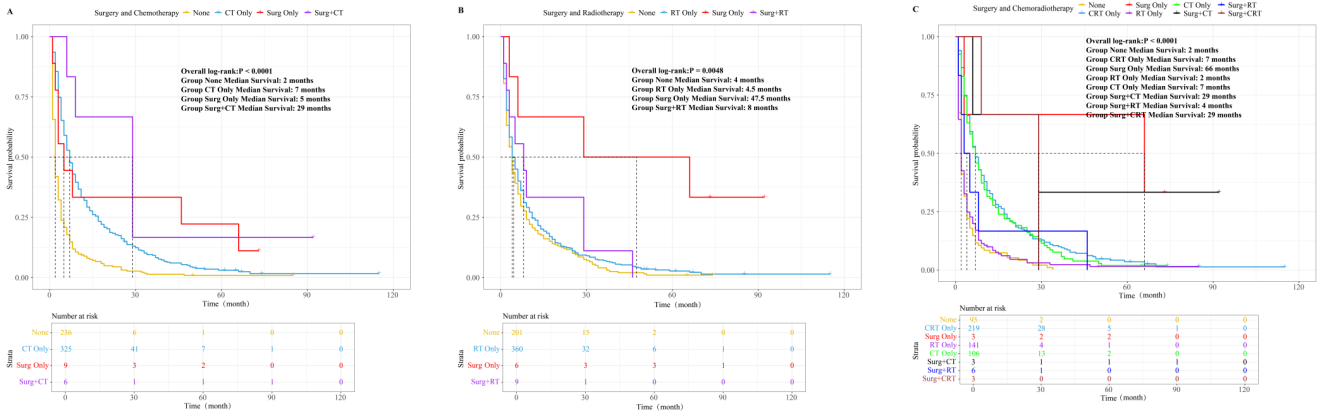


Figure S1 The survival curves of different treatment in patients with multiple extrathoracic metastasis. (A) Surgery combined with chemotherapy. (B) According to the surgery combined with radiotherapy. (C) Surgery combined with radiotherapy and chemotherapy. None, no surgery or chemotherapy or radiotherapy was performed; CT only, chemotherapy only; Surg only, only to have surgery; Surg + CT, surgery combined with chemotherapy; RT only, radiotherapy only; Surg + RT, surgery combined with radiotherapy; CRT only, chemotherapy combined with radiotherapy only; Surg + CRT, surgery combined with radiotherapy and chemotherapy.