

Table S1 Changes over time in the ratio of the affected side to the healthy side of the postoperative pulmonary blood flow distribution

Surgical procedures	Preoperative	1POM	3POM	6POM	12POM
RUL (%)	0.537±0.029	0.440±0.052	0.458±0.045	0.465±0.047	0.475±0.059
RML (%)	0.546±0.013	0.485±0.092	0.468±0.097	0.505±0.066	0.507±0.056
RLL (%)	0.536±0.035	0.440±0.032	0.456±0.036	0.470±0.035	0.477±0.027
Right side (%)	0.537±0.029	0.445±0.053	0.459±0.048	0.470±0.047	0.479±0.052
LUL (%)	0.444±0.023	0.332±0.041	0.321±0.047	0.329±0.050	0.330±0.046
LLL (%)	0.458±0.033	0.327±0.077	0.356±0.036	0.362±0.042	0.374±0.045
Left side (%)	0.450±0.028	0.330±0.055	0.336±0.045	0.342±0.049	0.346±0.050

This table presents the corresponding numerical values at each time point, represented as mean ± standard deviation, depicting the changes in the affected BFR following each lobectomy, as illustrated in Figure 2. POM, postoperative months; RUL, right upper lobectomy; RML, right middle lobectomy; RLL, right lower lobectomy; LUL, left upper lobectomy; LLL, left lower lobectomy; BFR, blood flow ratio.

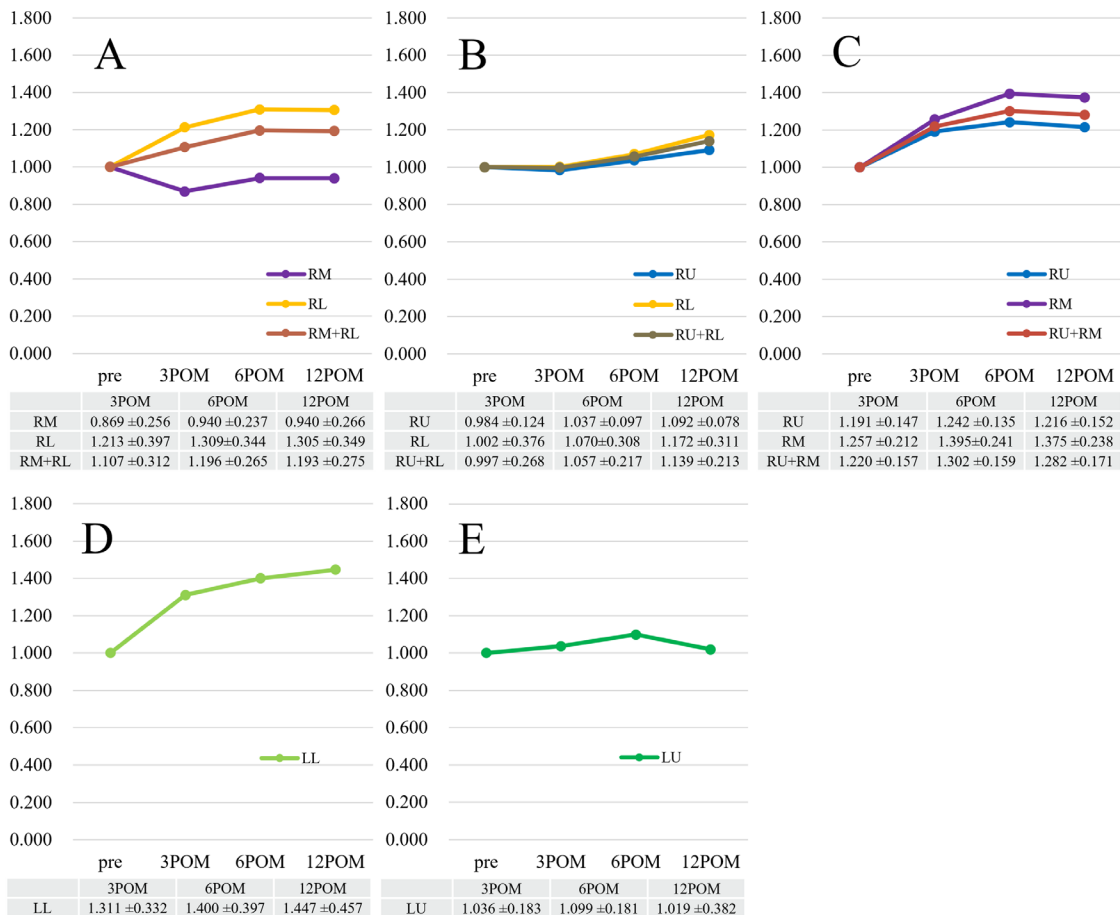


Figure S1 Transition of changes in FLVR of residual lung lobes in affected side after each lobectomy. Each line graph shows the following postoperative results: (A) RUL, (B) RML, (C) RLL, (D) LUL, and (E) LLL. The sum of the remaining two lobes is also presented, particularly for right-sided surgeries. RM, right middle lobe; RL, right lower lobe; pre, preoperative; POM, postoperative months; RU, right upper lobe; LL, left lower lobe; LU, left upper lobe; FLVR, functional lung volume ratio; RUL, right upper lobectomy; RML, right middle lobectomy; RLL, right lower lobectomy; LUL, left upper lobectomy; LLL, left lower lobectomy.

Table S2 Changes over time in the ratio of the affected side to the healthy side of the postoperative FLV

Surgical procedures	Preoperative	3POM	6POM	12POM
RUL (%)	0.536±0.022	0.431±0.053	0.450±0.049	0.459±0.049
RML (%)	0.540±0.039	0.475±0.119	0.484±0.092	0.494±0.068
RLL (%)	0.541±0.026	0.427±0.029	0.445±0.027	0.449±0.027
Right side (%)	0.537±0.024	0.435±0.055	0.452±0.049	0.460±0.047
LUL (%)	0.452±0.016	0.319±0.040	0.332±0.042	0.335±0.044
LLL (%)	0.450±0.014	0.319±0.033	0.331±0.030	0.339±0.030
Left side (%)	0.451±0.015	0.319±0.036	0.332±0.037	0.337±0.038

This table presents the corresponding actual values at each time point, represented as mean ± standard deviation, depicting the changes in the affected FLVR after each lobectomy, as illustrated in *Figure 4*. FLV, functional lung volume; POM, postoperative months; RUL, right upper lobectomy; RML, right middle lobectomy; RLL, right lower lobectomy; LUL, left upper lobectomy; LLL, left lower lobectomy; FLVR, functional lung volume ratio.

Table S3 Temporal evolution of ELW and FLV change rates in the residual left lower lobe following LUL

Parameters	Preoperative	3POM	6POM	12POM
RT_ELW	1.000±0.000	1.056±0.075	1.038±0.051	1.042±0.054
LL_ELW	1.000±0.000	1.273±0.175	1.318±0.213	1.318±0.213
RT_FLV	1.000±0.000	1.060±0.075	1.053±0.072	1.071±0.095
LL_FLV	1.000±0.000	1.300±0.332	1.400±0.397	1.447±0.457

This table presents the corresponding actual values at each time point, represented as mean ± standard deviation, depicting the FLV and ELW changes rate in the residual left lower lobe following LUL, as shown in *Figure 5*. ELW, estimated lung weight; FLV, functional lung volume; LUL, left upper lobectomy; POM, postoperative months; RT, right lung; LL, left lower lobe.