

Table S1 Detailed search strategy for PubMed database

| Search term category | MeSH terms | Free text terms | Filters applied |
|-------------------------------------|------------------------------------|---|--|
| COPD-related terms | "COPD" | "chronic obstructive pulmonary disease" | Publication Date: January 1, 1999, to May 31, 2024 Language: English Article types: peer-reviewed journal articles |
| Extrapulmonary manifestations terms | "muscle" | "muscle" | |
| | "adipose tissue" | "adipose tissue" | |
| | "coronary artery calcification" | "coronary artery calcification" | |
| | "bone density" | "bone density" | |
| CT-related terms | "Quantitative Computed Tomography" | "Computed Tomography" | |
| | | "CT" | |

CT, computed tomography; COPD, chronic obstructive pulmonary disease.

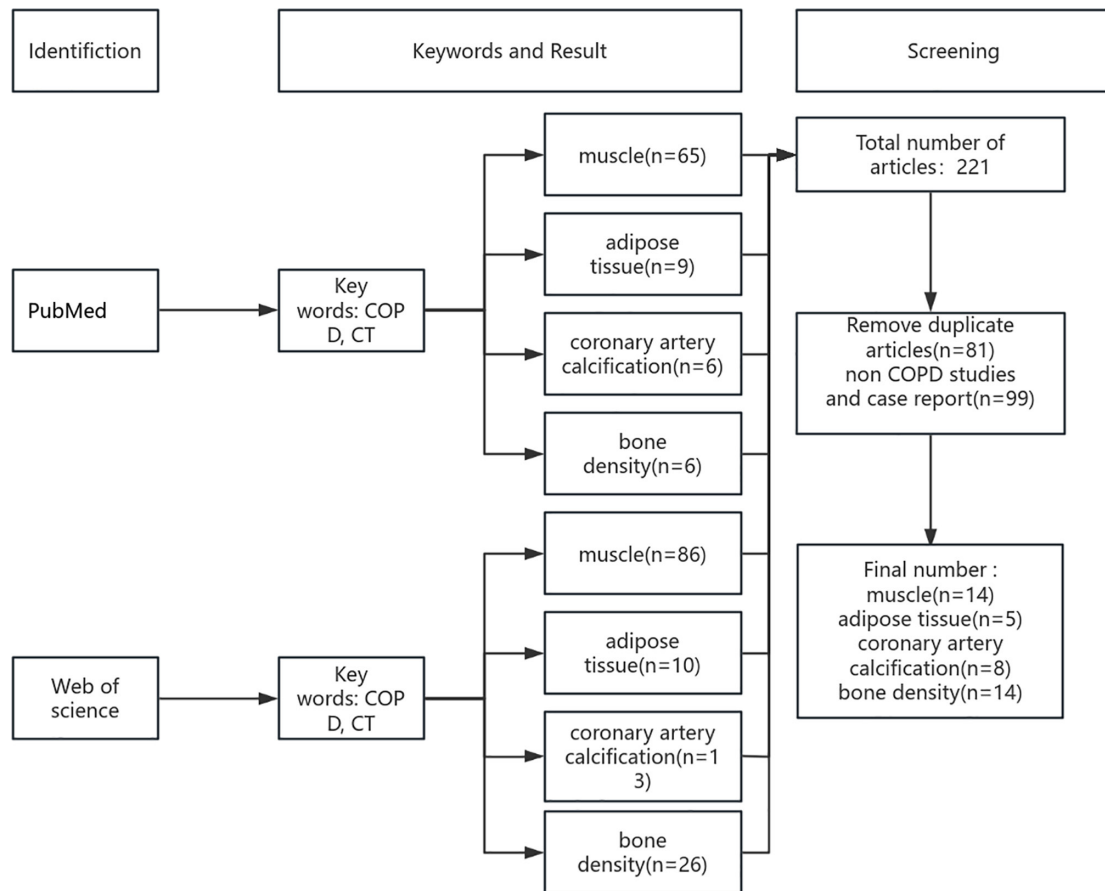


Figure S1 Process flowchart for article inclusion. COPD, chronic obstructive pulmonary disease; CT, computed tomography.