



Video S1 The patient had a history of tuberculosis. The preoperative CT scan revealed atelectasis in the middle and lower lobes of the right lung. No obvious abnormalities were found in other lung lobes.

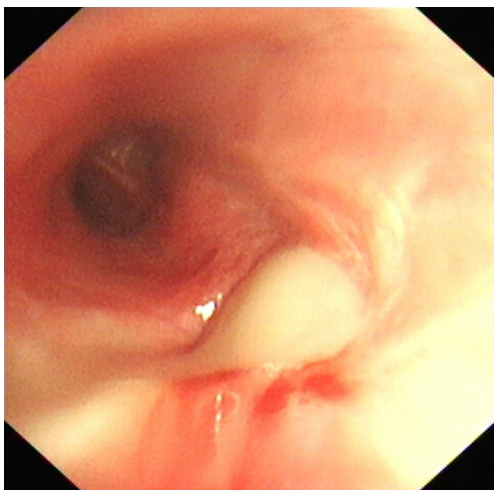


Figure S1 Preoperative bronchoscopy revealed purulent material overflowing from the middle lobe bronchus. No purulent secretion was found in the bronchus of the right lower lobe.