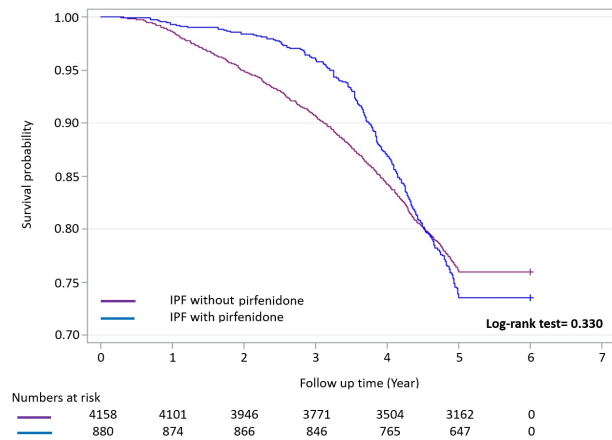


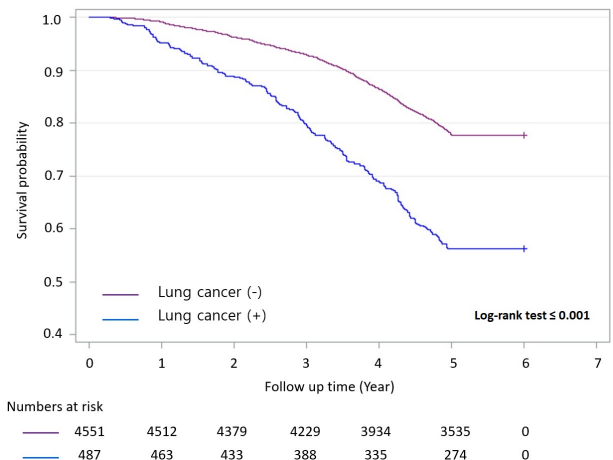
**Table S1** Exclusion for connective tissue disease related and other diffuse lung parenchymal disease

Disease	ICD-10 code
Rheumatic disease or vasculitis	
Rheumatoid lung disease	M051
Rheumatoid vasculitis	M052
Rheumatoid arthritis	M053
Seropositive RA	M058, M059, M060, M068, M069
Polyarteritis with lung involvement	M30.1
Wegener's granulomatosis	M31.3
Microscopic polyangiitis	M31.7
Systemic lupus erythematosus	M329
Dermatomyositis	M33
Systemic sclerosis	M34
Sjogren's syndrome	M350
Mixed connective tissue disease	M351
Other diffuse lung parenchymal disease	
Chemicals related, pneumoconiosis, HP	J60 to J709
Pulmonary alveolar proteinosis	J84.01
Sarcoidosis	D86
Lymphangiomyomatosis	J84.81
Pulmonary Langerhans cell histiocytosis	J84.82

ICD-10, International Classification of Diseases 10th Revision.



**Figure S1** Comparison of mortality in IPF patients stratified by pirfenidone therapy status. IPF, idiopathic pulmonary fibrosis.



**Figure S2** Comparison of mortality in IPF patients with and without lung cancer. IPF, idiopathic pulmonary fibrosis.