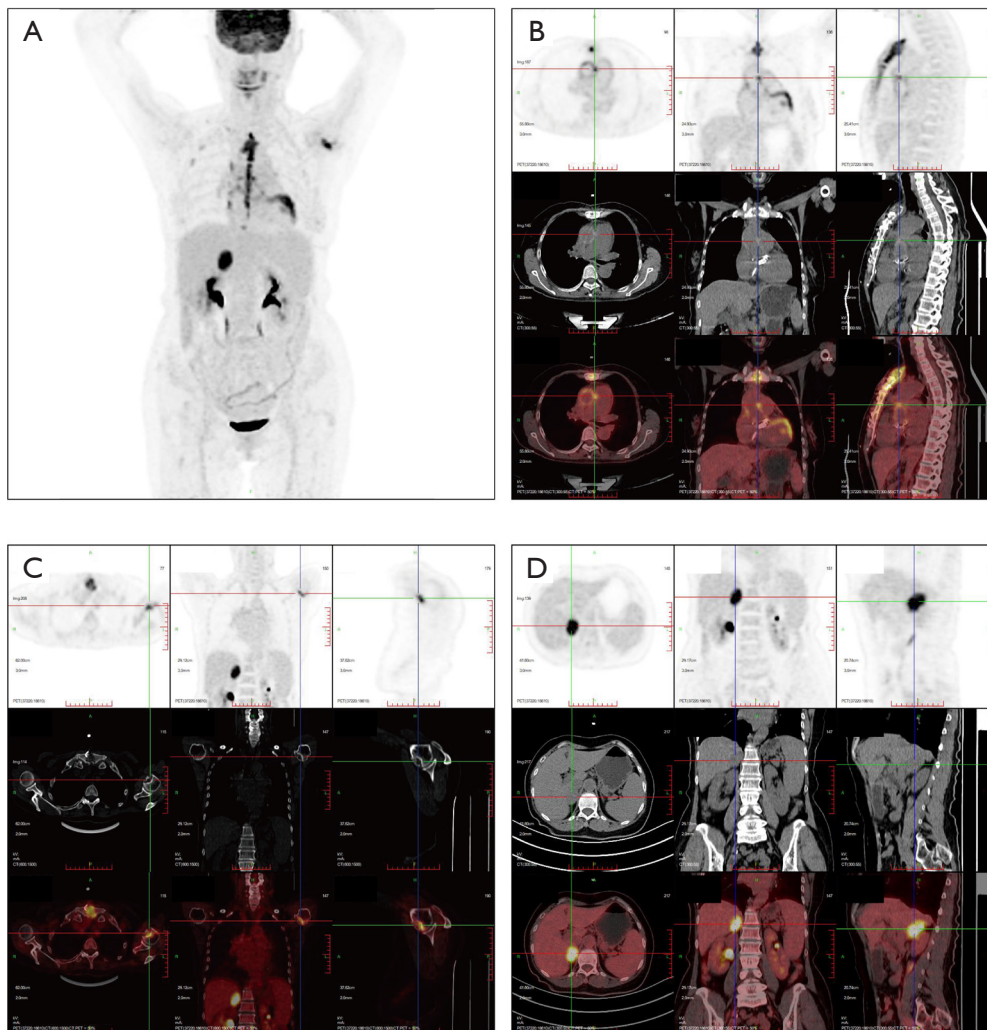


**Figure S1** Surgery image. During surgery, a mass was found at the root of the ascending aorta and aortic valve leaflet, and the adjacent aortic wall was not smooth (with \* highlighted).



**Figure S2** Images from  $^{18}\text{F}$ -fluorodeoxyglucose PET. (A) Body MIP. The image displays the concentration of radioactive isotopes in various areas including the aortic valve, proximal ascending aorta, right adrenal gland, and left humeral head. (B) Aortic valve level. An increased uptake of radioactivity was observed in the aortic root, with an  $\text{SUV}_{\text{max}}$  of 8.6. (C) Humeral head level. Bone destruction was observed in the left humeral head with increased radiation uptake and an  $\text{SUV}_{\text{max}}$  of 13.4. (D) Adrenal gland level. A circular shadow with clear boundaries was observed in the right adrenal area, with a size of about 30 mm  $\times$  20 mm. Radioactivity uptake was increased, with an  $\text{SUV}_{\text{max}}$  of 15.1. PET, positron emission tomography; MIP, maximum intensity projection;  $\text{SUV}_{\text{max}}$ , maximum standardized uptake value.