

Figure S1 External validation of DL-CXR risk score in the overall population, with the two groups stratified by DL-CXR prediction. DL-CXR, deep learning chest X-ray.

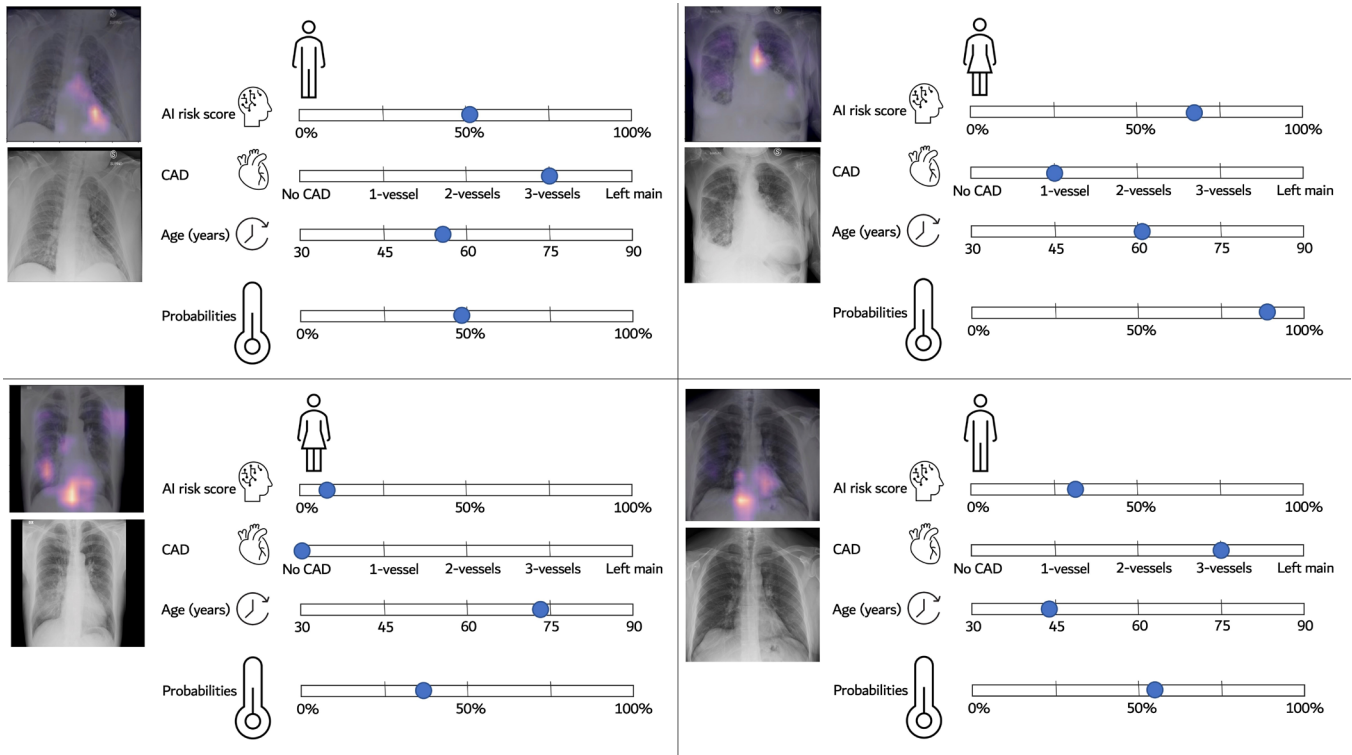


Figure S2 Heatmaps of four patients (two females and two males) showing DL-CXR areas of attention, highlighted in different shades of colour. An interactive nomogram has been derived by the Cox-regression analysis and allows identification of the mortality risk based on DL-CXR score, CAD status, and age. CAD, coronary artery disease; DL-CXR, deep learning chest X-ray.