

Supplementary

Table S1 Summary information for SNPs that were used as genetic instruments for Mendelian randomization analyses of genetically predicted chronic hepatitis B infection or chronic hepatitis C infection and risk of IPF

Exposure	SNP	Effect allele	Other allele	Beta	SE	P value	F	IPF		
								Beta	SE	P value
Chronic hepatitis B infection	rs114484678	C	T	-0.314	0.050	2.33E-10	40	-0.150	0.093	0.106
Chronic hepatitis B infection	rs115552552	T	C	-0.555	0.078	1.13E-12	51	0.074	0.121	0.537
Chronic hepatitis B infection	rs115888238	C	G	-0.490	0.055	2.17E-19	81	-0.085	0.107	0.428
Chronic hepatitis B infection	rs11754012	T	C	-0.489	0.056	1.62E-18	77	0.095	0.074	0.200
Chronic hepatitis B infection	rs117810449	C	T	0.317	0.047	1.16E-11	46	-0.092	0.140	0.509
Chronic hepatitis B infection	rs12214820	A	G	-0.450	0.073	7.97E-10	38	0.070	0.062	0.256
Chronic hepatitis B infection	rs148198842	A	G	-0.558	0.079	1.55E-12	50	0.144	0.198	0.469
Chronic hepatitis B infection	rs16870693	A	C	0.273	0.042	5.55E-11	43	-1.061	0.914	0.246
Chronic hepatitis B infection	rs17200976	G	A	-0.403	0.063	1.59E-10	41	0.065	0.472	0.890
Chronic hepatitis B infection	rs2021835	T	C	-0.457	0.083	3.47E-08	30	-0.142	0.100	0.154
Chronic hepatitis B infection	rs3131004	G	A	0.193	0.030	1.16E-10	41	0.091	0.048	0.061
Chronic hepatitis B infection	rs34975158	A	G	-0.515	0.065	1.73E-15	63	0.130	0.106	0.220
Chronic hepatitis B infection	rs373126870	G	C	-0.492	0.088	2.28E-08	31	-0.171	0.099	0.085
Chronic hepatitis B infection	rs3998115	C	G	0.444	0.053	3.54E-17	71	0.126	0.051	0.014
Chronic hepatitis B infection	rs6913309	A	T	-0.495	0.046	2.53E-27	117	0.062	0.074	0.404
Chronic hepatitis B infection	rs72661136	C	T	-0.517	0.084	6.77E-10	38	0.090	0.201	0.654
Chronic hepatitis B infection	rs73739611	T	C	0.440	0.032	8.21E-44	192	-0.068	0.075	0.366
Chronic hepatitis B infection	rs7741871	A	G	-0.360	0.048	4.76E-14	57	-0.049	0.049	0.322
Chronic hepatitis B infection	rs79690458	T	A	-0.530	0.068	7.44E-15	60	0.016	0.123	0.897
Chronic hepatitis B infection	rs9277665	A	G	-0.215	0.033	1.01E-10	42	-0.012	0.058	0.835
Chronic hepatitis C infection	rs2853968	G	A	0.112	0.018	1.78E-10	41	-0.016	0.054	0.771
Chronic hepatitis C infection	rs412657	G	T	0.103	0.018	6.30E-09	34	0.108	0.051	0.034
Chronic hepatitis C infection	rs8113007	T	A	0.271	0.028	5.42E-22	93	0.024	0.054	0.662
Chronic hepatitis C infection	rs9275267	G	A	-0.123	0.018	2.32E-12	49	-0.012	0.053	0.829
Chronic hepatitis C infection	rs9501400	A	G	0.111	0.017	8.05E-11	42	-0.037	0.073	0.610

SNP, single nucleotide polymorphism; SE, standard error; P value, the value for the genetic association; F, F statistic; IPF, idiopathic pulmonary fibrosis.

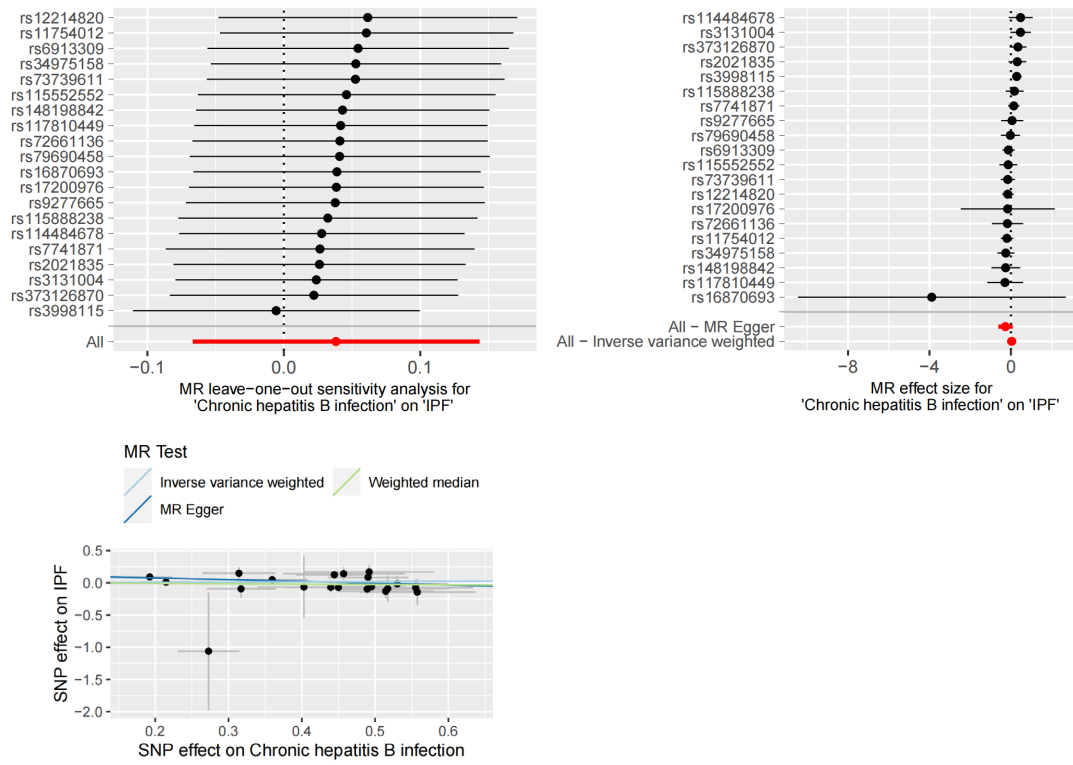


Figure S1 The leave-one-out plot, forest plot, and scatter plot for the association of chronic HBV infection and idiopathic pulmonary fibrosis (the forward MR analysis).

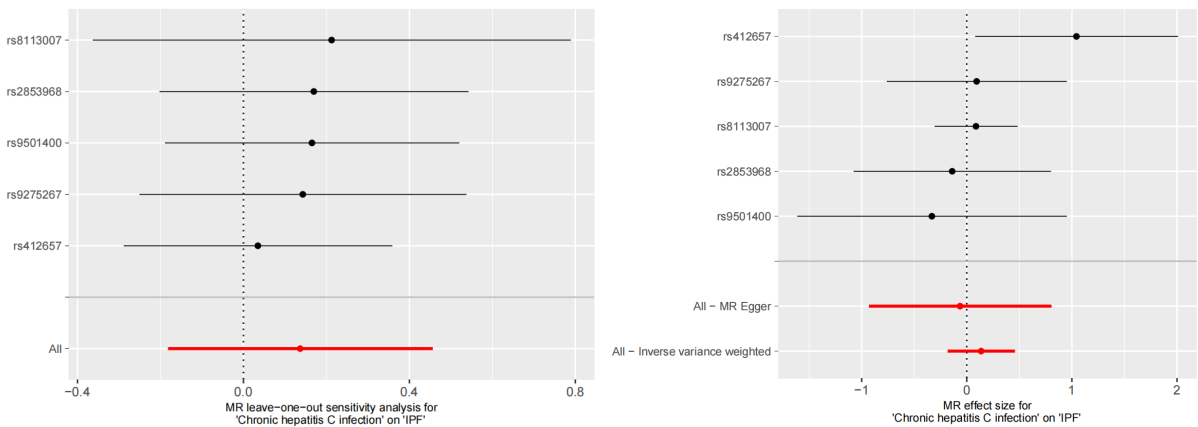


Figure S2 The leave-one-out plot, forest plot, and scatter plot for the association of chronic HCV infection and idiopathic pulmonary fibrosis (the forward MR analysis).

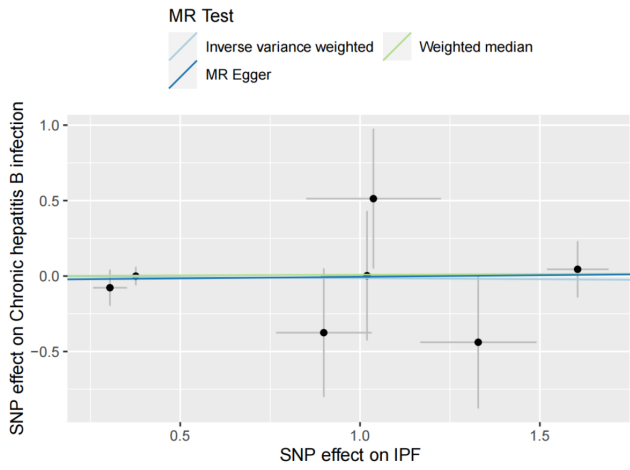
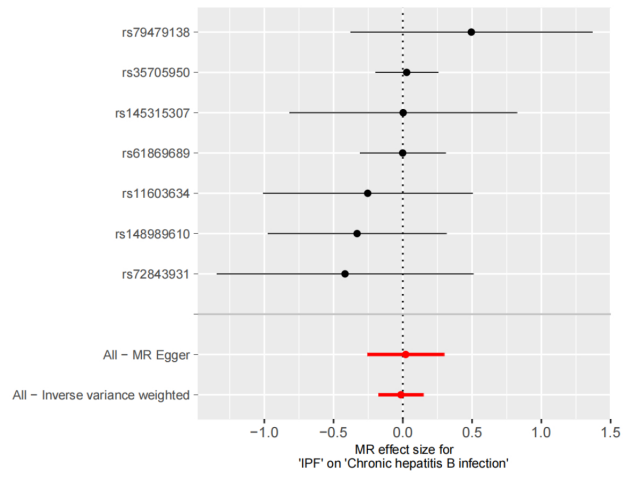
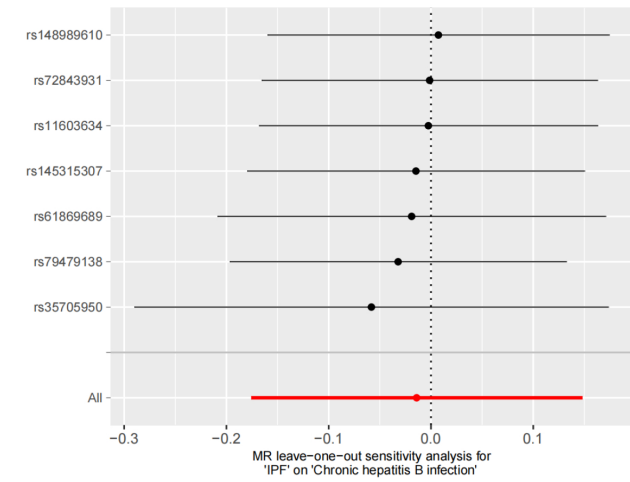


Figure S3 The leave-one-out plot, forest plot, and scatter plot for the association of chronic HBV infection and idiopathic pulmonary fibrosis (the reverse MR analysis).

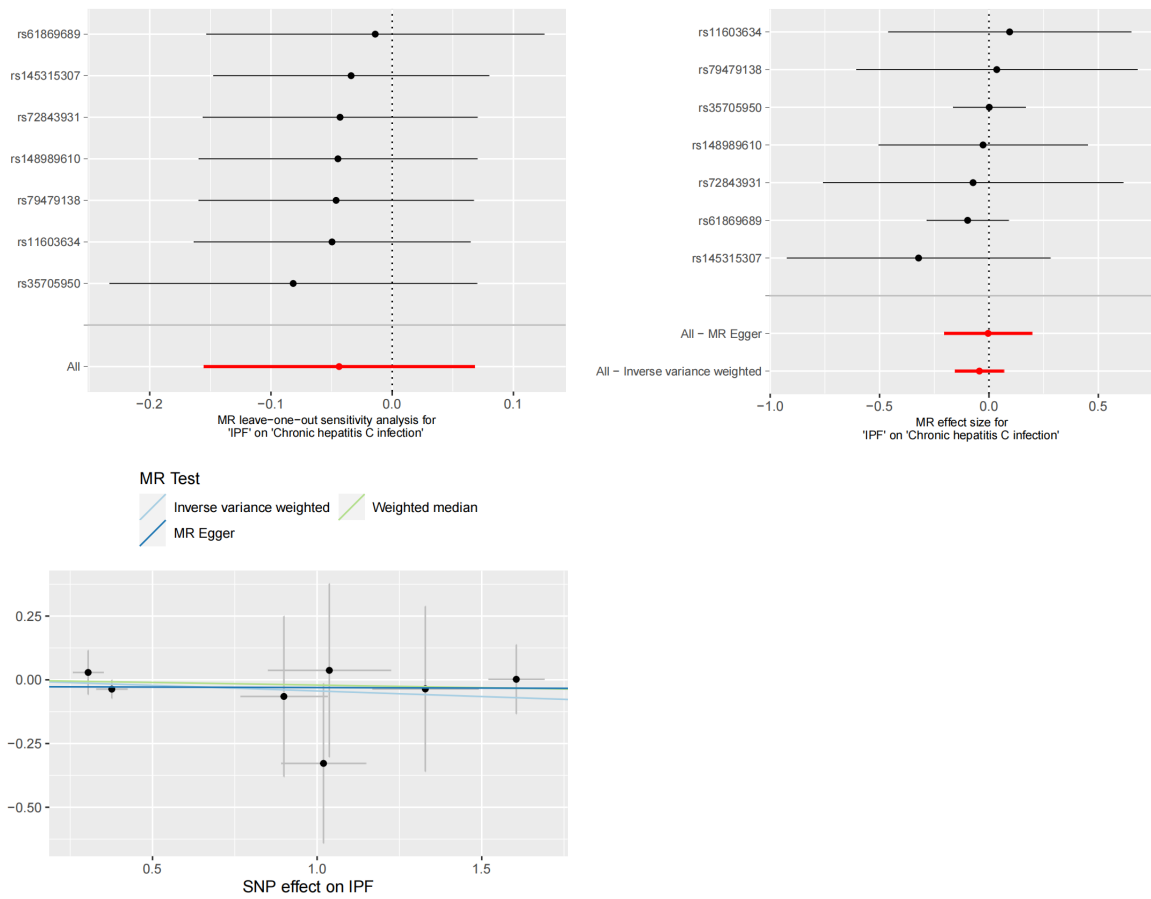


Figure S4 The leave-one-out plot, forest plot, and scatter plot for the association of chronic HCV infection and idiopathic pulmonary fibrosis (the reverse MR analysis).