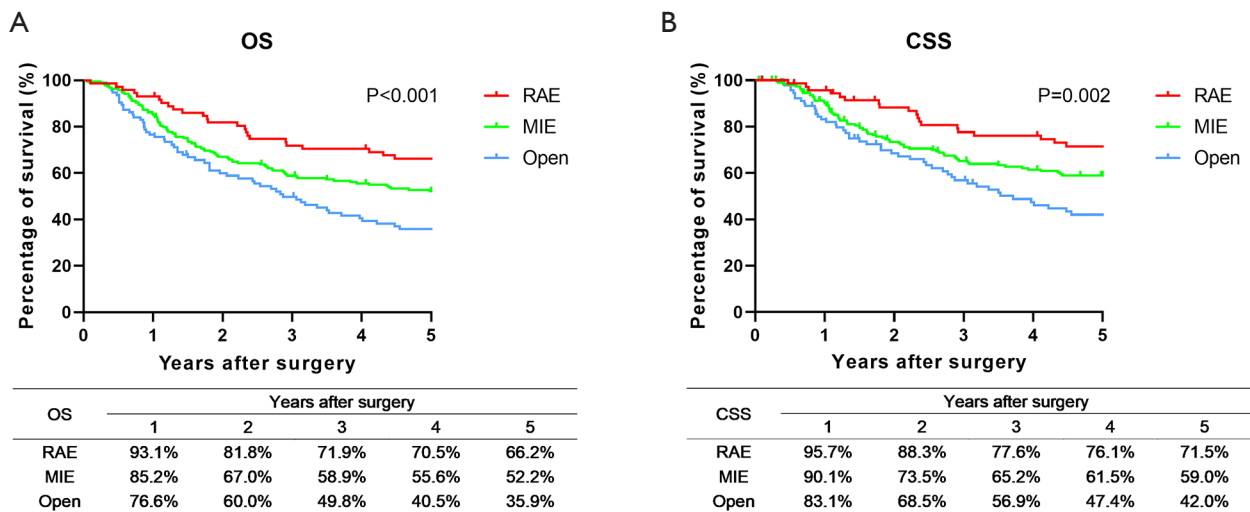


**Table S1** Baseline characteristics of patients with and without neoadjuvant treatment before and after matching

Variables	Before PSM			After PSM		
	NAT (+) (n=68)	NAT (-) (n=473)	P value	NAT (+) (n=68)	NAT (-) (n=68)	P value
Age (years)	62.1±6.5	64.6±7.7	0.010	62.1±6.5	64.9±8.1	0.027
BMI (kg/m <sup>2</sup> )	22.0±3.0	22.8±3.0	0.041	22.0±3.0	22.4±3.3	0.479
Gender			0.88			0.82
Male	57 (16.2)	393 (16.9)		57 (83.8)	56 (82.4)	
Female	11 (83.8)	80 (83.1)		11 (16.2)	12 (17.6)	
Tumor location			0.10			>0.99
Middle thoracic	49 (72.1)	275 (58.1)		49 (72.1)	48 (70.6)	
Upper thoracic	9 (13.2)	88 (18.6)		9 (13.2)	10 (14.7)	
Lower thoracic	10 (14.7)	110 (23.3)		10 (14.7)	10 (14.7)	
cT stage			0.004			0.001
T1	1 (1.5)	67 (14.2)		1 (1.5)	7 (10.3)	
T2	17 (25.0)	134 (28.3)		17 (25.0)	3 (4.4)	
T3	48 (70.6)	259 (54.8)		48 (70.6)	55 (80.9)	
T4	2 (2.9)	13 (2.7)		2 (2.9)	3 (4.4)	
cN stage			0.002			0.46
N0	7 (10.3)	112 (23.7)		7 (10.3)	3 (4.4)	
N1	34 (50.0)	259 (54.8)		34 (50.0)	36 (52.9)	
N2	26 (38.2)	101 (21.4)		26 (38.2)	29 (42.6)	
N3	1 (1.5)	1 (0.2)		1 (1.5)	0	
cStage			0.000			>0.99
cI	7 (10.3)	66 (14.0)		7 (10.3)	7 (10.3)	
cII	0	142 (30.0)		0	0	
cIII	58 (85.3)	252 (53.3)		58 (85.3)	58 (85.3)	
cIV	3 (4.4)	13 (2.7)		3 (4.4)	3 (4.4)	

Data are presented as mean ± SD or n (%). NAT, neoadjuvant treatment; BMI in accordance with the Asia-Pacific standards. BMI, body mass index; AJCC, American Joint Committee on Cancer; TNM, tumor-node-metastasis; AJCC, American Joint Committee on Cancer; TNM, tumor-node-metastasis.



**Figure S1** The survival of pStage II–III (AJCC 8<sup>th</sup> edition) ESCC patients who received different esophagectomy techniques. (A) The OS of pStage II–III (AJCC 8<sup>th</sup> edition) ESCC patients who received different esophagectomy techniques; (B) The CSS of pStage II–III (AJCC 8<sup>th</sup> edition) ESCC patients who received different esophagectomy techniques; OS, overall survival; CSS, cancer specific survival; RAE, robot-assisted esophagectomy; MIE, minimal invasive esophagectomy; AJCC, American Joint Committee on Cancer; ESCC, esophageal squamous cell carcinoma.