

Figure S1 Bilateral interstitial infiltrates and pneumothorax worsened in the MDA5⁺ group after VV-ECMO. (A) showed that the first HRCT on admission showed bilateral interstitial infiltrates and pneumothorax in the MDA5⁺ group before VV-ECMO. (B) illustrated multiple exudate consolidations worsened on the computed tomography scans following VV-ECMO.

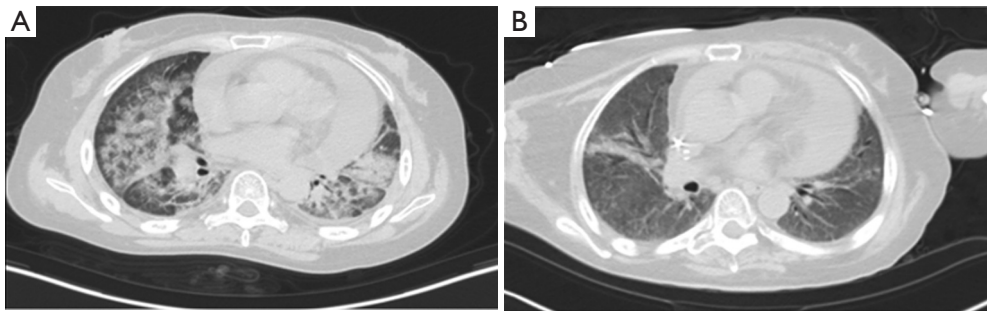


Figure S2 Bilateral interstitial infiltrates and pneumothorax improved in the SRD group after VV-ECMO. (A) showed that the first HRCT on admission showed bilateral interstitial infiltrates and mediastinal emphysema in the SRDs group before VV-ECMO. (B) illustrated multiple exudate consolidations improved in other SRDs groups following VV-ECMO.