

Figure S1 Kaplan-Meier survival curve of pulmonary carcinoids (Subtype) in different surgery type. (A) Unadjusted TC cohort; (B) unadjusted AC cohort; (C) PSM TC cohort; (D) PSM AC cohort. PSM, propensity score matching; TC, typical carcinoid; AC, atypical carcinoid.

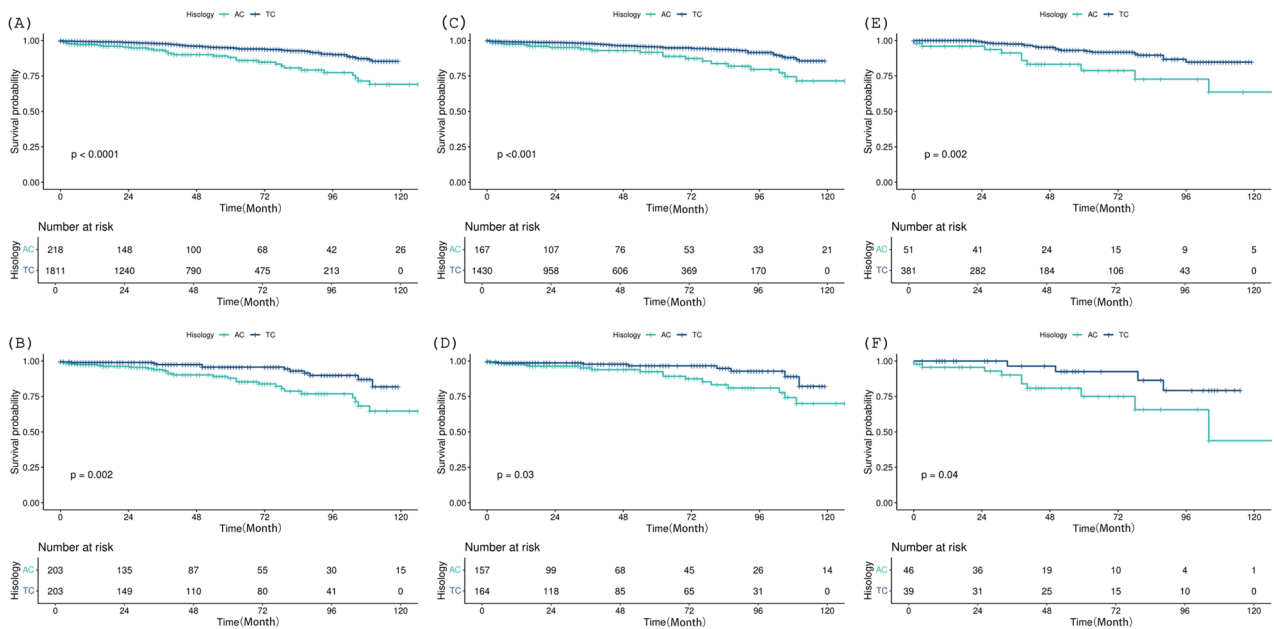


Figure S2 Kaplan-Meier survival curve of AC versus TC. (A) Unadjusted original cohort; (B) PSM matched original cohort; (C) Unadjusted anatomical resection cohort; (D) PSM matched anatomical resection cohort; (E) Unadjusted wedge resection cohort; (F) PSM matched wedge resection cohort. PSM, propensity score matching; TC, typical carcinoid; AC, atypical carcinoid.

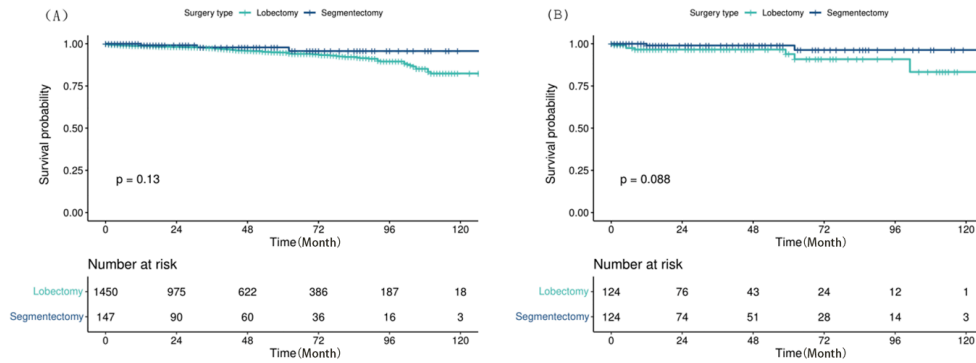


Figure S3 Kaplan-Meier survival curve of pulmonary carcinoids in lobectomy versus segmentectomy. (A) Unadjusted cohort; (B) PSM matched cohort. PSM, propensity score matching.

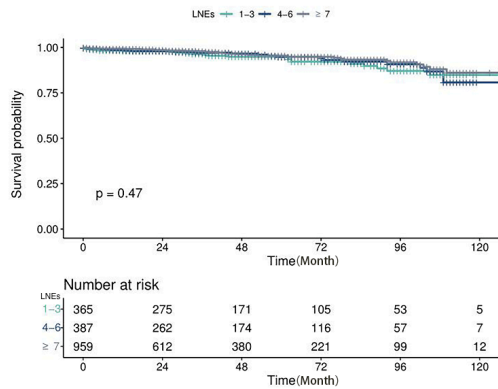


Figure S4 Kaplan-Meier survival curve of pulmonary carcinoids in different number of LNEs. LNE, lymph node examination.