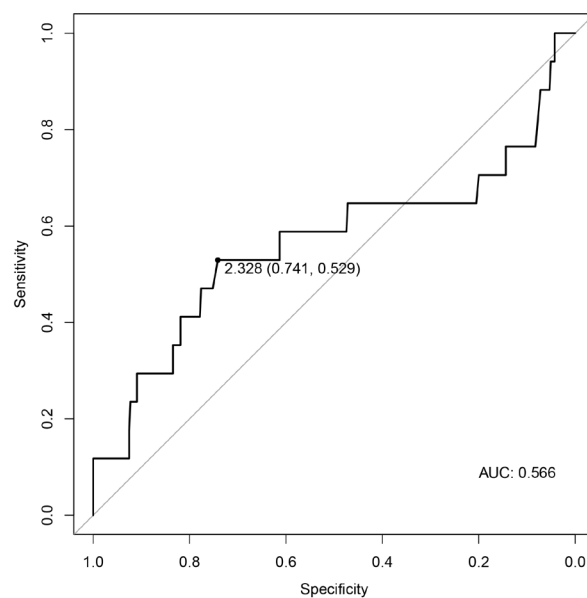


**Figure S1** ROC curve and AUC of all participants. Threshold: 1.766. The values in parentheses indicate sensitivity and specificity for the ROC curve, respectively. ROC, receiver operating characteristic; AUC, area under the curve.



**Figure S2** ROC curve and AUC of participants with TBI. Threshold: 2.328. The values in parentheses indicate sensitivity and specificity for the ROC curve, respectively. ROC, receiver operating characteristic; AUC, area under the curve; TBI, tuberculosis infection.