

Figure S1 K-M analysis showed that patients with low expression of ARMCX2 (A) and high expression of ACOT11 (B) had shorter survival time in the train cohort.

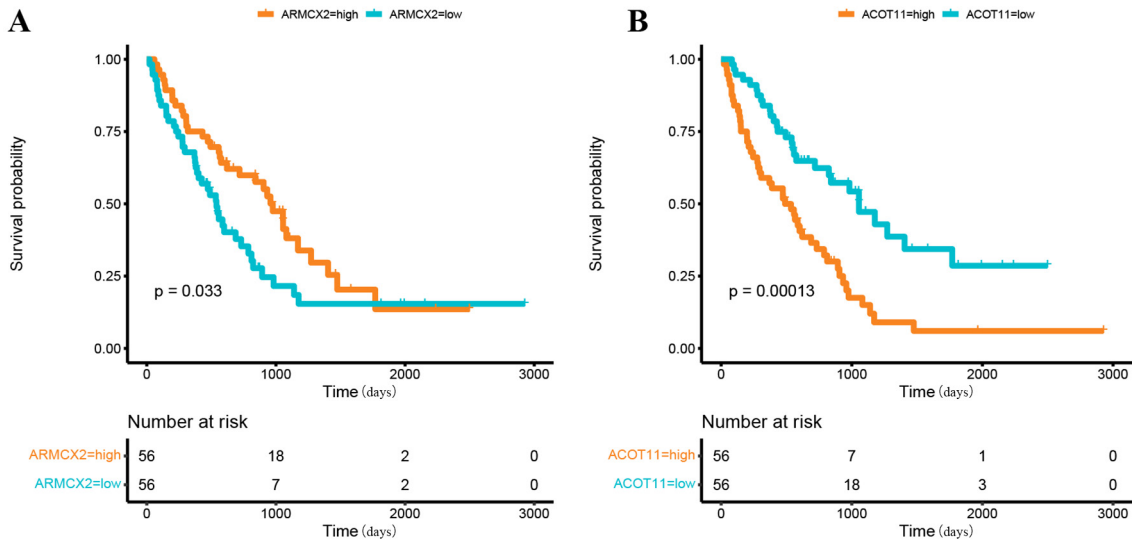


Figure S2 K-M analysis showed that patients with low expression of ARMCX2 (A) and high expression of ACOT11 (B) had shorter survival time in the validation cohort.

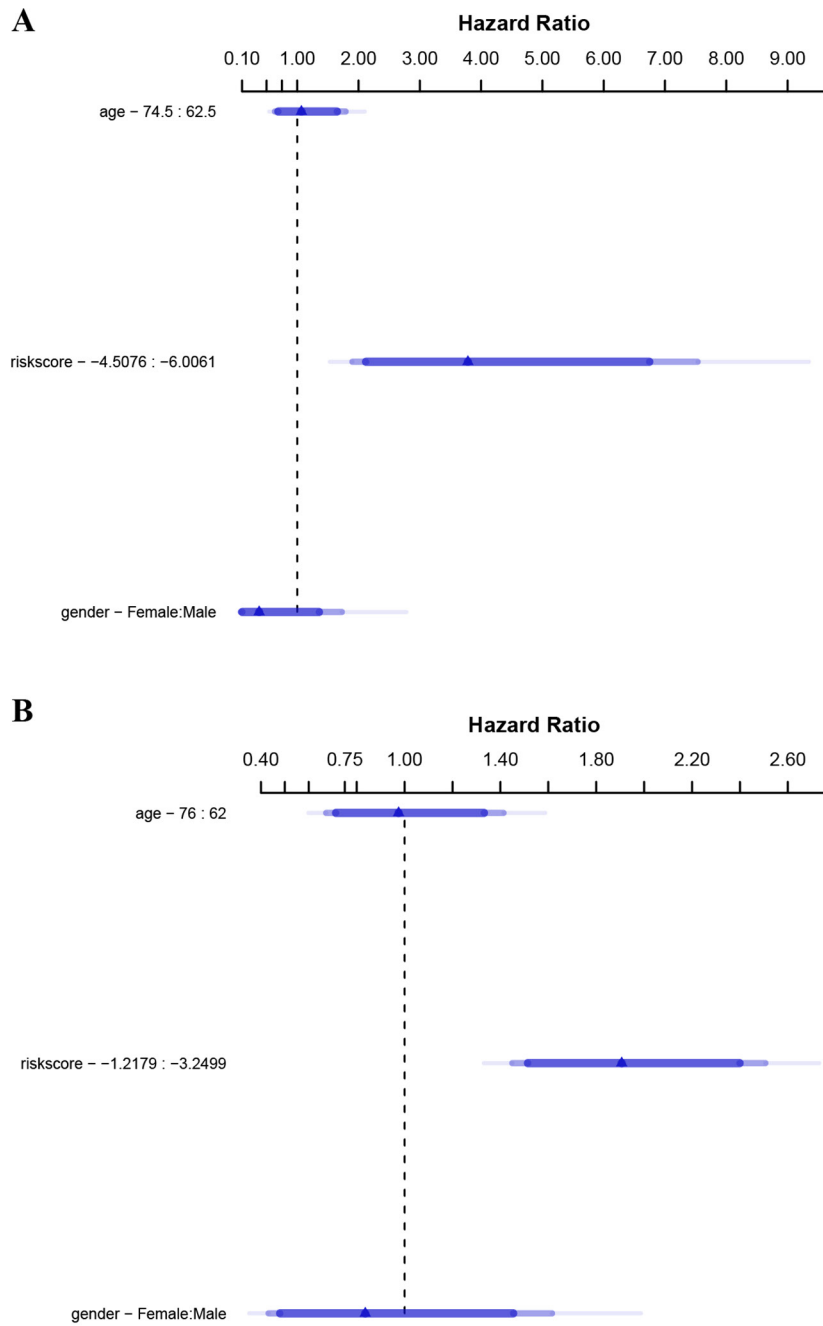


Figure S3 Multivariate independent prognosis analyses in train (A) and validation (B) sets.

Table S1 The list of LASSO regression genes

Gene	Coef
<i>AASS</i>	-0.050599336
<i>CRLS1</i>	0.212461023
<i>LETM2</i>	0.399019429
<i>MSRA</i>	0.103282516
<i>ACOT11</i>	0.560238252
<i>ARMCX2</i>	-0.897454548

LASSO, least absolute shrinkage and selection operator.

Table S2 The list of multivariate Cox regression genes

	HR	95% CI	P value	Gene coef
<i>ACOT11</i>	3.365	1.186–9.547	0.0226	1.65
<i>ARMCX2</i>	0.154	0.048–0.494	0.0017	-2.04
<i>AASS</i>	0.825	0.367–1.854	0.6413	
<i>CRLS1</i>	6.515	0.299–141.803	0.2331	
<i>LETM2</i>	2.346	0.551–9.987	0.2486	
<i>MSRA</i>	1.837	0.982–3.437	0.057	

HR, hazard ratio; CI, confidence interval.