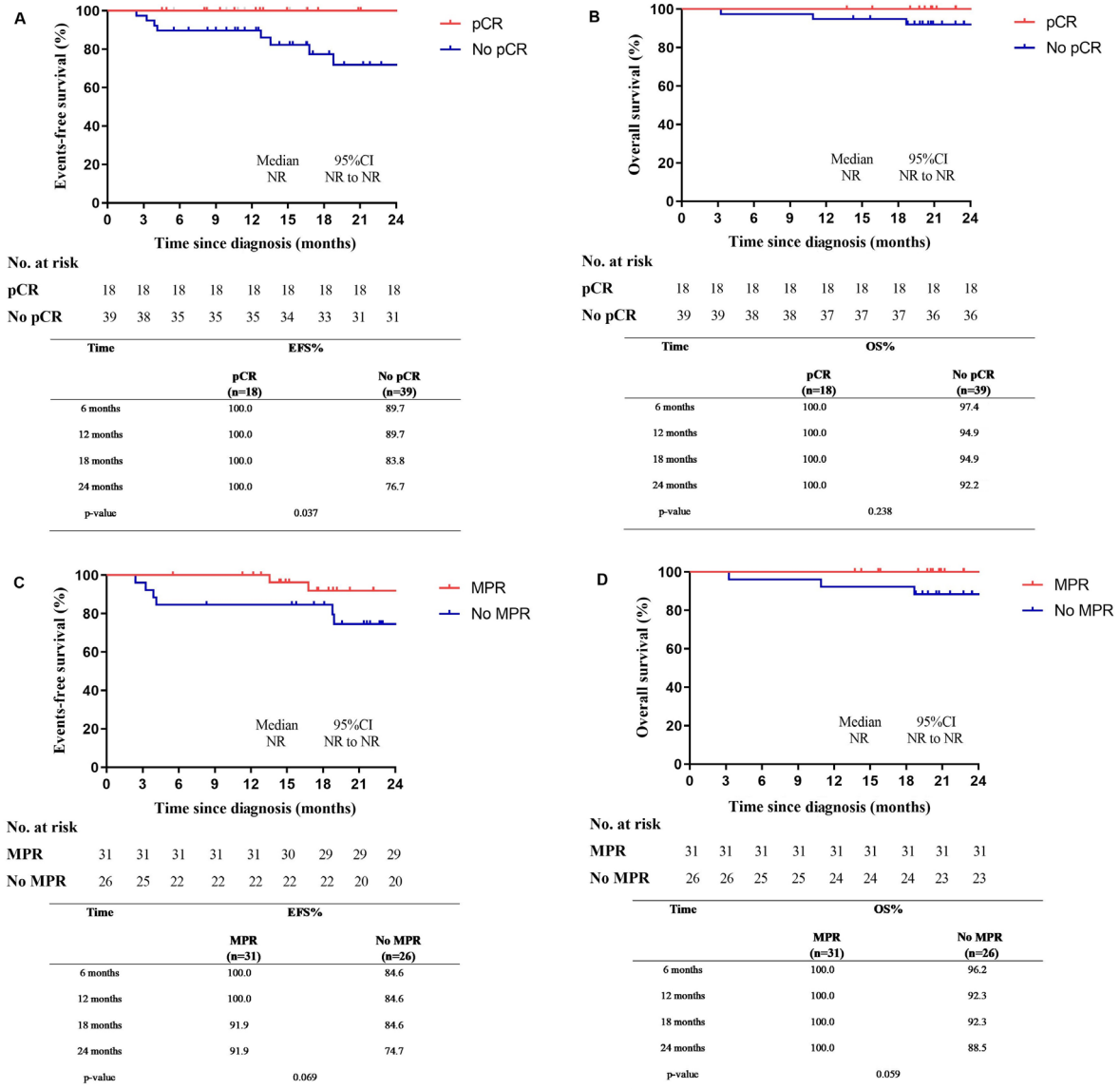


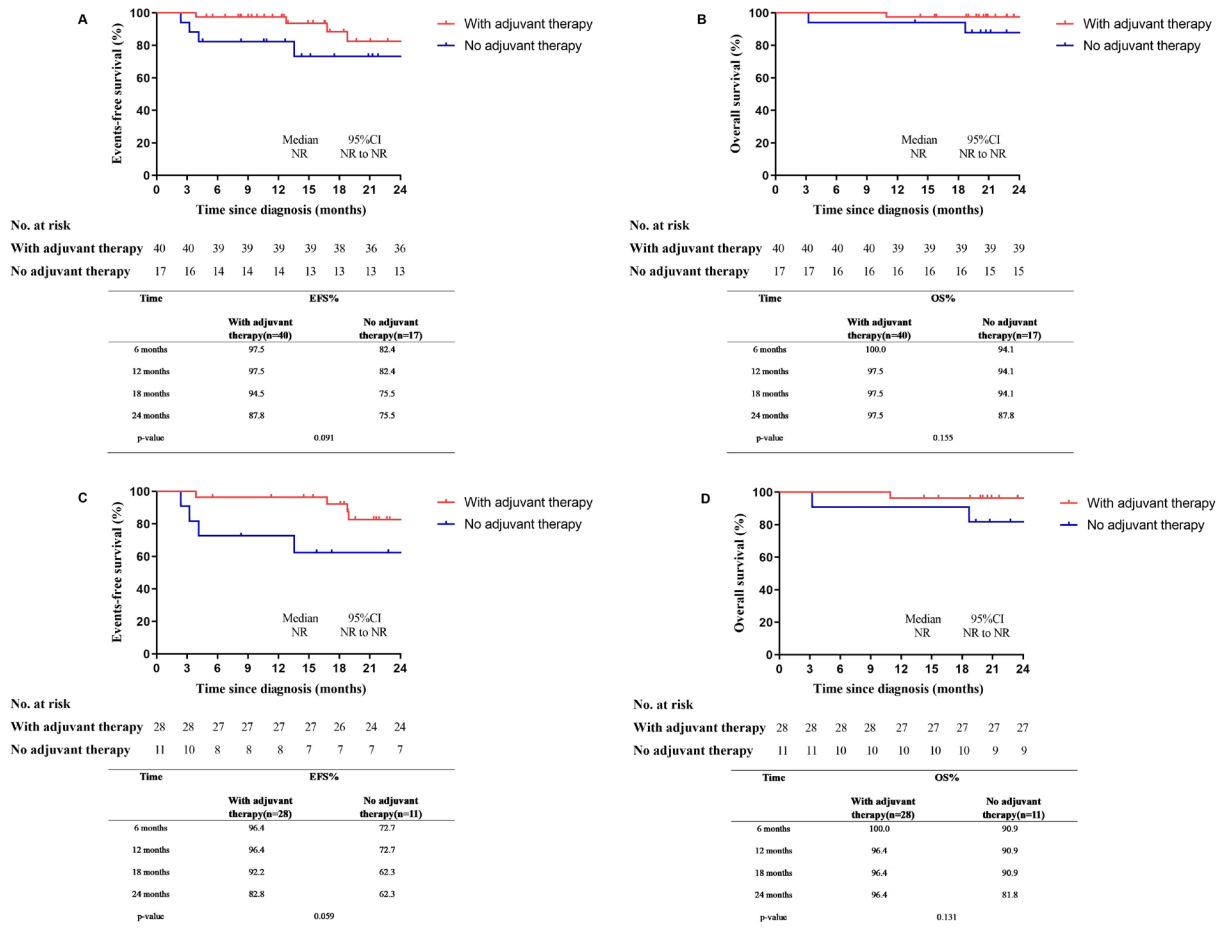
**Table S1** Adjuvant therapy and pathologic response

Characteristics	All patients (n=57)	pCR (n=18)	No pCR (n=39)	P value
Adjuvant treatment				0.694
Yes	40 (70.2)	12 (66.7)	28 (71.8)	
No	17 (29.8)	6 (33.3)	11 (28.2)	

Values are presented as n (%). pCR, pathological complete response.



**Figure S1** Survival analysis of all patients. Kaplan-Meier curves of EFS (A) and OS (B) stratified by pCR status; Kaplan-Meier curves of EFS (C) and OS (D) stratified by MPR status. pCR, pathological complete response; CI, confidence interval; NR, not reach; EFS, event-free survival; OS, overall survival; MPR, major pathological response.



**Figure S2** Survival analysis of all patients and patients who did not achieve pCR. For all patients (n=57), Kaplan-Meier curves of EFS (A) and OS (B) stratified by whether to receive adjuvant therapy after surgery; For patients who did not achieve pCR (n=39), Kaplan-Meier curves of EFS (C) and OS (D) stratified by whether to receive adjuvant therapy after surgery. CI, confidence interval; NR, not reach; EFS, event-free survival; OS, overall survival; pCR, pathological complete response.

**Table S2** Neoadjuvant therapy and clinical response

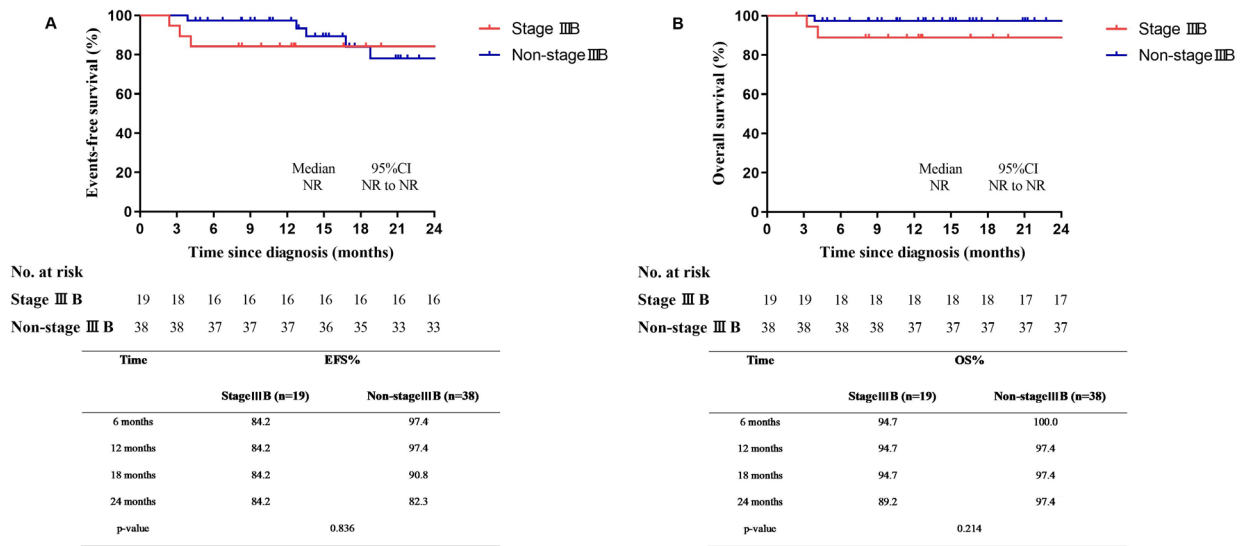
Characteristics	All patients (n=57)	Stage IIIB (n=19)	Non-stage IIIB (n=38)	P value
Neoadjuvant therapy regimens				0.594
ICIs alone	4 (7.0)	2 (10.5)	2 (5.3)	
ICIs and chemotherapy	53 (93.0)	17 (89.5)	36 (94.7)	
Course of neoadjuvant treatment				0.602
Two	32 (56.1)	9 (47.4)	23 (60.5)	
Three	16 (28.1)	6 (31.6)	10 (26.3)	
Four	9 (15.8)	4 (21.1)	5 (13.2)	
DCR	57 (100.0)	–	–	–
ORR	32 (56.1)	11 (57.9)	21 (55.3)	0.850
Adjuvant treatment				0.682
Yes	40 (70.2)	14 (73.7)	26 (68.4)	0.111
Immunotherapy alone	9 (22.5)	5 (35.7)	4 (15.4)	
Chemotherapy alone	10 (25.0)	1 (7.1)	9 (34.6)	
ICIs and chemotherapy	21 (52.5)	8 (57.1)	13 (50.0)	
No	17 (29.8)	5 (26.3)	12 (31.6)	

Values are presented as n (%). ICI, immune checkpoint inhibitor; DCR, disease control rate; ORR, objective response rate.

**Table S3** Surgical details and pathologic response

Characteristics	All patients (n=57)	Stage IIIB (n=19)	Non-stage IIIB (n=38)	P value
Complete resection (R0)	52 (91.2)	17 (94.4)	35 (92.1)	>0.99
VATS	30 (52.6)	12 (63.2)	18 (47.4)	0.260
Conversion to open	3 (10.0)	3 (25.0)	0	0.054
Extent of resection				0.571
Lobectomy	41 (71.9)	14 (73.7)	27 (71.1)	
Multiple lobectomy	10 (17.5)	2 (10.5)	8 (21.1)	
Pneumonectomy	3 (5.3)	1 (5.3)	2 (5.3)	
Sleeve lobectomy	3 (5.3)	2 (10.5)	1 (2.6)	
Operative time (min)	138.50±51.01	141.43±59.28	137.61±49.68	0.899
Estimated blood loss (mL)	189.44±230.37	244.12±339.06	164.32±158.04	0.341
Interval time from the last neoadjuvant to surgery (days)	35.58±13.39	33.53±8.70	36.61±15.21	0.892
The percentage of RVT cells (%)	26.6±32.5	34.1±34.4	22.8±31.2	0.253
pCR	18 (31.6)	5 (26.3)	13 (34.2)	0.546
MPR	31 (54.4)	8 (42.1)	23 (60.5)	0.118

Values are presented as mean ± standard deviation or n (%). VATS, video-assisted thoracic surgery; RVT, residual viable tumor; pCR, pathological complete response; MPR, major pathological response.



**Figure S3** Survival analysis of all patients. Kaplan-Meier curves of EFS (A) and OS (B) stratified by stage IIIB and non-stage IIIB. CI, confidence interval; NR, not reach; EFS, event-free survival; OS, overall survival.