

Figure S1 Comparative gene expression trajectories of disease-causing ionotropic glutamate receptors (iGluRs) genes in human and mouse. (A) *GRIA4*, (B) *GRIN1*, (C) *GRIN2A*, (D) *GRIN2B*, (E) *GRIA2*, (F) *GRIA3*, (G) *GRIA1*, (H) *GRIK2*, (I) *GRIN2D* and (J) *GRID2*.

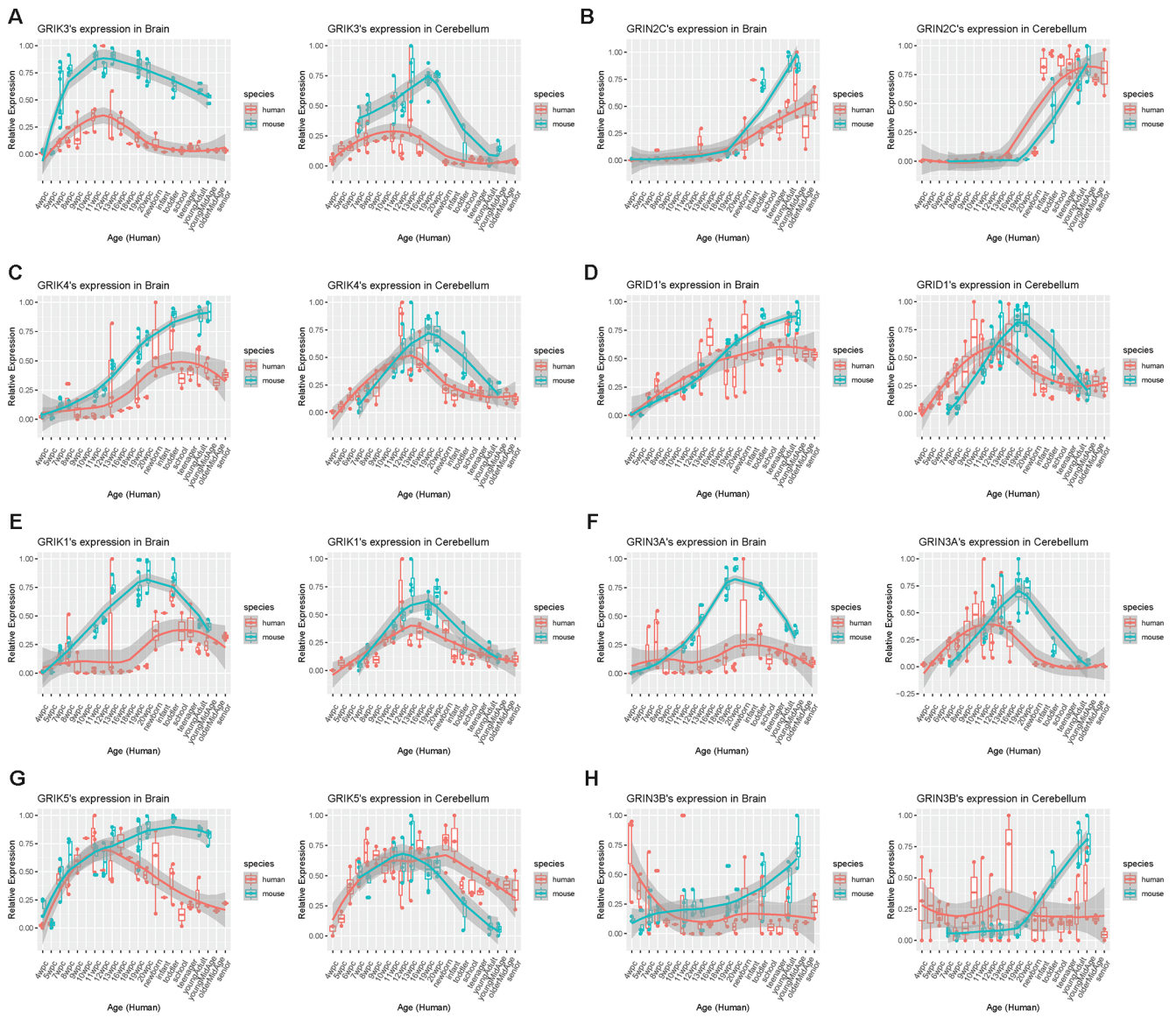


Figure S2 Comparative gene expression trajectories of unknown disease-causing iGluRs genes in human and mouse. (A) *GRIK3*, (B) *GRIN2C*, (C) *GRIK4*, (D) *GRID1*, (E) *GRIK1*, (F) *GRIN3A*, (G) *GRIK5*, (H) *GRIN3B*. iGluRs, ionotropic glutamate receptors.