

Figure S1 Intra-observer variability. Bland-Altman plots for EDV, ESV, and SV with biases and 95% LOA. EDV, end diastolic volume; EF, ejection fraction; ESV, end systolic volume; SV, stroke volume; LOA, limits of agreement.

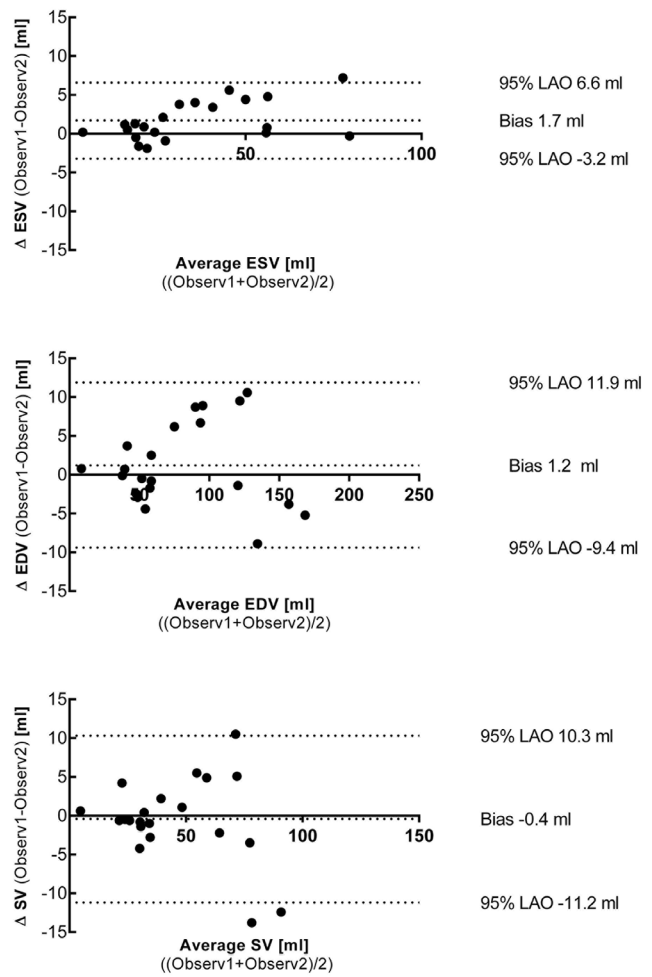


Figure S2 Inter-observer variability. Bland-Altman plots for EDV, ESV, and SV with biases and 95% LOA. EDV, end diastolic volume; EF, ejection fraction; ESV, end systolic volume; SV, stroke volume; LOA, limits of agreement.

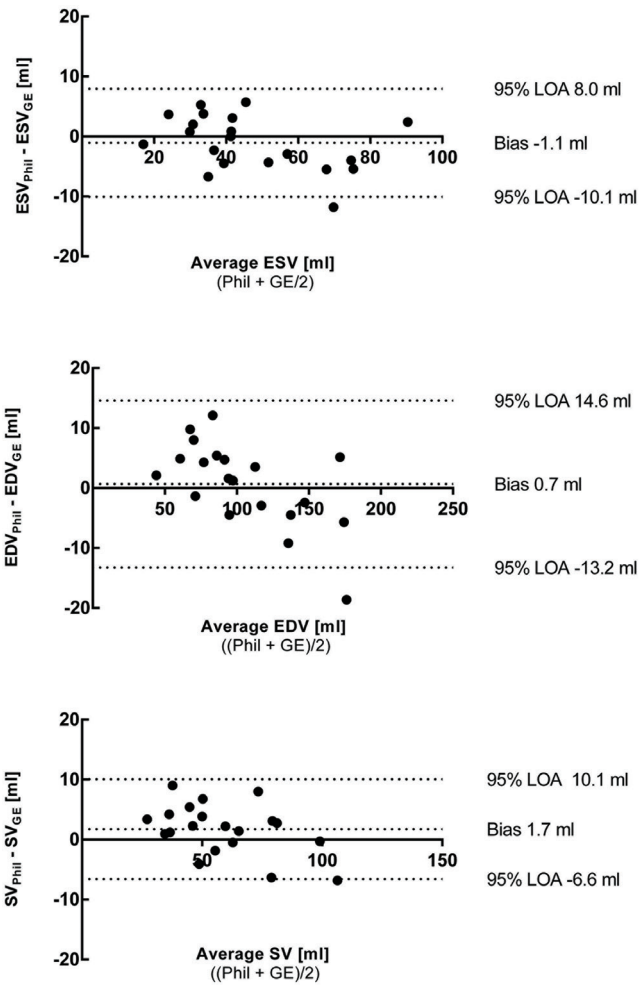


Figure S3 Intra-vendor variability, comparing Philips and GE datasets-Bland-Altman plots for EDV, ESV, and SV with biases and 95% LOA. EDV, end diastolic volume; EF, ejection fraction; ESV, end systolic volume; SV, stroke volume; LOA, limits of agreement.

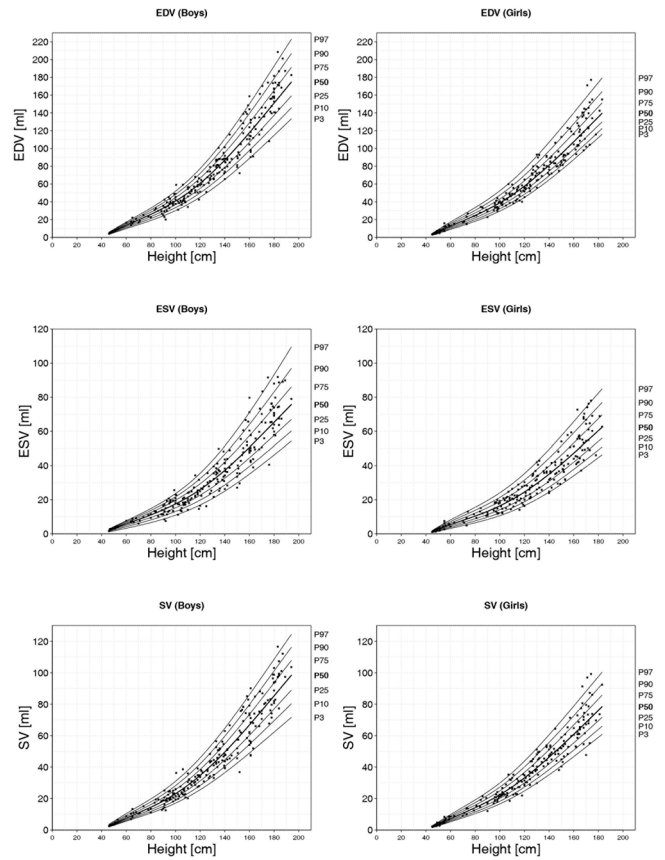


Figure S4 Gender-specific percentiles for with EDV, ESV, and SV in relation to height. P indicates the percentile value, e.g., P50 = 50th percentile value. EDV, end diastolic volume; EF, ejection fraction; ESV, end systolic volume; SV, stroke volume; LOA, limits of agreement.