

The redox ratio images of the wounds on individual mice over time are shown in *Figure S1*. *Figure S2* shows all the 3D images of the volumetric redox ratio for all the wound

biopsies used in this study. The consistency in the redox ratio of the wounds on different mice (biological replicates) in the group/days signifies our research findings.

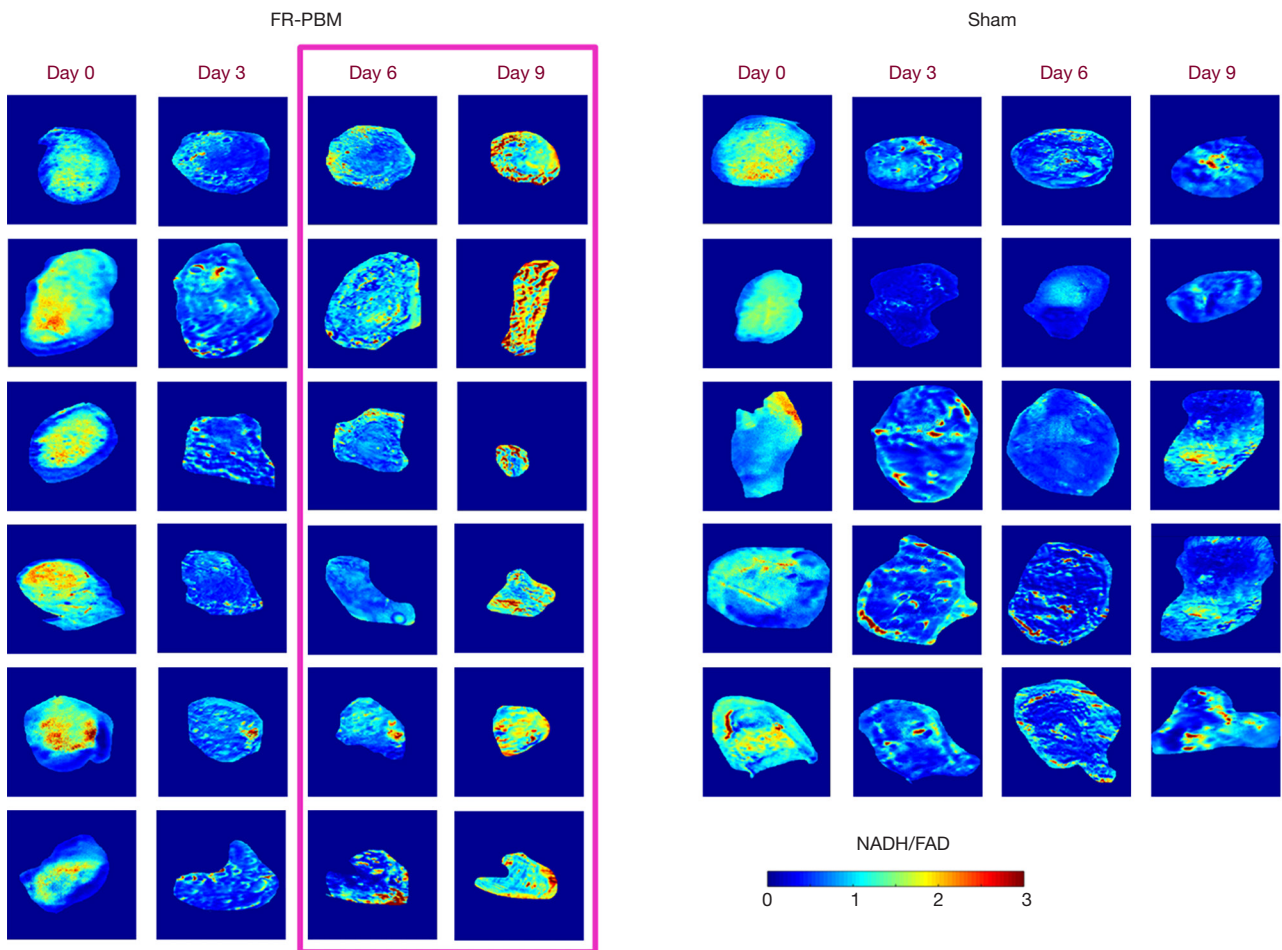


Figure S1 Surface redox ratio images of all wounds over days.

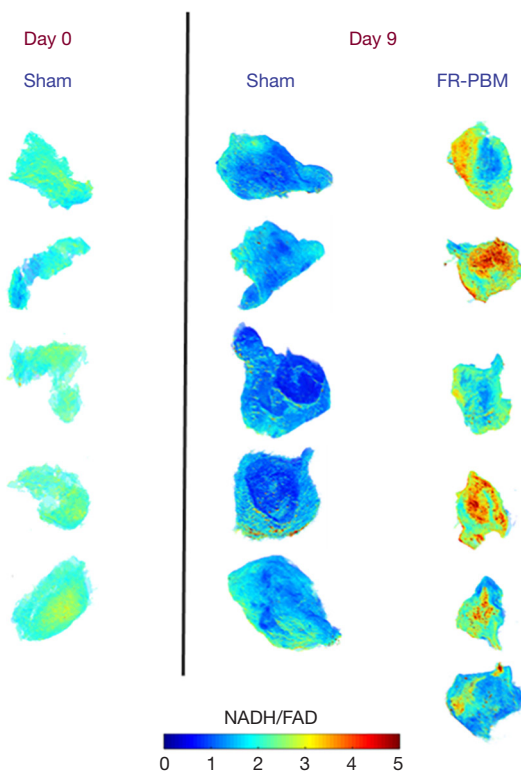


Figure S2 Volumetric redox ratio images of all wounds at days 0 and 9 of post-wounding.