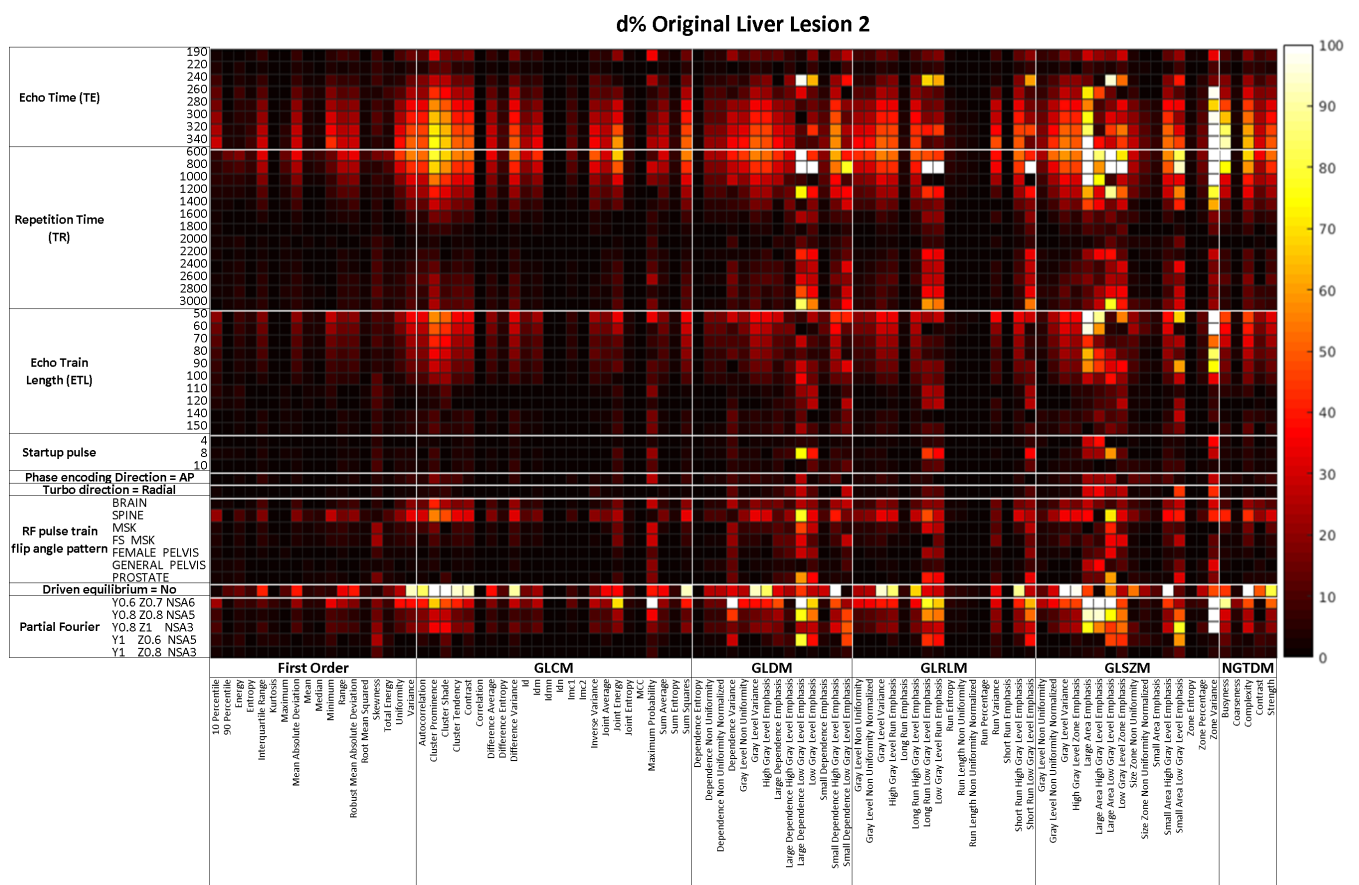
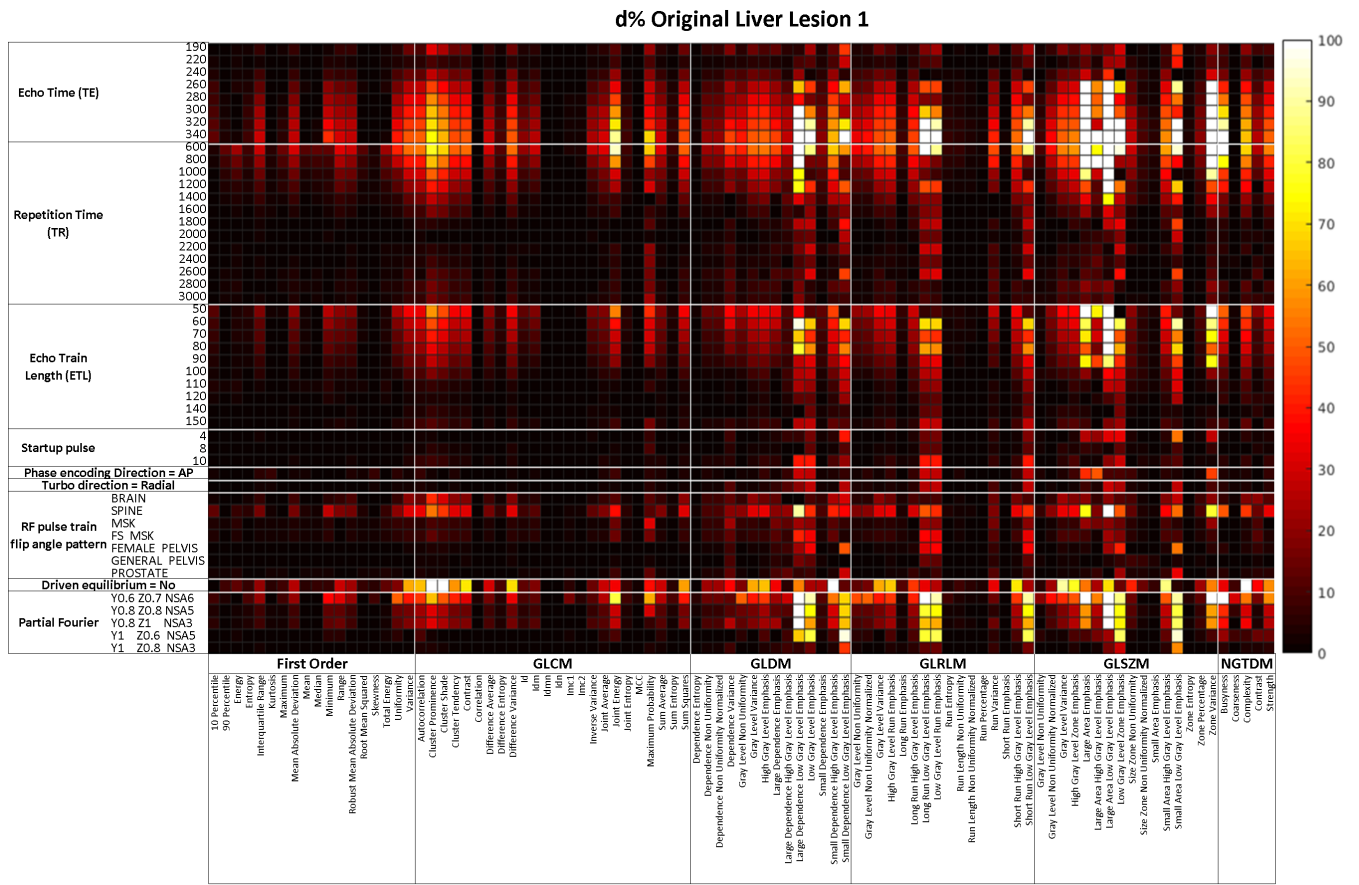
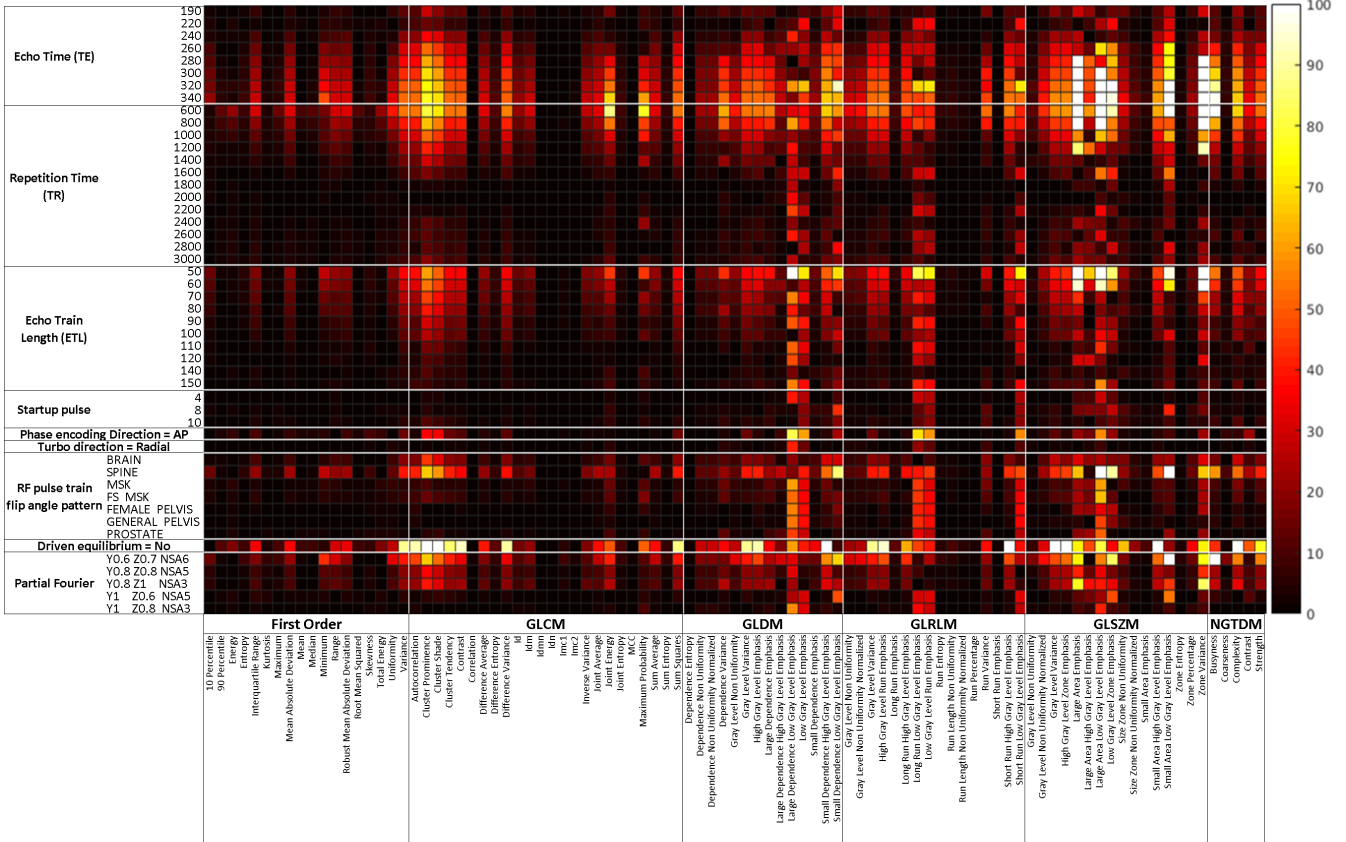


Figure S1 The heatmaps showing the percent deviation $d\%$ of the radiomics feature values in the original images in each individual VOIs under each imaging parameter setting from the corresponding baseline feature values.



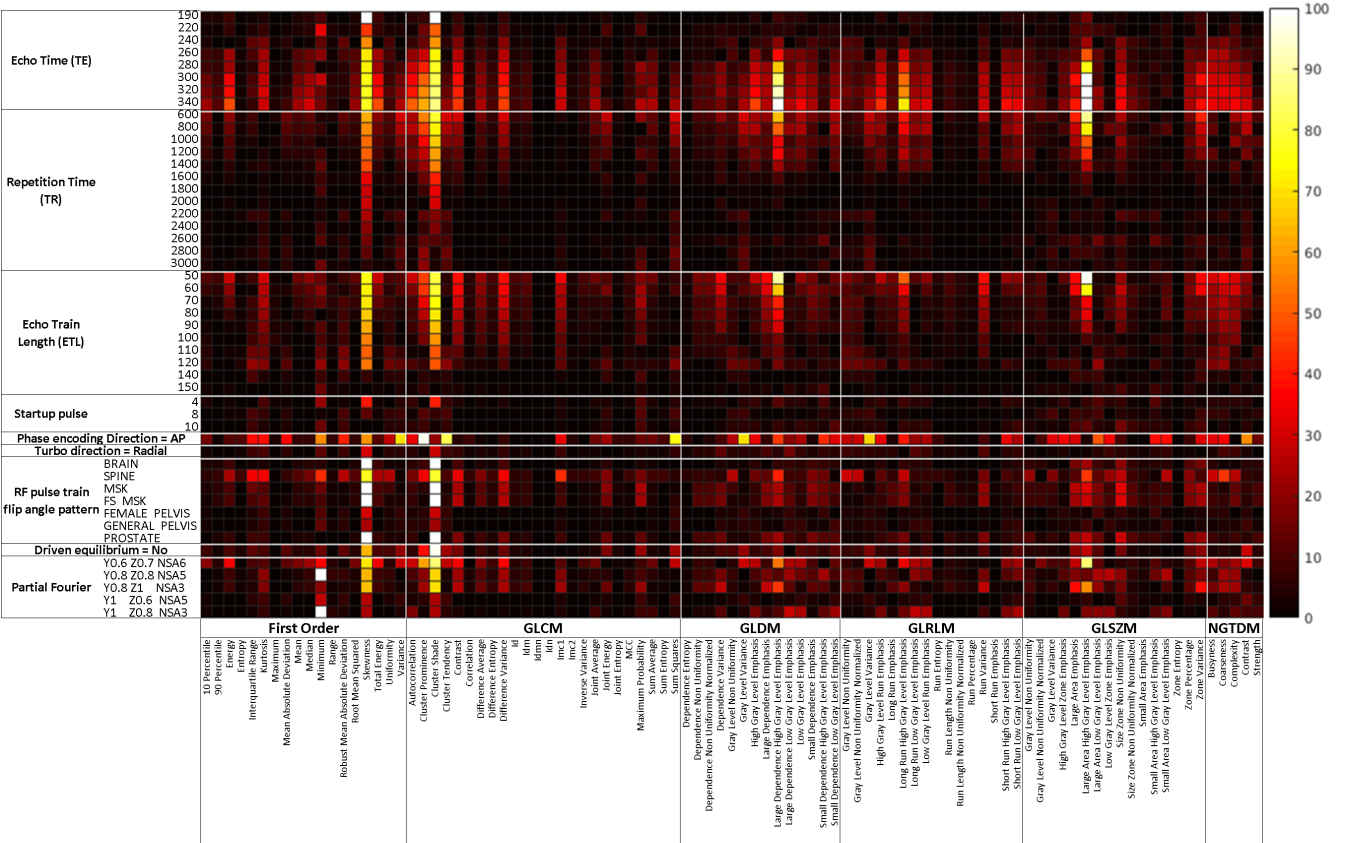
d% Original Liver Lesion 3



Radiomics Features

(c)

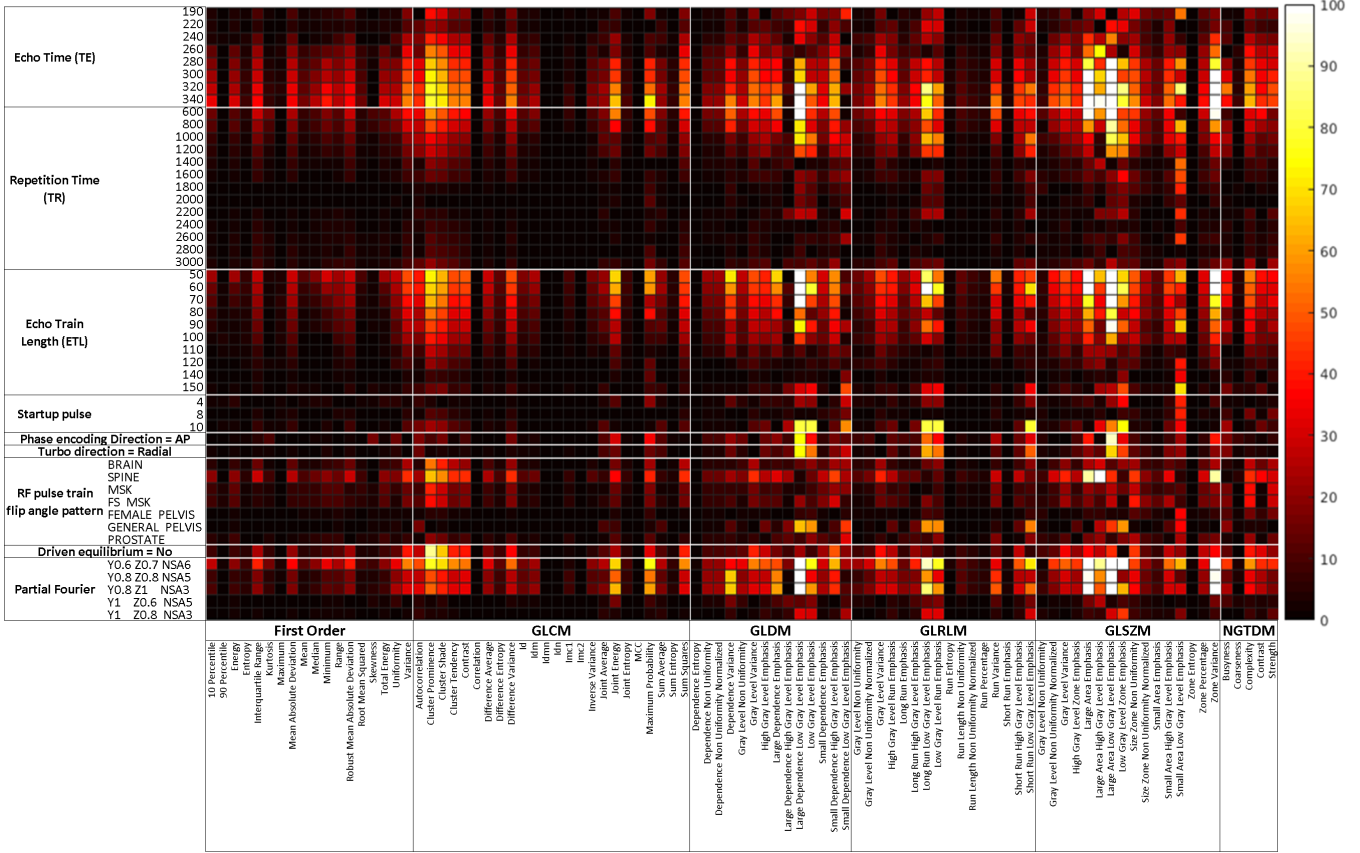
d% Original Aorta



Radiomics Features

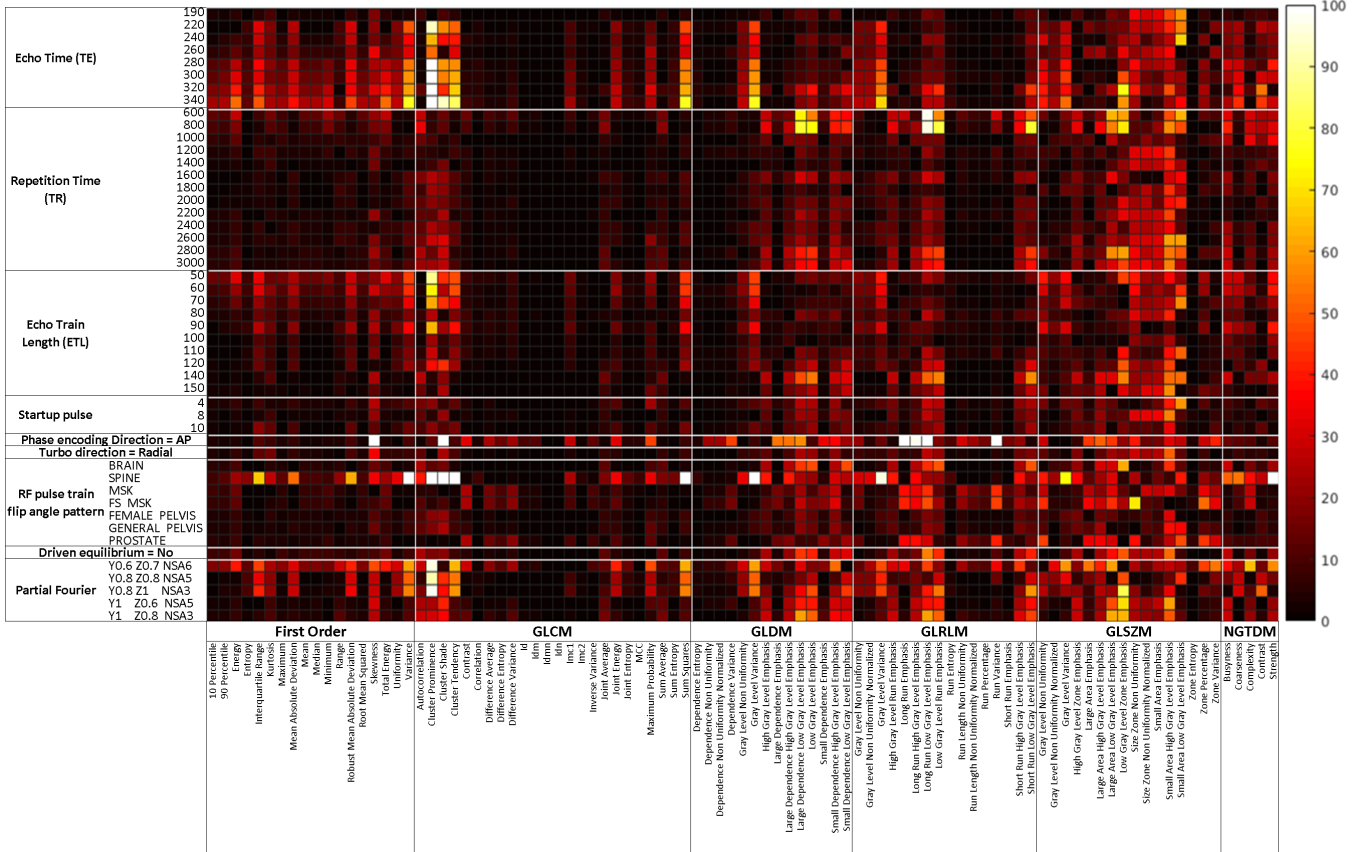
(d)

d% Original Venacava



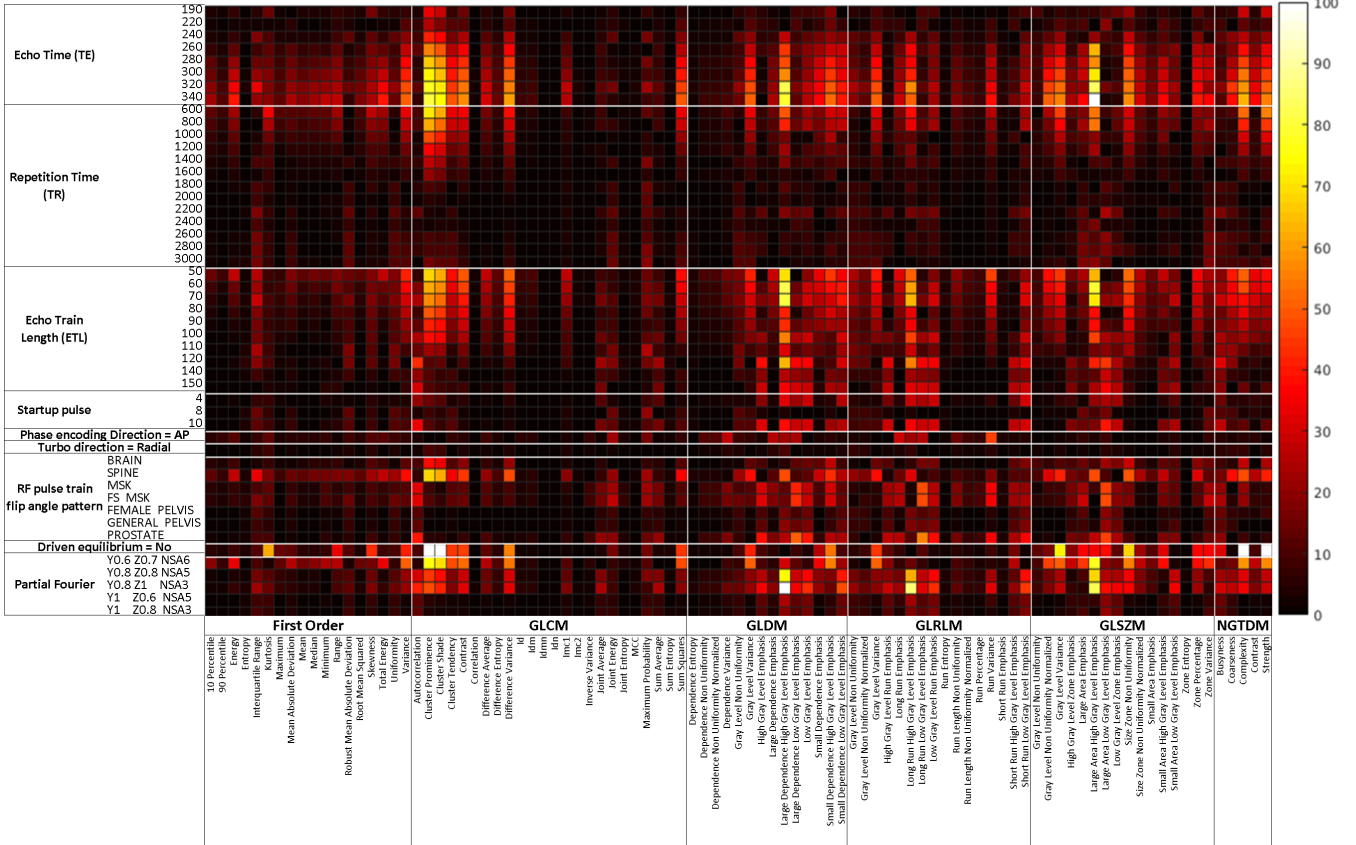
Radiomics Features (e)

d% Original Liver



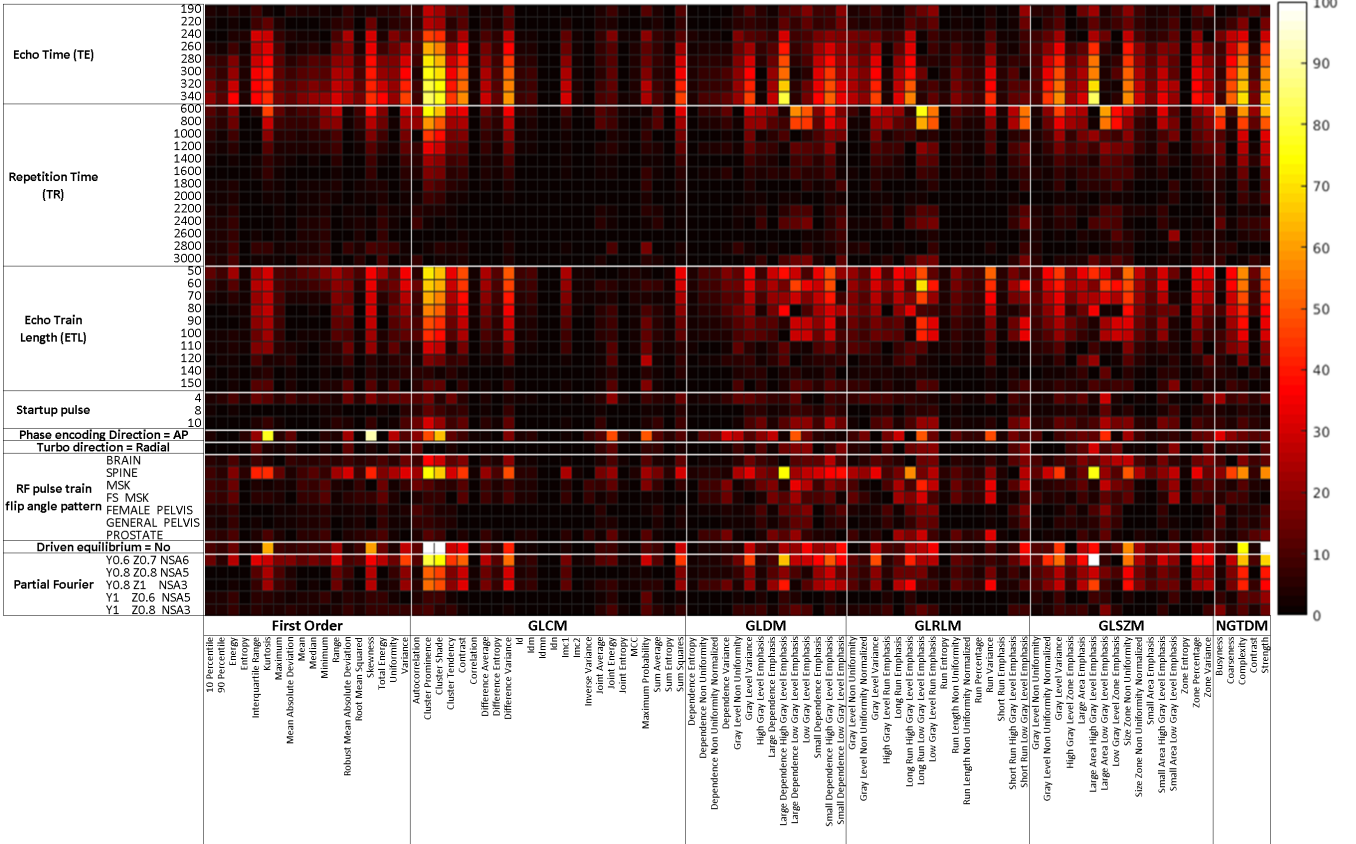
Radiomics Features (f)

d% Original Left Kidney



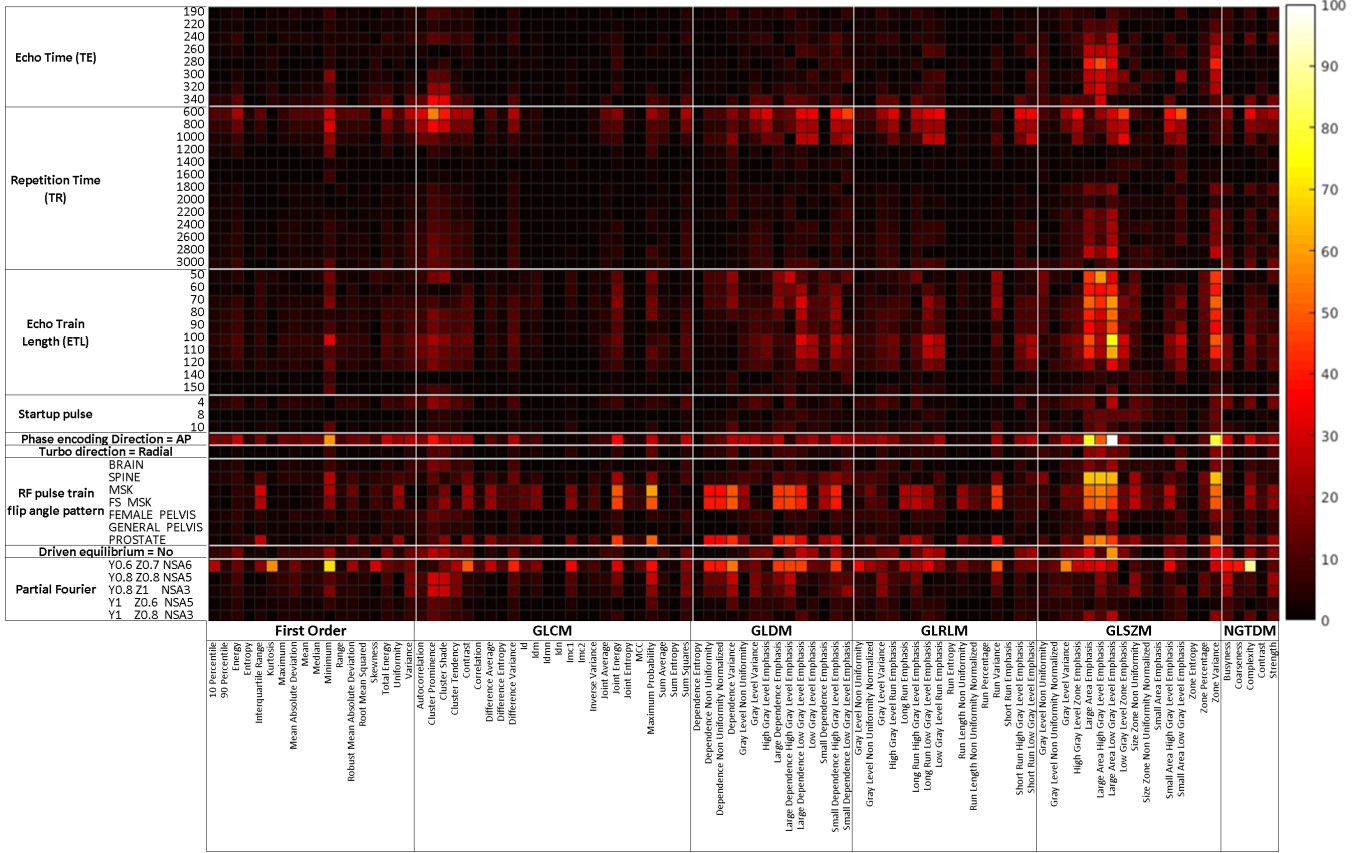
Radiomics Features (g)

d% Original Right Kidney



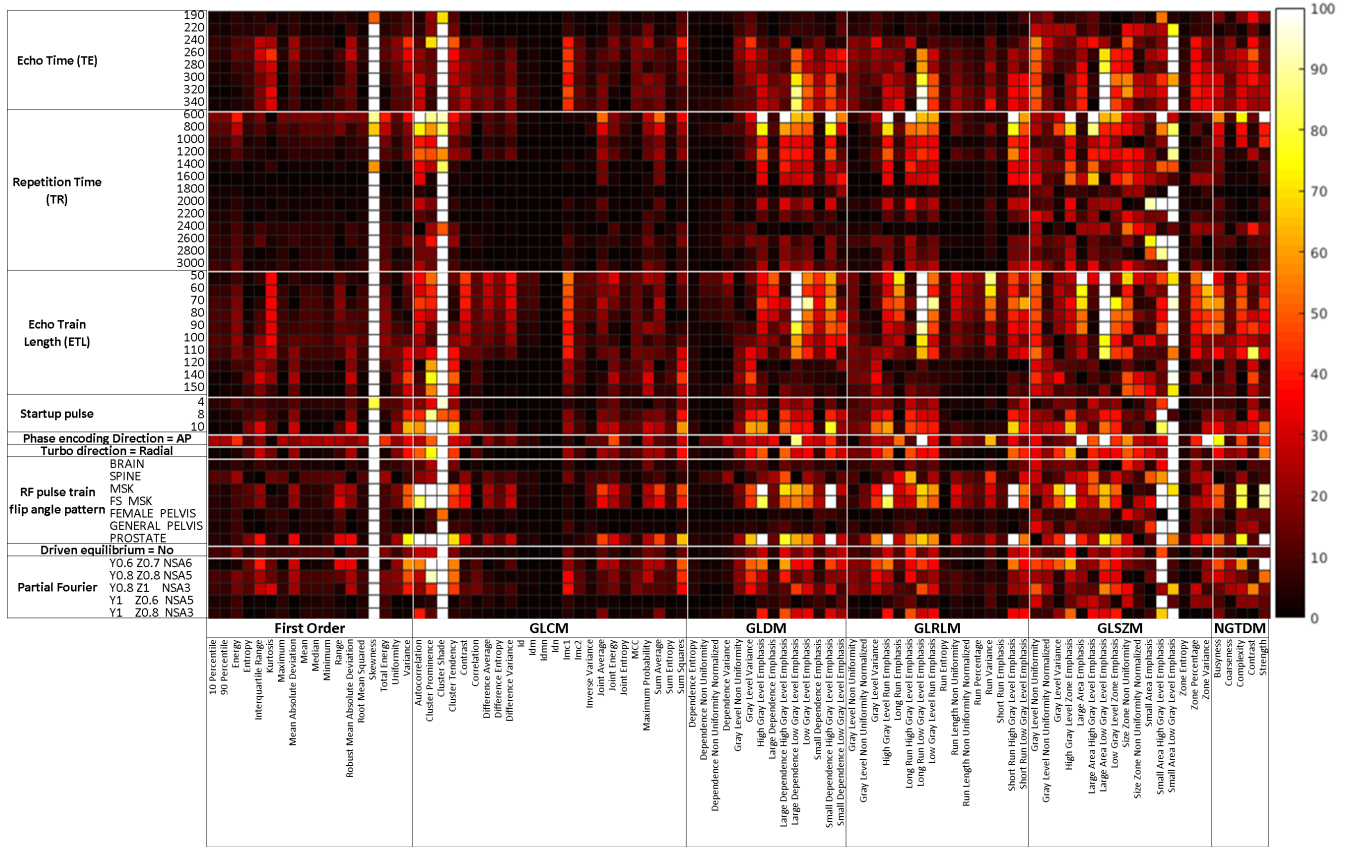
Radiomics Features (h)

d% Original Cord



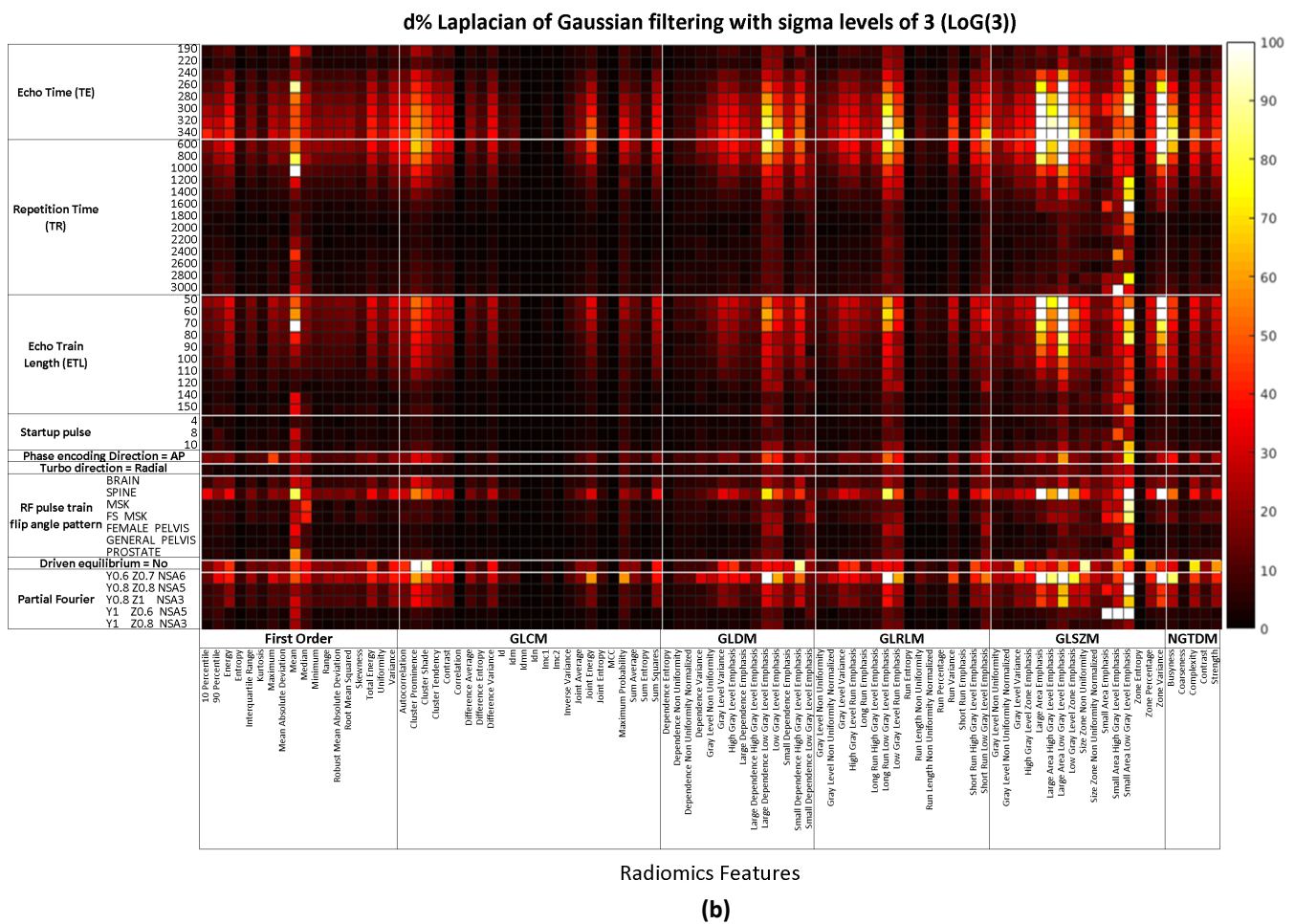
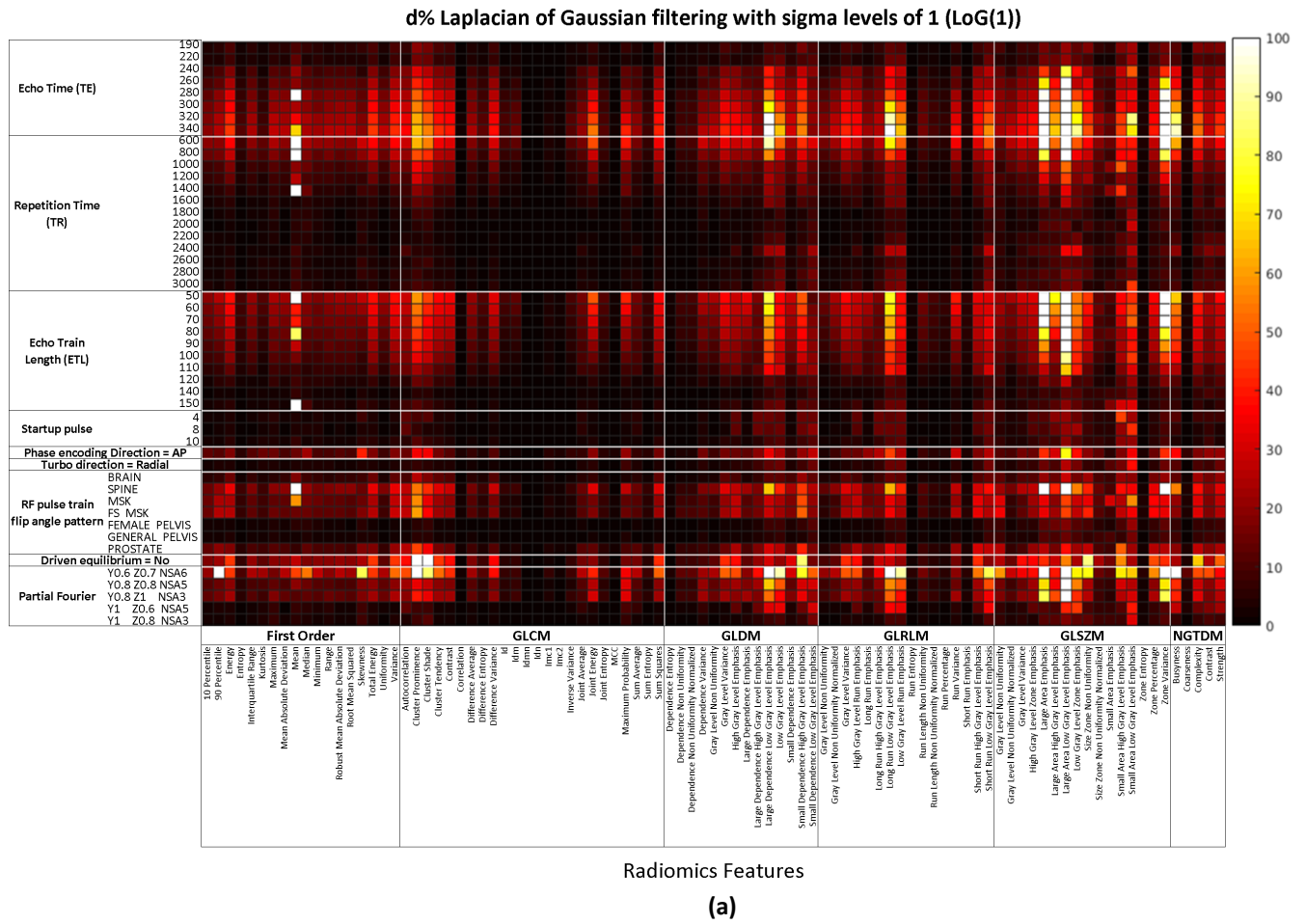
Radiomics Features
(i)

d% Original Muscle

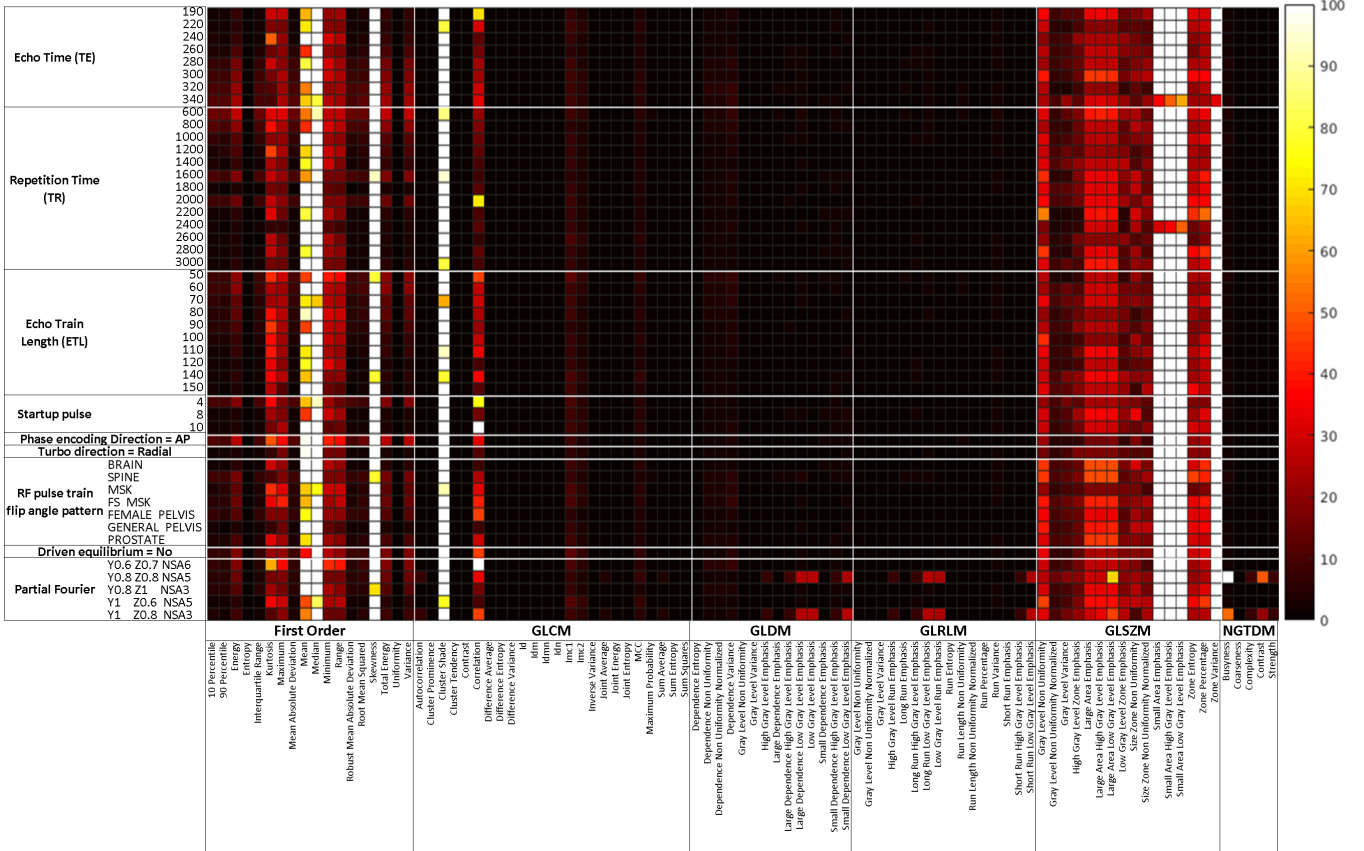


Radiomics Features
(j)

Figure S2 The heatmaps showing the percent deviation $d\%$ of the radiomics feature values in the transformed images averaged in all ten VOIs under each imaging parameter setting from the corresponding baseline feature values.

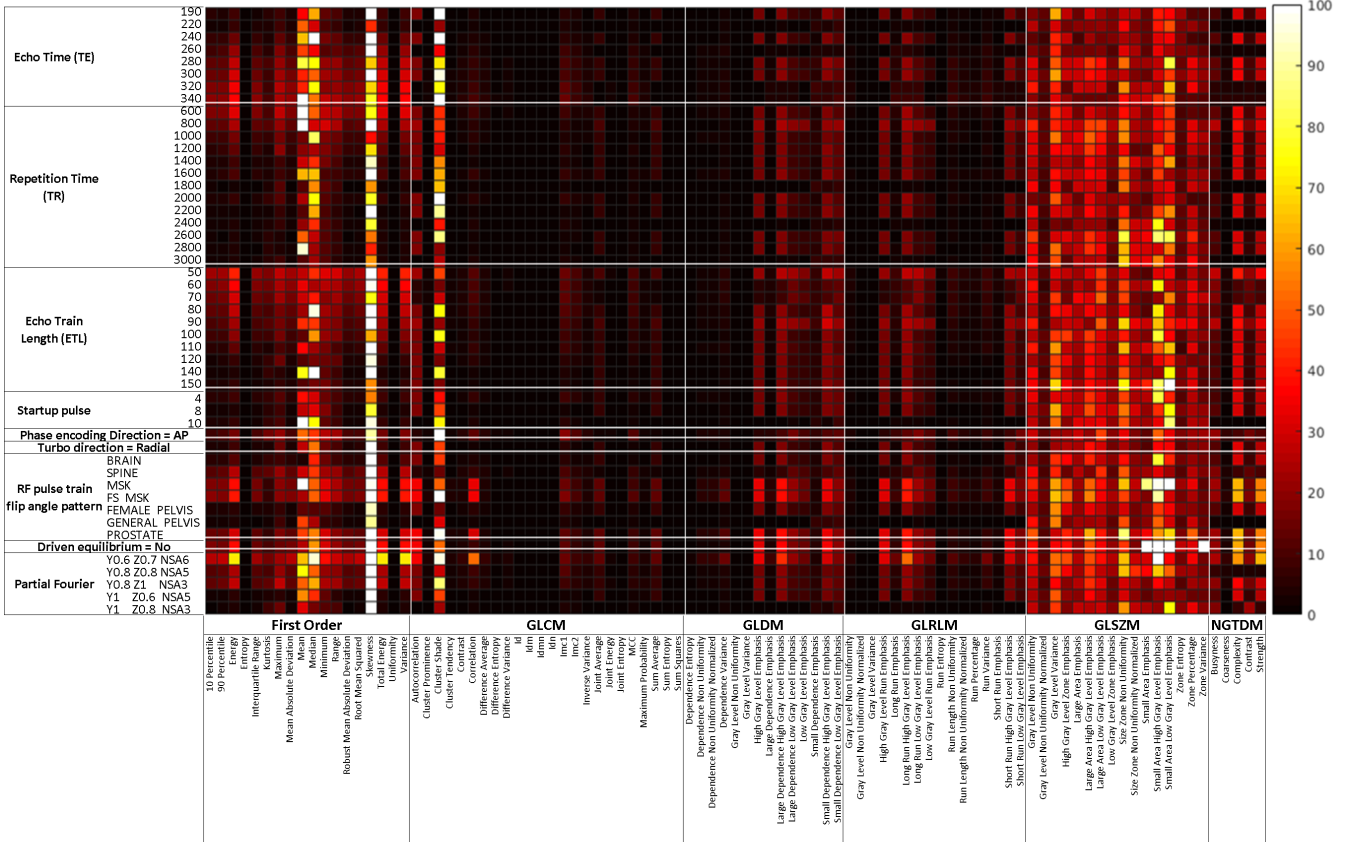


d% Wavelet HHH



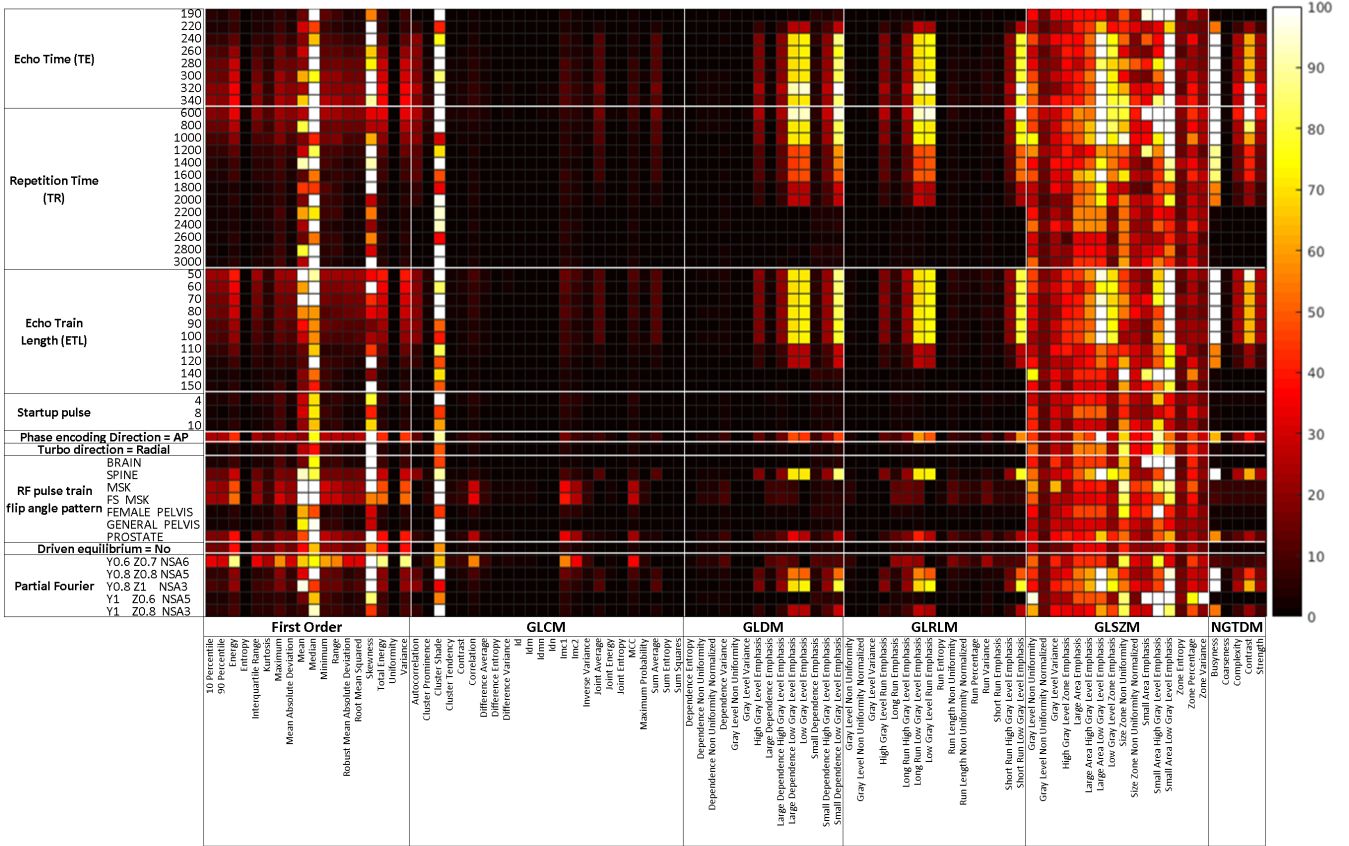
Radiomics Features (c)

d% Wavelet HHL



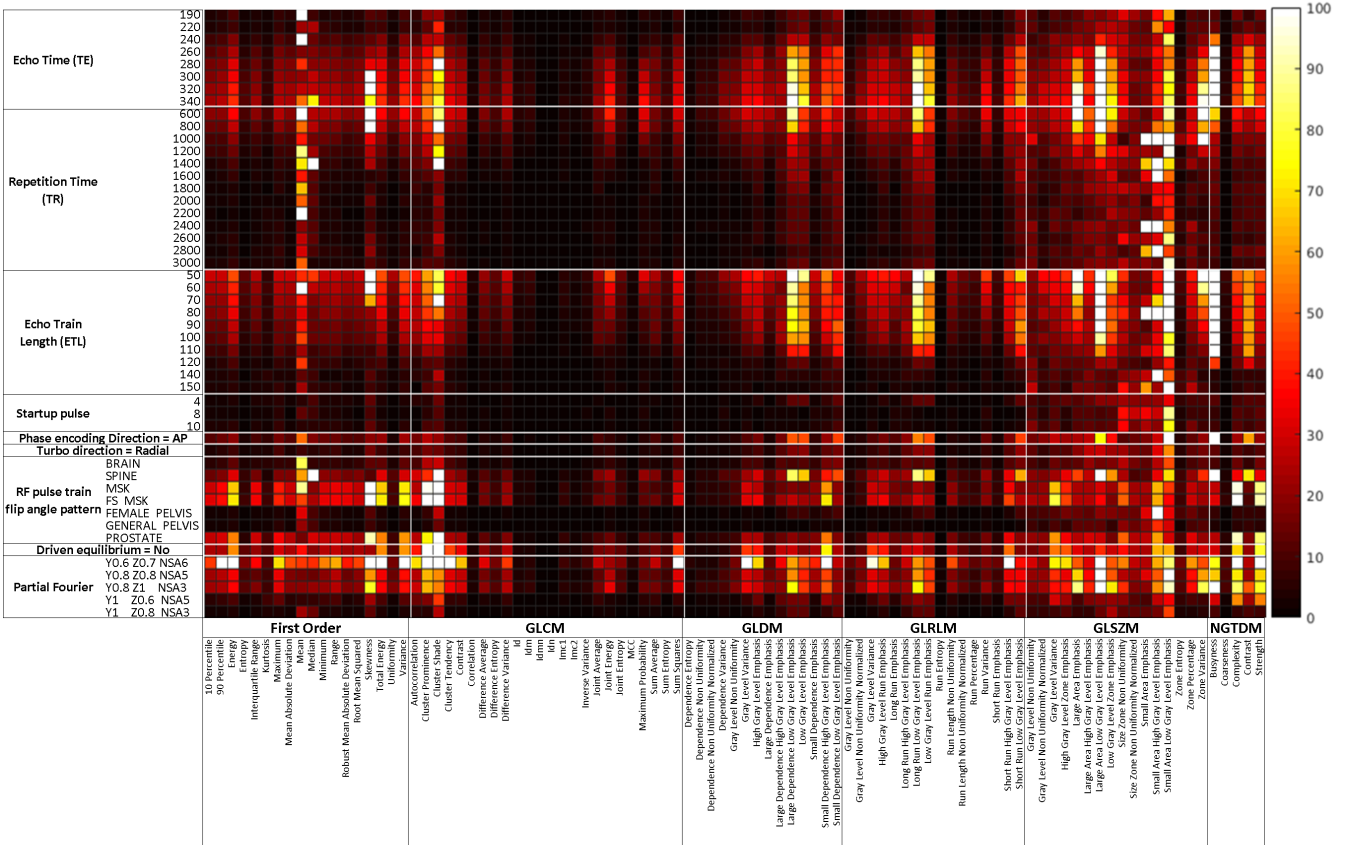
Radiomics Features (d)

d% Wavelet HLH



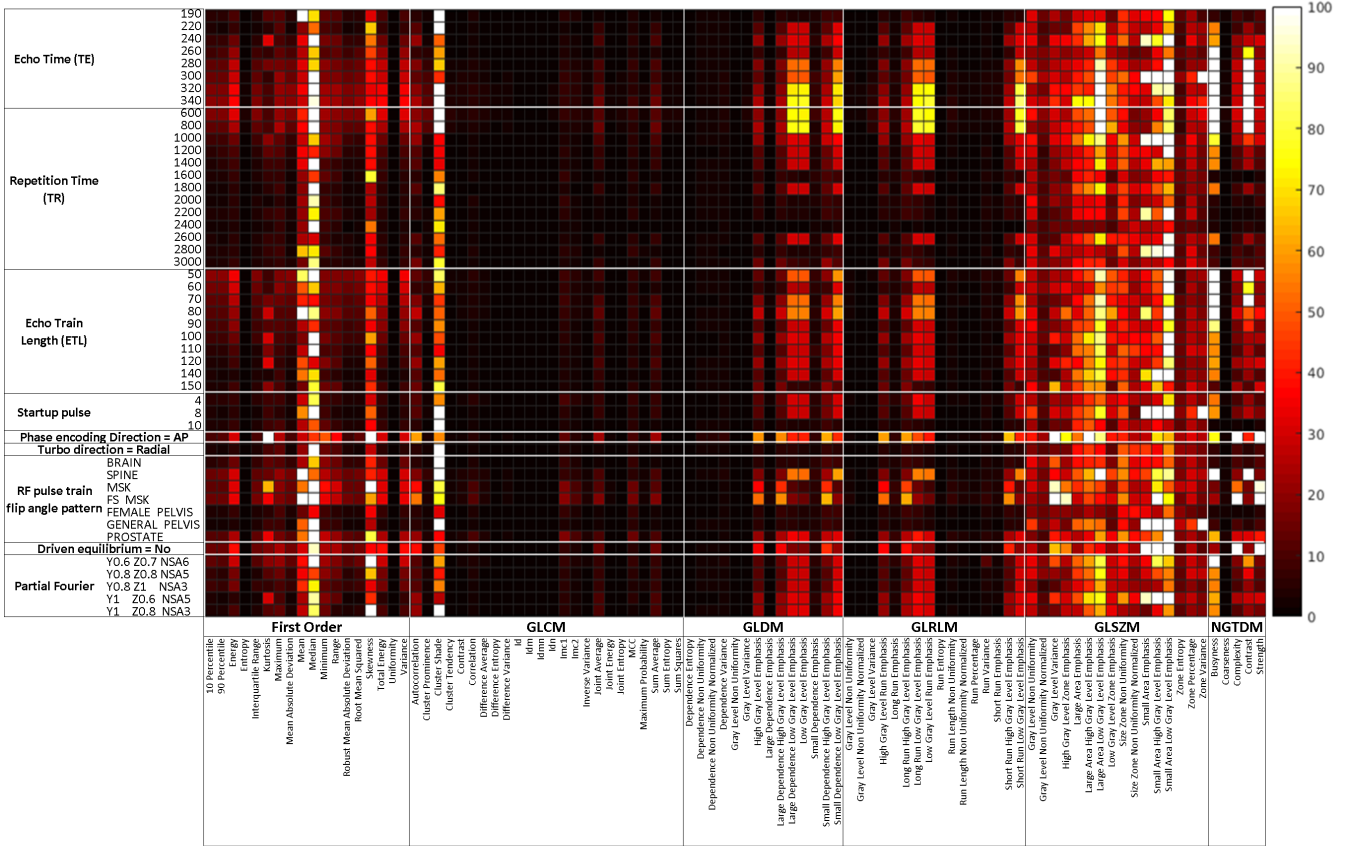
Radiomics Features
(e)

d% wavelet HLL



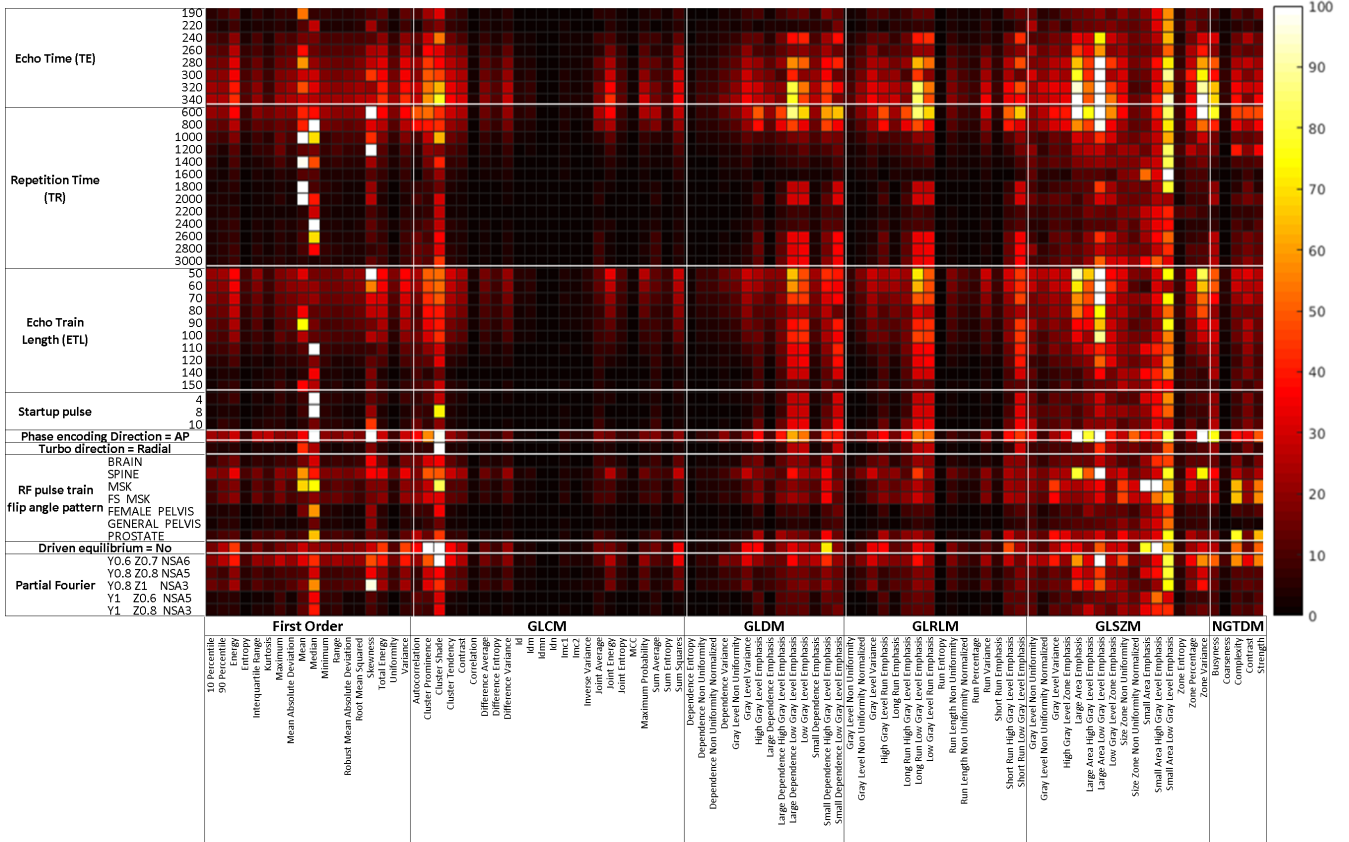
Radiomics Features
(f)

d% Wavelet LHH



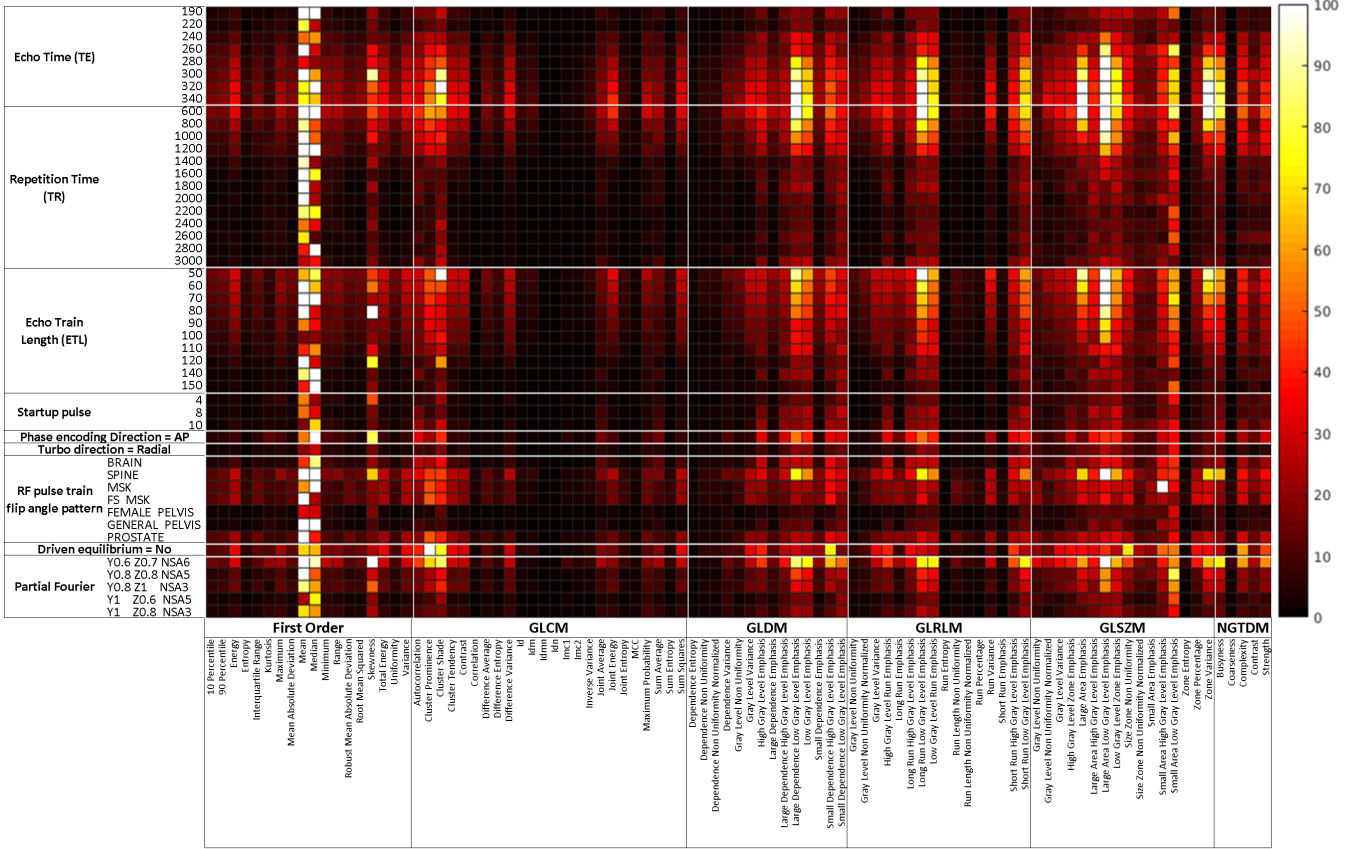
Radiomics Features
(g)

d% Wavelet LHL



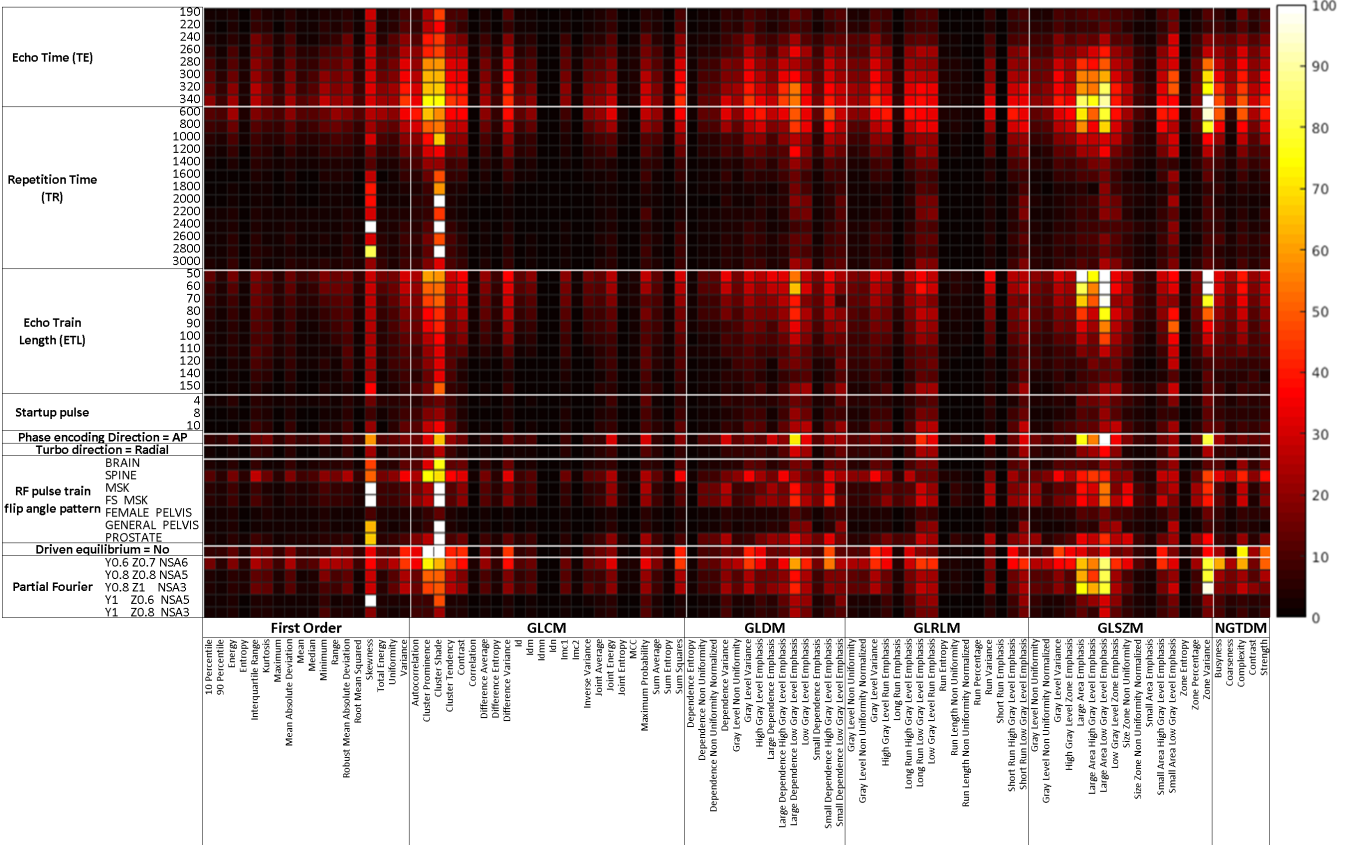
Radiomics Features
(h)

d% Wavelet LLH



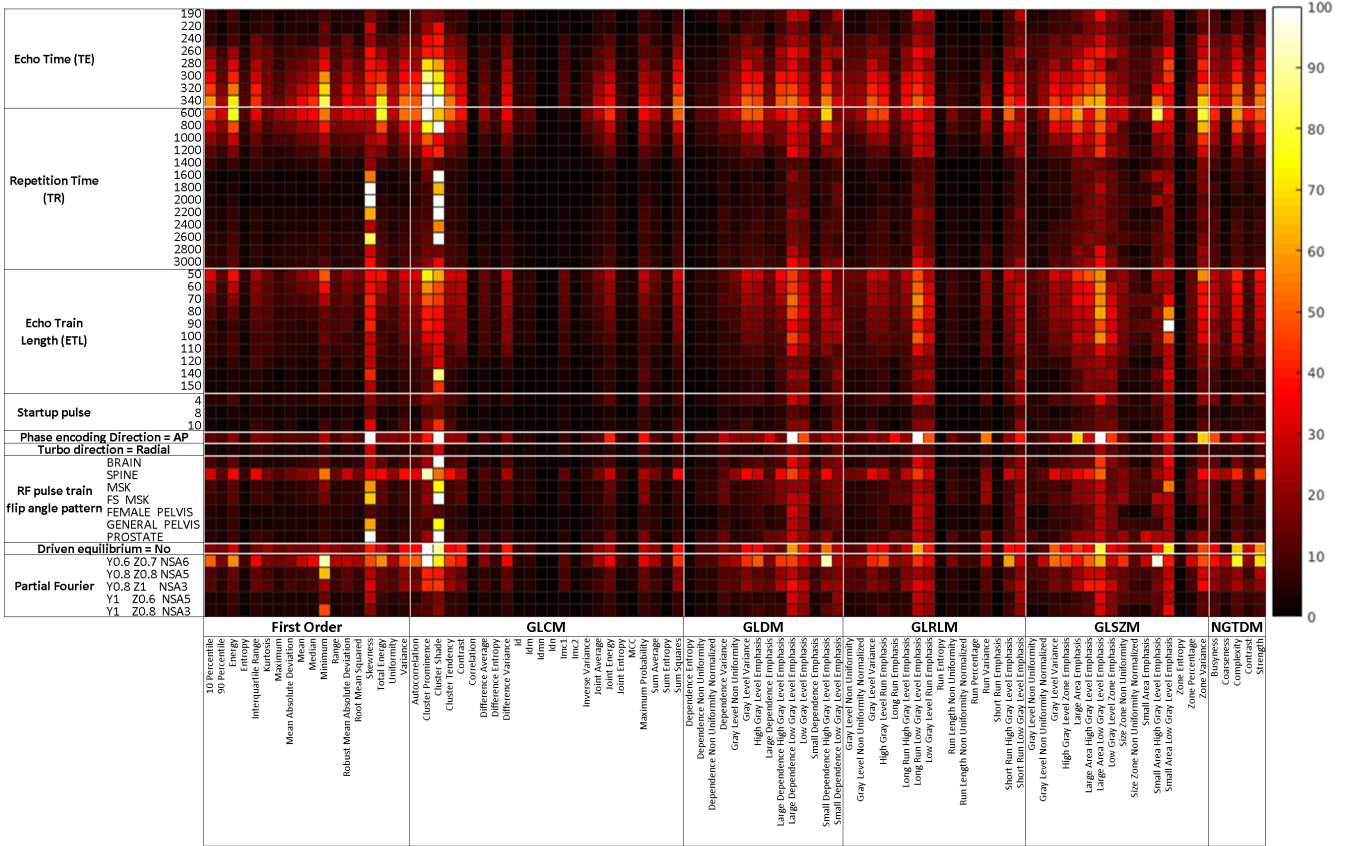
Radiomics Features
(i)

d% wavelet LLL



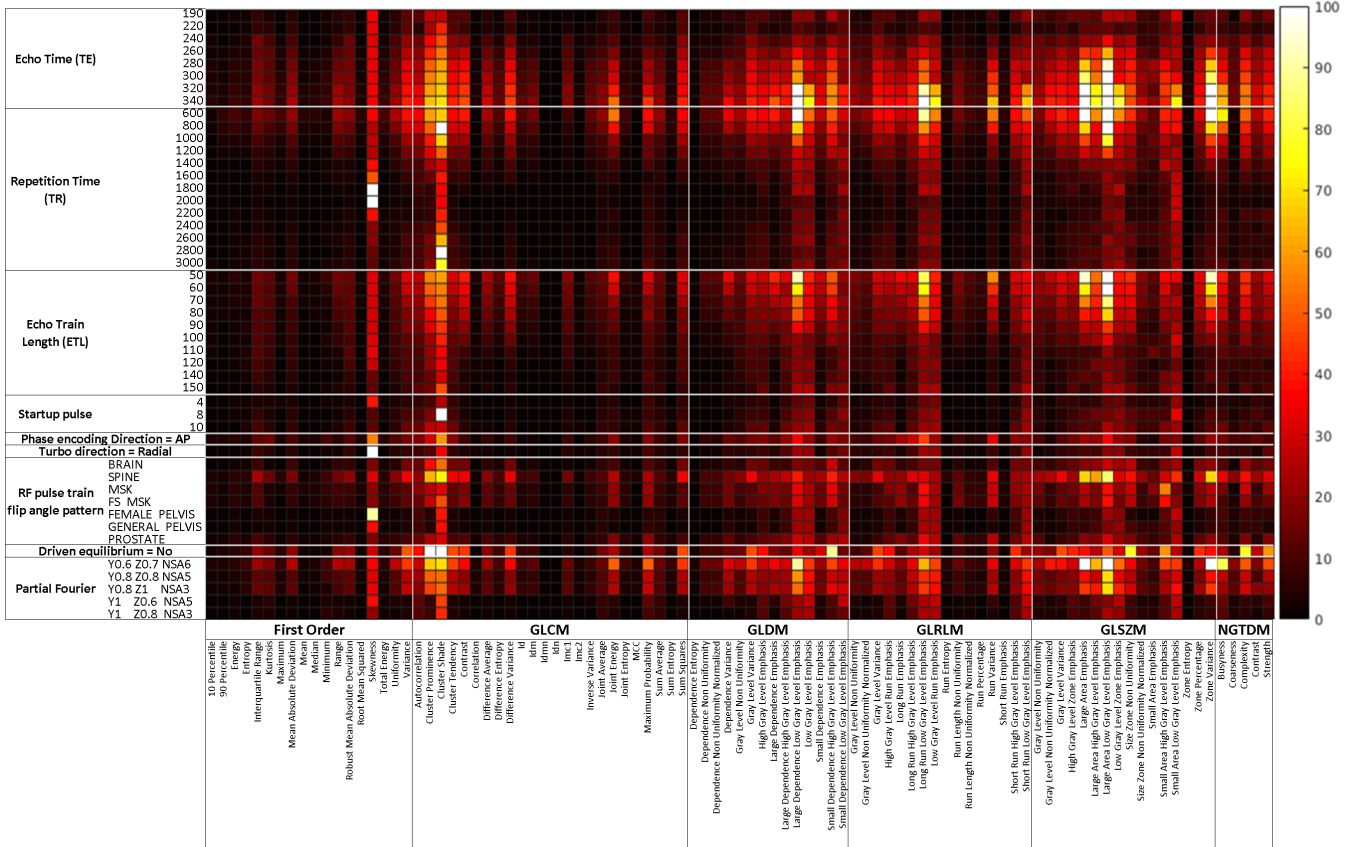
Radiomics Features
(j)

d% Square



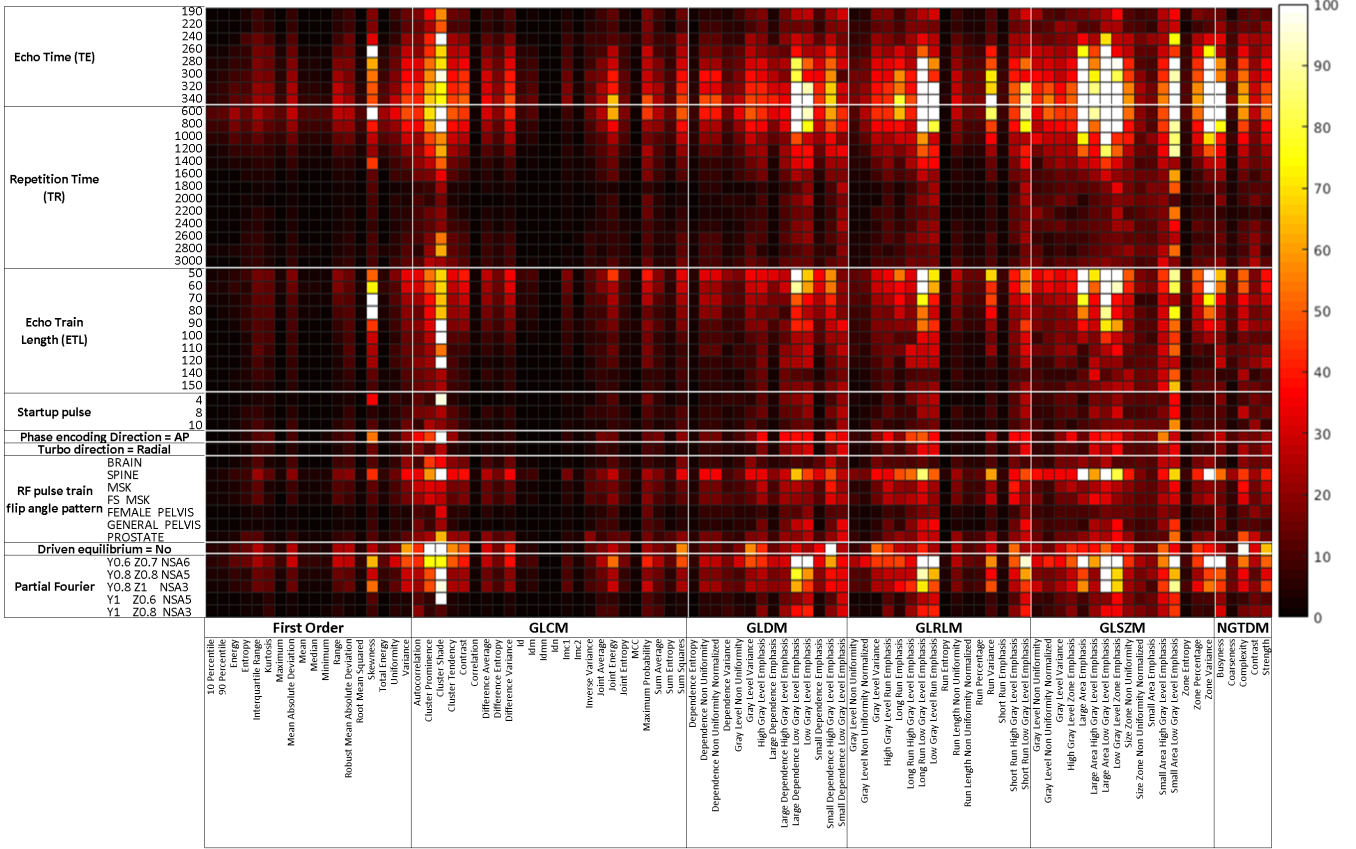
Radiomics Features
(k)

d% Squareroot



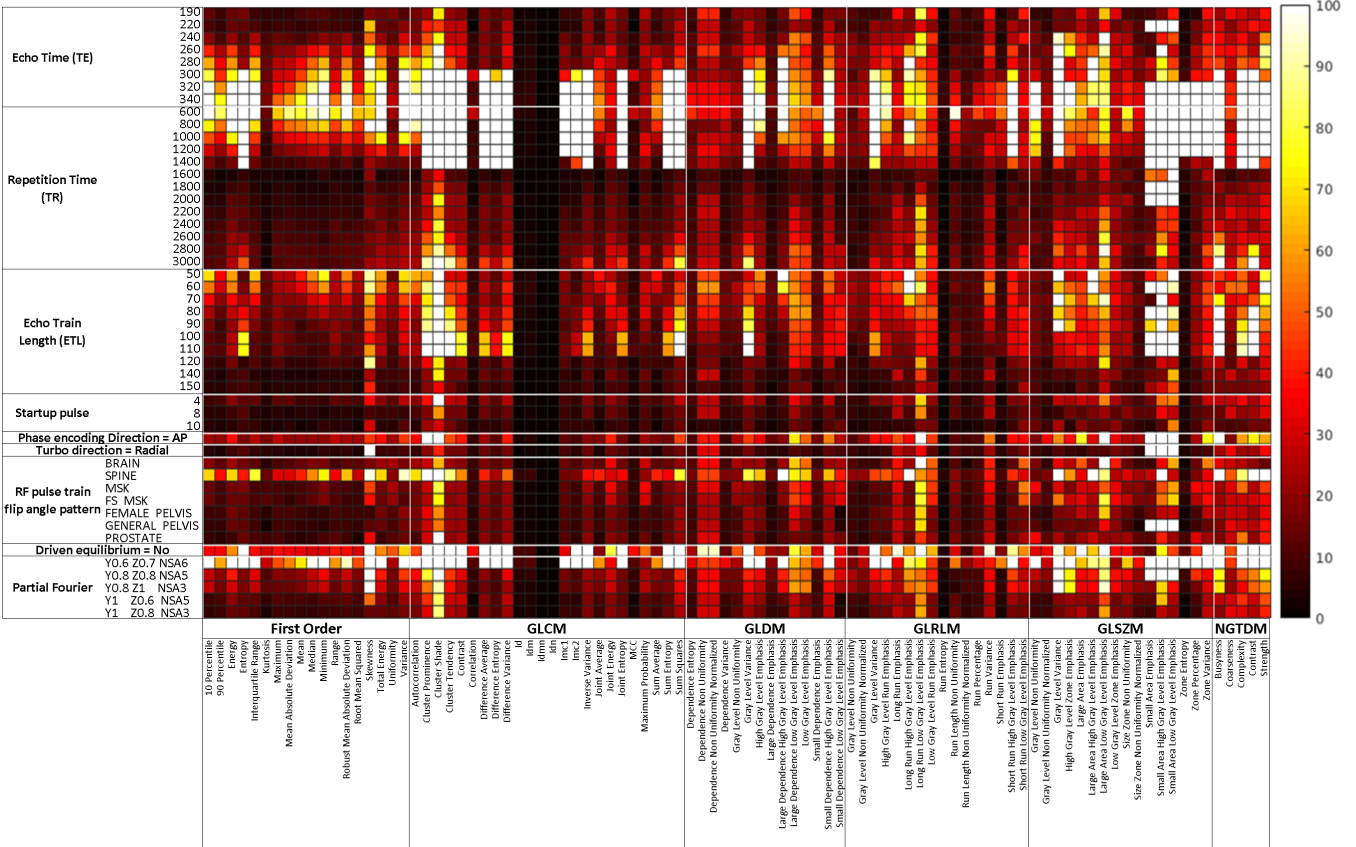
Radiomics Features
(l)

d% logarithm



Radiomics Features (m)

d% exponential



Radiomics Features (n)