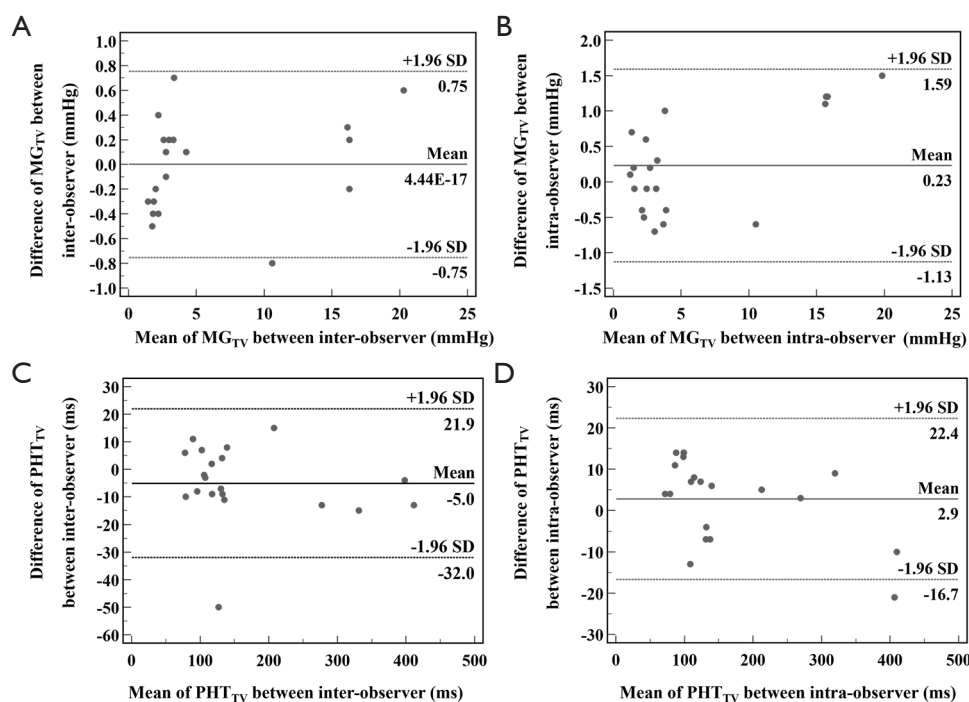


**Table S1** Inter-observer and intra-observer reliability for  $MG_{TV}$  and  $PHT_{TV}$  measurements

Measurement reliability	Variable	ICC (95% CI)
Inter-observer	$MG_{TV}$	0.998 (0.995, 0.999)
	$PHT_{TV}$	0.991 (0.978, 0.997)
Intra-observer	$MG_{TV}$	0.993 (0.983, 0.997)
	$PHT_{TV}$	0.996 (0.989, 0.998)

ICC, intraclass correlation coefficient; CI, confidence interval;  $MG_{TV}$ , mean gradient of the mechanical prosthetic tricuspid valve;  $PHT_{TV}$ , pressure half-time of the mechanical prosthetic tricuspid valve.



**Figure S1** Bland-Altman plots show the consistency analysis of intra-observer and inter-observer  $MG_{TV}$  and  $PHT_{TV}$  measurements. (A,B) show the Bland-Altman plots for inter-observer and intra-observer variability in the measurement of  $MG_{TV}$ , (C,D) for inter-observer and intra-observer variability in the measurement of  $PHT_{TV}$ . The middle solid line represents the mean difference line, the dashed lines represent the upper lower 95% confidence limits, the more data between the two dashed lines, the better the consistency.  $PHT_{TV}$ , pressure half-time of the mechanical prosthetic tricuspid valve;  $MG_{TV}$ , mean gradient of the mechanical prosthetic tricuspid valve.